

\$625,990 - 5226 Castleton Ave, Nampa

MLS® #98964565

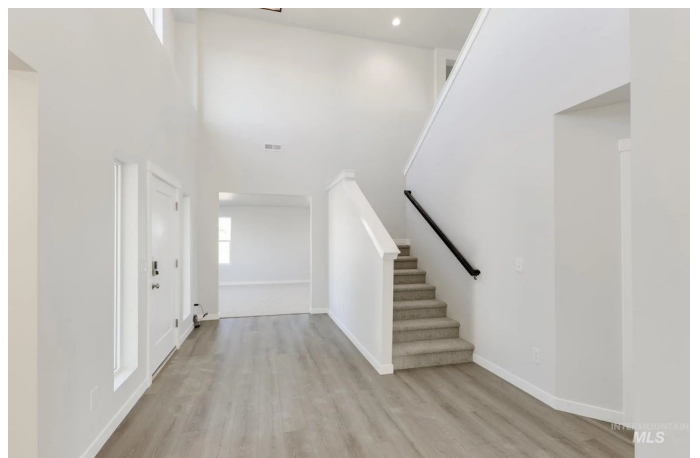
\$625,990

4 Bedroom, 3.00 Bathroom, 3,250 sqft

Residential on 0.28 Acres

Jacks Place, Nampa, ID

Fall in Love with Low Rates! Promotional rate as low as 2.99%. Enter into a brand new home in Nampa, Idaho and enjoy its benefits and stress free living! Prepare yourself for modern splendor in the Milano 3250. Breeze through the 2-story vaulted entryway to discover the grandeur that awaits inside. The floor plan flows seamlessly through the main level and sweeps past the formal dining room, spacious kitchen and living room, and an additional gathering room. The kitchen comes with stainless steel appliances and stylish solid surface countertops, adding both functionality and aesthetics to the kitchen. A main level bedroom and adjacent full bath offer a perfect guest suite or an office space. Head upstairs to find a central loft flooded with natural light and 3 additional bedrooms. Double doors lead you into the primary suite, where the larger than life primary suite and oversized en suite bathroom guarantee a luxurious oasis of relaxation. The primary suite features a walk-in shower & separate soaker tub! Potential RV parking available. Photos are similar. All selections are subject to change without notice, please call to verify.



Built in 2025

Essential Information

MLS® # 98964565

Price Per SQFT \$193

Bedrooms	4
Bathrooms	3.00
Square Footage	3,250
Acres	0.28
Year Built	2025
Type	Residential
Sub-Type	Single Family Residence
Status	New

Community Information

Address	5226 Castleton Ave
Area	Nampa South (86) - 1260
Subdivision	Jacks Place
City	Nampa
County	Canyon
State	ID
Zip Code	83686
Builder	CBH Homes

Amenities

Utilities	Sewer Connected
Parking Spaces	3
Parking	Attached
# of Garages	3
Golf Course	N
Virtual Tour	https://my.matterport.com/show/?m=DMnWotdDkeH&mls=1

Interior

Interior Features	Bath-Master, Bed-Master Main Level, Great Room, Double Vanity, Breakfast Bar, Pantry, Kitchen Island, Solid Surface Counters
Appliances	Gas Water Heater, Dishwasher, Disposal, Microwave, Oven/Range Freestanding
Heating	Forced Air, Natural Gas
Cooling	Central Air
Fireplace	Yes
Fireplaces	One, Gas, Insert
Stories	Two

Exterior

Lot Description	10000 SF - .49 AC, Sidewalks, Pressurized Irrigation Sprinkler System
Roof	Composition

School Information

District	Nampa School District #131
Elementary	Lake Ridge
Middle	South Middle (Nampa)
High	Skyview

Additional Information

Date Listed	October 13th, 2025
HOA Fees	\$600
HOA Fees Freq.	Annually
New Construction	Yes
Tax Year	2025
Office	CBH Sales & Marketing Inc
Contact Info	tarak@cbhhomes.com

Listing Details

Listing Office	CBH Sales & Marketing Inc
----------------	---------------------------



IDX information is provided exclusively for consumers' personal, non-commercial use, and may not be used for any purpose other than to identify prospective properties consumers may be interested in purchasing. IMLS does not assume any liability for missing or inaccurate data. Information provided by IMLS is deemed reliable but not guaranteed.

Listing information last updated on October 14th, 2025 at 10:33am MDT