

\$464,800 - 249 W Broyhill St., Meridian

MLS® #98964559

\$464,800

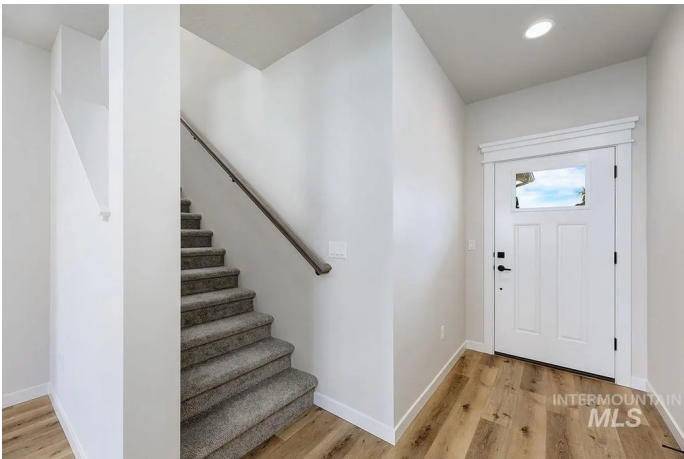
4 Bedroom, 3.00 Bathroom, 1,970 sqft
Residential on 0.08 Acres

Stapleton, Meridian, ID

The TUCSON MODEL| Blackrock Homes.
FINAL PHASE!! SELF GUIDED TOUR HOME
(instructions onsite). Close to community park
featuring basketball hoop, play ground,
climbing wall & open space + TWO Private
Dog Parks! Adjacent to future REGIONAL
WALKING PATH. All upgrades included as
standards-All quartz countertops (No cheap
laminate), hardwood (lvp), full overlay cabinet
doors, + detailed trim work. INCLUDES FULL
VINYL FENCING W/WROUGHT IRON WING
GATE & FRONT & BACK YARD
LANDSCAPING! *Photos similar and not of
actual home. Finishes are similar. Interior
package - PEWTER package.



INTERMOUNTAIN
BLACKROCK
HOMES



Built in 2025

Essential Information

MLS® #	98964559
Price Per SQFT	\$236
Bedrooms	4
Bathrooms	3.00
Square Footage	1,970
Acres	0.08
Year Built	2025
Type	Residential
Sub-Type	Single Family Residence
Status	New

Community Information

Address	249 W Broyhill St.
Area	Meridian SW - 1010
Subdivision	Stapleton
City	Meridian
County	Ada
State	ID
Zip Code	83642
Builder	Blackrock Homes

Amenities

Utilities	Sewer Connected, Cable Connected
Parking Spaces	2
Parking	Attached, Finished Driveway
# of Garages	2
Golf Course	N

Interior

Interior Features	Bath-Master, Great Room, Double Vanity, Walk-In Closet(s), Pantry, Kitchen Island, Quartz Counters
Appliances	Electric Water Heater, Dishwasher, Disposal, Microwave, Oven/Range Freestanding, Gas Range
Heating	Forced Air, Natural Gas
Cooling	Central Air
Stories	Two

Exterior

Lot Description	Sm Lot 5999 SF, Sidewalks, Auto Sprinkler System, Drip Sprinkler System, Full Sprinkler System, Pressurized Irrigation Sprinkler System
Roof	Composition
Foundation	Slab

School Information

District	West Ada School District
Elementary	Mary McPherson
Middle	Victory
High	Meridian

Additional Information

Date Listed	October 13th, 2025
HOA Fees	\$660

HOA Fees Freq.	Annually
New Construction	Yes
Tax Year	2025
Office	O2 Real Estate Group
Contact Info	patm@o2marketinggroup.com

Listing Details

Listing Office	O2 Real Estate Group
----------------	----------------------



IDX information is provided exclusively for consumers' personal, non-commercial use, and may not be used for any purpose other than to identify prospective properties consumers may be interested in purchasing. IMLS does not assume any liability for missing or inaccurate data. Information provided by IMLS is deemed reliable but not guaranteed.

Listing information last updated on October 14th, 2025 at 7:33pm MDT