

\$457,990 - 4170 E Hillsong St, Meridian

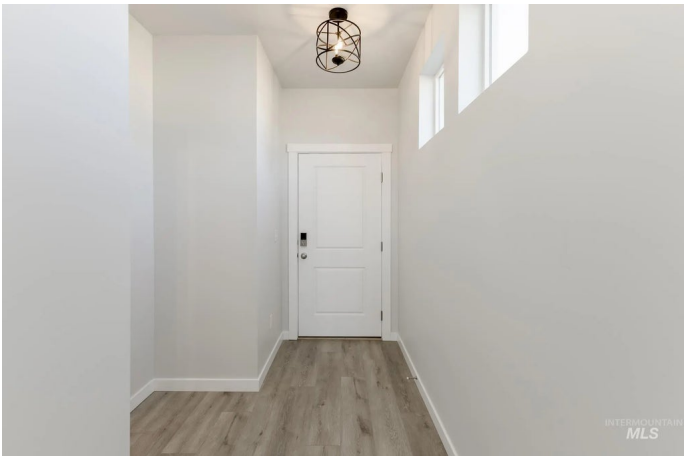
MLS® #98964551

\$457,990

3 Bedroom, 3.00 Bathroom, 1,678 sqft
Residential on 0.08 Acres

Centerville, Meridian, ID

Fall in Love with Low Rates! Promotional rate as low as 2.99%. Embrace the comforts of a brand new home in Meridian, Idaho. Gather round and let the designer in you come to life in this delightful floor plan – the Berlin 1678. The open main floor allows for large gatherings, endless entertainment, and room for any activity. The kitchen boasts upgraded finishes, including stainless steel appliances, a gas range, and stylish solid surface countertops. Wander upstairs and be mesmerized by a loft area perfect for homework, a library, or daydreaming. The flexibility of this space provides endless possibilities for customization. The primary suite is complete with a walk-in closet and an en suite bathroom fit for rest and relaxation, featuring a dual vanity. Two additional bedrooms provide space for family, guests, or a home office. With thoughtful design and an abundance of living space, the Berlin offers a home that truly adapts to your lifestyle. Photos are similar. All selections are subject to change without notice, please call to verify.



Built in 2025

Essential Information

MLS® #	98964551
Price Per SQFT	\$273
Bedrooms	3
Bathrooms	3.00

Square Footage	1,678
Acres	0.08
Year Built	2025
Type	Residential
Sub-Type	Single Family Residence
Status	New

Community Information

Address	4170 E Hillsong St
Area	Boise SW-Meridian - 0550
Subdivision	Centerville
City	Meridian
County	Ada
State	ID
Zip Code	83642
Builder	CBH Homes

Amenities

Utilities	Sewer Connected
Parking Spaces	2
Parking	Attached
# of Garages	2
Golf Course	N
Virtual Tour	https://my.matterport.com/show/?m=Sz2D47wAFt4&mls=1

Interior

Interior Features	Bath-Master, Double Vanity, Loft, Breakfast Bar, Pantry, Kitchen Island, Solid Surface Counters
Appliances	Gas Water Heater, Dishwasher, Disposal, Microwave, Oven/Range Freestanding, Gas Range
Heating	Forced Air, Natural Gas
Cooling	Central Air
Stories	Two

Exterior

Lot Description	Sm Lot 5999 SF, Sidewalks, Auto Sprinkler System, Partial Sprinkler System
Roof	Composition

School Information

District	West Ada School District
Elementary	Hillsdale
Middle	Lake Hazel
High	Mountain View

Additional Information

Date Listed	October 13th, 2025
HOA Fees	\$650
HOA Fees Freq.	Annually
New Construction	Yes
Tax Year	2025
Office	CBH Sales & Marketing Inc
Contact Info	tarak@cbhhomes.com

Listing Details

Listing Office	CBH Sales & Marketing Inc
----------------	---------------------------



IDX information is provided exclusively for consumers' personal, non-commercial use, and may not be used for any purpose other than to identify prospective properties consumers may be interested in purchasing. IMLS does not assume any liability for missing or inaccurate data. Information provided by IMLS is deemed reliable but not guaranteed.

Listing information last updated on October 14th, 2025 at 5:18pm MDT