

# \$459,990 - 7250 E Shields Dr, Nampa

MLS® #98964549

**\$459,990**

4 Bedroom, 3.00 Bathroom, 2,054 sqft  
Residential on 0.20 Acres

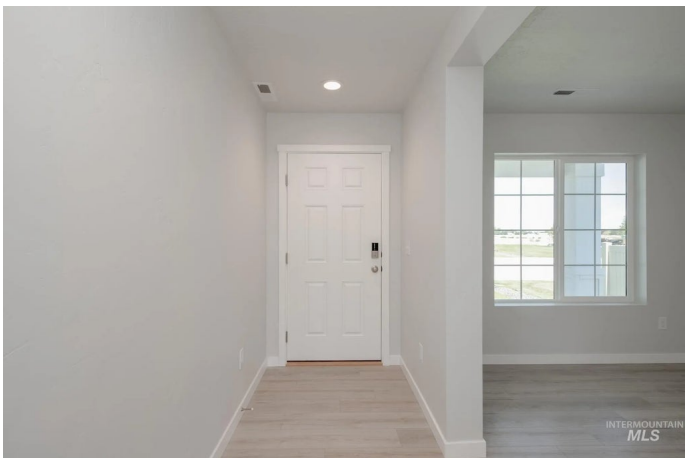
Spring Shores, Nampa, ID

Feel enriched in your brand new home located in Nampa, Idaho! Enter inside the Tatom 2054 and feel immediately welcomed. As you move toward the back of the home, you find a well-appointed kitchen complete with stainless steel appliances and stylish solid surface countertops, adding both functionality and aesthetics to the kitchen. The back yard feels like an extension of the home when it's easy to access right from the dining room. A formal living room at the front of the home and the main living room in the rear provide multiple living spaces to host guests in or relax. The upper level primary suite is accompanied by the laundry room and three additional bedrooms. The fourth bedroom offers a walk-in closet for extra clothes or storage. With its open design and abundant space, the Tatom ensures comfort and flexibility for every lifestyle. Potential RV parking available. Photos are similar. All selections are subject to change without notice, please call to verify.

Built in 2025

## Essential Information

MLS® #	98964549
Price Per SQFT	\$224
Bedrooms	4
Bathrooms	3.00
Square Footage	2,054
Acres	0.20



Year Built	2025
Type	Residential
Sub-Type	Single Family Residence
Status	New

### Community Information

Address	7250 E Shields Dr
Area	Nampa NE (87) - 1250
Subdivision	Spring Shores
City	Nampa
County	Canyon
State	ID
Zip Code	83687
Builder	CBH Homes

### Amenities

Utilities	Sewer Connected
Parking Spaces	3
Parking	Attached
# of Garages	3
Golf Course	N
Virtual Tour	<a href="https://my.matterport.com/show/?m=X1ogPJfSUPS&amp;mls=1">https://my.matterport.com/show/?m=X1ogPJfSUPS&amp;mls=1</a>

### Interior

Interior Features	Bath-Master, Bed-Master Main Level, Double Vanity, Walk-In Closet(s), Breakfast Bar, Pantry, Kitchen Island, Solid Surface Counters
Appliances	Gas Water Heater, Dishwasher, Disposal, Microwave, Oven/Range Freestanding
Heating	Forced Air, Natural Gas
Cooling	Central Air
Stories	Two

### Exterior

Lot Description	Standard Lot 6000-9999 SF, Sidewalks, Auto Sprinkler System, Partial Sprinkler System, Pressurized Irrigation Sprinkler System
Roof	Composition

### School Information

District	Vallivue School District #139
Elementary	East Canyon

Middle	Sage Valley
High	Ridgevue

### **Additional Information**

Date Listed	October 13th, 2025
HOA Fees	\$715
HOA Fees Freq.	Annually
New Construction	Yes
Tax Year	2025
Office	CBH Sales & Marketing Inc
Contact Info	tarak@cbhhomes.com

### **Listing Details**

Listing Office	CBH Sales & Marketing Inc
----------------	---------------------------



IDX information is provided exclusively for consumers' personal, non-commercial use, and may not be used for any purpose other than to identify prospective properties consumers may be interested in purchasing. IMLS does not assume any liability for missing or inaccurate data. Information provided by IMLS is deemed reliable but not guaranteed.

Listing information last updated on October 15th, 2025 at 7:48am MDT