

\$400,000 - 7824 E Tea Party Dr., Nampa

MLS® #98964443

\$400,000

3 Bedroom, 2.00 Bathroom, 1,474 sqft

Residential on 0.14 Acres

Franklin Village, Nampa, ID

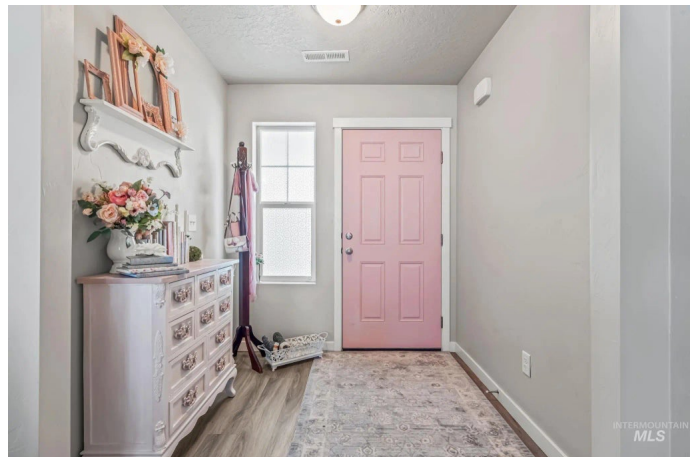
Welcome to this beautifully maintained single-owner home with thoughtful upgrades throughout. Step inside to find vinyl flooring that flows seamlessly through the entire home, adding both style and durability. The spacious living room features a tray ceiling, ceiling fan, and smurf tube with elevated outlet for your TV, creating the perfect space to relax or entertain. The kitchen is a standout with its island, carrara quartz countertops, and stunning herringbone tile design, making it as functional as it is elegant. The primary suite includes a ceiling fan, while the private bath boasts a 60" garden oval tub for soaking and unwinding. Additional features include an electric attic fan, internet plug in the closet, and a convenient man door in the garage. Outdoors, enjoy the garden boxes with drip lines, hose bibs in the front and back, and a private yard with no backyard neighbors—backing up to Orah Brandt Park. You™ll also love being close to shopping at Treasure Valley Marketplace and Costco, with easy freeway access nearby. This inviting home combines modern upgrades with everyday comfort—ready for you to move in and make it your own.

Built in 2019

Essential Information

MLS® # 98964443

Price Per SQFT \$271



Bedrooms	3
Bathrooms	2.00
Square Footage	1,474
Acres	0.14
Year Built	2019
Type	Residential
Sub-Type	Single Family Residence
Status	New

Community Information

Address	7824 E Tea Party Dr.
Area	Nampa NE (87) - 1250
Subdivision	Franklin Village
City	Nampa
County	Canyon
State	ID
Zip Code	83687

Amenities

Utilities	Sewer Connected, Broadband Internet
Parking Spaces	2
Parking	Attached, Finished Driveway
# of Garages	2
Golf Course	N

Interior

Interior Features	Bath-Master, Bed-Master Main Level, Guest Room, Split Bedroom, Family Room, Walk-In Closet(s), Pantry, Kitchen Island, Quartz Counters
Appliances	Gas Water Heater, Dishwasher, Disposal, Microwave, Oven/Range Built-In
Heating	Ceiling, Natural Gas
Cooling	Central Air
Stories	One
Primary On Main	Yes

Exterior

Lot Description	Standard Lot 6000-9999 SF, Garden, Irrigation Available, Sidewalks, Cul-De-Sac, Auto Sprinkler System, Drip Sprinkler System, Pressurized Irrigation Sprinkler System, Irrigation Sprinkler System
-----------------	----------------------------------------------------------------------------------------------------------------------------------------------------------------------------------------------------

Roof	Composition
Foundation	Crawl Space

School Information

District	Vallivue School District #139
Elementary	Birch
Middle	Sage Valley
High	Ridgevue

Additional Information

Date Listed	October 10th, 2025
Days on Market	1
HOA Fees	\$425
HOA Fees Freq.	Annually
Property Taxes	\$3,043
Tax Year	2025
Office	Silvercreek Realty Group
Contact Info	broker@silvercreekrealty.com

Listing Details

Listing Office	Silvercreek Realty Group
----------------	--------------------------



IDX information is provided exclusively for consumers' personal, non-commercial use, and may not be used for any purpose other than to identify prospective properties consumers may be interested in purchasing. IMLS does not assume any liability for missing or inaccurate data. Information provided by IMLS is deemed reliable but not guaranteed.

Listing information last updated on October 11th, 2025 at 2:03pm MDT