

\$390,000 - 8631 W Canterbury St, Boise

MLS® #98964409

\$390,000

3 Bedroom, 2.00 Bathroom, 1,340 sqft
Residential on 0.14 Acres

Maplewood Sub, Boise, ID

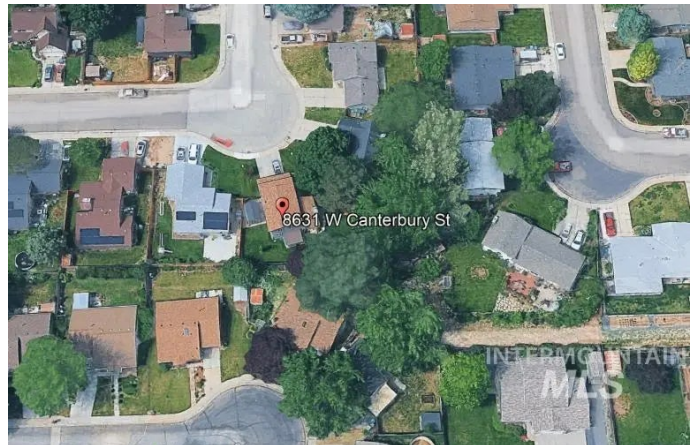
Experience the new! This exceptionally updated home looks and feels like a kid again with new siding in 2017, a new roof in 2012, new windows, completely updated bathrooms, appliances, flooring, interior & exterior paint and more! Located at the end of a quiet street but so close to downtown Boise. Hyatt Hidden Lakes Reserve Park area is near by as well as terrific schools. Water is Capital Water District with no water meter, just a fixed monthly rate of \$38/month in the summer and \$18/month in the winter. New fencing 6 years ago with metal posts and solid construction. Storage shed with power, perfect for those shop projects or a possible man cave. Laundry space under the stairs includes bonus storage. The upstairs continental bath (accessed from the main bedroom or the hallway) is beautifully updated with a large tile shower, quartz countertop, undermount sink, heated & lighter mirror, and a heated tile floor. The two-story floor plan gives you even more space on the large pie shaped lot and provides for a terrific back yard. All with beautiful mature trees and landscaping. This one is definitely worth taking a look at!

Built in 1984

Essential Information

MLS® # 98964409

Price Per SQFT \$291



More Picture

Coming Soon

Open House Saturday

10/11/2025

1pm to 3pm

INTERMOUNTAIN

Bedrooms	3
Bathrooms	2.00
Square Footage	1,340
Acres	0.14
Year Built	1984
Type	Residential
Sub-Type	Single Family Residence
Status	New

Community Information

Address	8631 W Canterbury St
Area	Boise West - 0600
Subdivision	Maplewood Sub
City	Boise
County	Ada
State	ID
Zip Code	83704-5699

Amenities

Utilities	Sewer Connected, Cable Connected
Parking Spaces	2
Parking	Attached, Finished Driveway
# of Garages	2
Golf Course	N

Interior

Interior Features	Walk-In Closet(s), Quartz Counters, Solid Surface Counters
Appliances	Gas Water Heater, Tank Water Heater, Dishwasher, Disposal, Microwave, Oven/Range Freestanding, Refrigerator, Washer, Dryer
Heating	Forced Air, Natural Gas
Cooling	Central Air
Fireplace	Yes
Fireplaces	One
Stories	Two

Exterior

Lot Description	Standard Lot 6000-9999 SF, Sidewalks, Cul-De-Sac, Auto Sprinkler System, Full Sprinkler System
Roof	Architectural Style

Foundation Crawl Space

School Information

District Boise School District #1
Elementary Valley View - Boise
Middle Fairmont
High Capital

Additional Information

Date Listed October 10th, 2025
Days on Market 1
Zoning R-1C
Property Taxes \$2,015
Tax Year 2024
Office Coldwell Banker Tomlinson
Contact Info bvanallen@cbboise.com

Listing Details

Listing Office Coldwell Banker Tomlinson



IDX information is provided exclusively for consumers' personal, non-commercial use, and may not be used for any purpose other than to identify prospective properties consumers may be interested in purchasing. IMLS does not assume any liability for missing or inaccurate data. Information provided by IMLS is deemed reliable but not guaranteed.

Listing information last updated on October 11th, 2025 at 5:03pm MDT