

\$750,000 - 2952-2966 N Milwaukee St, Boise

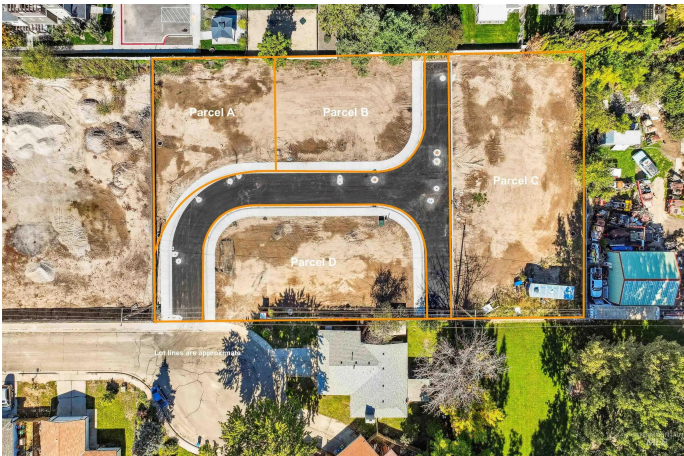
MLS® #98964399

\$750,000

Bedroom, Bathroom,
Land on 0.98 Acres

Ash Park Sub, Boise, ID

Presenting an exceptional opportunity to acquire 4 individual residential parcels (Parcel A, B, C, & D) in a centrally located neighborhood. Each lot offers a blank canvas for custom home construction or a small residential development. The newly paved cul-de-sac and utility-ready infrastructure provide immediate building potential. Parcel A: Ideally positioned at the curve of the private road, this spacious lot offers versatile layout options and excellent street presence. Parcel B: A well-proportioned lot with direct frontage on the private drive, perfect for a modern single-family residence. Parcel C: ADU approved! One of the largest parcels, offering depth and privacy—ideal for a larger home or expanded outdoor living space. Parcel D: ADU approved! Located at the entrance of the cul-de-sac, this parcel features convenient access and a wide footprint for creative design flexibility. Whether you're a developer or investor ready to build, these parcels offer flexibility, convenience, and long-term value.



Essential Information

MLS® #	98964399
Price Per Acre	\$765,306
Acres	0.98
Type	Land
Sub-Type	Unimproved Land
Status	Active

Community Information

Address	2952-2966 N Milwaukee St
Area	Boise West - 0600
Subdivision	Ash Park Sub
City	Boise
County	Ada
State	ID
Zip Code	83704

Amenities

Utilities	Electricity Available, Natural Gas Connected, Phone Connected, Cable Connected, Electricity Connected, Sewer Connected
Golf Course	N
Virtual Tour	https://www.hommati.com/3DTour-AerialVideo/unbranded/2952-N-Milwaukee-St-Boise-Id-83704--HPI63281385

Exterior

Lot Description	1/2 Acre - .99 Acres, Level
-----------------	-----------------------------

School Information

District	Boise School District #1
Elementary	Morley Nelson
Middle	Fairmont
High	Capital

Additional Information

Date Listed	October 10th, 2025
Days on Market	3
HOA Fees	\$250
HOA Fees Freq.	Annually
Property Taxes	\$3,010
Tax Year	2022
Office	Keller Williams Realty Boise
Contact Info	broker@kwboise.com

Listing Details

Listing Office	Keller Williams Realty Boise
----------------	------------------------------



IDX information is provided exclusively for consumers' personal, non-commercial use, and may not be used for any purpose other than to identify prospective properties consumers may be interested in purchasing. IMLS does not assume any liability for missing or inaccurate data. Information provided by

IMLS is deemed reliable but not guaranteed.

Listing information last updated on October 14th, 2025 at 12:48am MDT