

\$779,000 - 9435 S Egg Harbor, Kuna

MLS® #98964387

\$779,000

4 Bedroom, 3.00 Bathroom, 3,242 sqft
Residential on 0.16 Acres

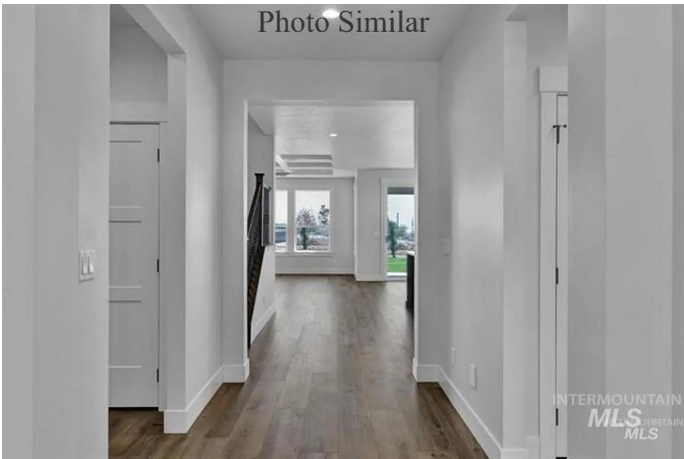
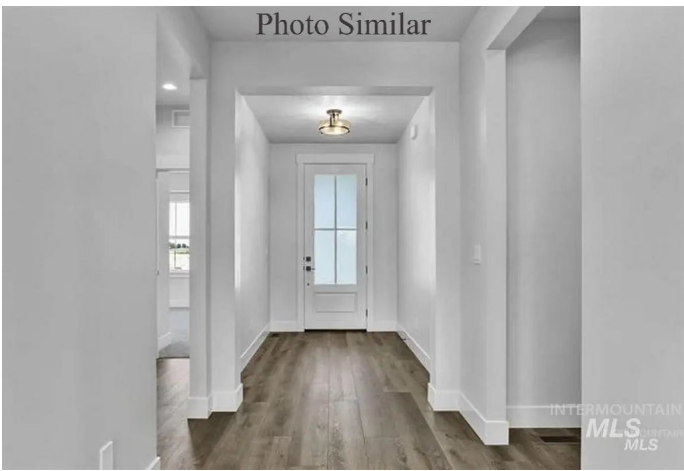
Patagonia, Kuna, ID

The Hanne by Stylish Homes: Warm, Contemporary & Comfortable. Four bedrooms, recreation room & den. The well-appointed kitchen is equipped with stainless steel appliances including a Bosch oven and speed oven, custom cabinets with quartz countertops and large pantry. The vaulted ceiling in the gathering room adds volume and fills the space with natural light. The open layout of the kitchen, gathering room & eating nook offers the perfect space for entertaining. The main floor master suite is enhanced with a coffered ceiling and the spacious master bathroom is complete with dual vanities, soaking tub & walk-in tile shower. The dual zone HVAC system keeps both floors comfortable, year-round.

Built in 2025

Essential Information

MLS® #	98964387
Price Per SQFT	\$240
Bedrooms	4
Bathrooms	3.00
Square Footage	3,242
Acres	0.16
Year Built	2025
Type	Residential
Sub-Type	Single Family Residence
Status	New



Community Information

Address	9435 S Egg Harbor
Area	Kuna - 1100
Subdivision	Patagonia
City	Kuna
County	Ada
State	ID
Zip Code	83634
Builder	Stylish Homes

Amenities

Utilities	Sewer Connected, Cable Connected
Parking Spaces	3
Parking	Attached
# of Garages	3
Has Pool	Yes
Pool	Community
Golf Course	N

Interior

Interior Features	Bath-Master, Bed-Master Main Level, Den/Office, Great Room, Rec/Bonus, Double Vanity, Walk-In Closet(s), Walk In Shower, Pantry, Kitchen Island, Quartz Counters
Appliances	Gas Water Heater, Dishwasher, Disposal, Double Oven, Gas Range
Heating	Forced Air
Cooling	Central Air
Fireplace	Yes
Fireplaces	Gas, Insert
Stories	Two
Primary On Main	Yes

Exterior

Lot Description	Standard Lot 6000-9999 SF, Sidewalks, Auto Sprinkler System, Full Sprinkler System, Pressurized Irrigation Sprinkler System
Roof	Architectural Style
Foundation	Crawl Space, Slab

School Information

District	Kuna School District #3
----------	-------------------------

Elementary	Silver Trail
Middle	Kuna
High	Kuna

Additional Information

Date Listed	October 10th, 2025
HOA Fees	\$700
HOA Fees Freq.	Annually
New Construction	Yes
Tax Year	2024
Office	Idaho Real Estate Associates
Contact Info	rmcconnell@prudentialidahorealty.com

Listing Details

Listing Office	Idaho Real Estate Associates
----------------	------------------------------



IDX information is provided exclusively for consumers' personal, non-commercial use, and may not be used for any purpose other than to identify prospective properties consumers may be interested in purchasing. IMLS does not assume any liability for missing or inaccurate data. Information provided by IMLS is deemed reliable but not guaranteed.

Listing information last updated on October 11th, 2025 at 4:48pm MDT