

\$349,800 - 1324 Tacola, Nampa

MLS® #98964368

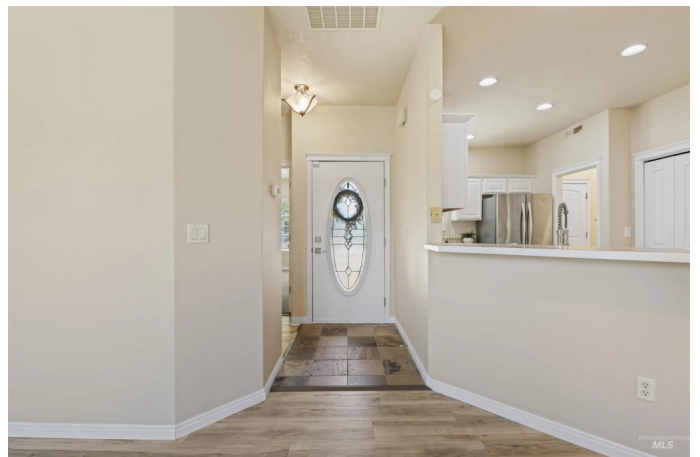
\$349,800

3 Bedroom, 2.00 Bathroom, 1,194 sqft

Residential on 0.13 Acres

The Ranch, Nampa, ID

Welcome home to this beautifully maintained single-story residence nestled in a quiet, well-kept community where the front yard is maintained by the HOA and backyard care is available for a small fee, making low-maintenance living effortless. This home offers the perfect blend of comfort and convenience, located just minutes from major shopping, dining, retail, and easy freeway access. Inside, you'll find a bright and open floor plan with updated flooring and fresh interior paint throughout, creating a clean, modern, and inviting atmosphere. The thoughtfully designed split-bedroom layout features two private en suites, ideal for guests, family, or multi-generational living. The spacious kitchen opens to the living and dining areas, perfect for entertaining or relaxing evenings at home. Step outside to a covered patio overlooking a private backyard with mature fruit trees, an ideal spot for morning coffee or evening gatherings. A large double-entry storage shed provides ample space for tools, hobbies, or seasonal items. Additional highlights include an updated HVAC system (replaced in 2016), abundant natural light, and a turnkey condition that allows you to move right in and start enjoying from day one. Experience peaceful living in a desirable neighborhood that balances convenience, community, and charm. This home truly checks every box! A 3% Co-op broker fee is being offered.



Built in 2005

Essential Information

MLS® #	98964368
Price Per SQFT	\$293
Bedrooms	3
Bathrooms	2.00
Square Footage	1,194
Acres	0.13
Year Built	2005
Type	Residential
Sub-Type	Single Family Residence
Status	New

Community Information

Address	1324 Tacola
Area	Nampa NW (51) - 1270
Subdivision	The Ranch
City	Nampa
County	Canyon
State	ID
Zip Code	83651

Amenities

Utilities	Sewer Connected
Parking Spaces	2
Parking	Attached
# of Garages	2
Golf Course	N

Interior

Interior Features	Bath-Master, Bed-Master Main Level, Split Bedroom, Two Master Bedrooms, Walk-In Closet(s), Pantry, Laminate Counters
Appliances	Gas Water Heater, Dishwasher, Microwave, Oven/Range Freestanding, Refrigerator
Heating	Natural Gas
Cooling	Central Air
Stories	One
Primary On Main	Yes

Two Primary Bedrooms Yes

Exterior

Lot Description Sm Lot 5999 SF, Sidewalks, Auto Sprinkler System, Full Sprinkler System, Pressurized Irrigation Sprinkler System

Roof Architectural Style

School Information

District Vallivue School District #139

Elementary East Canyon

Middle Summitvue

High Ridgevue

Additional Information

Date Listed October 10th, 2025

HOA Fees \$500

HOA Fees Freq. Annually

Property Taxes \$2,757

Tax Year 2

Structures Storage Shed

Office Silvercreek Realty Group

Contact Info broker@silvercreekrealty.com

Listing Details

Listing Office Silvercreek Realty Group



IDX information is provided exclusively for consumers' personal, non-commercial use, and may not be used for any purpose other than to identify prospective properties consumers may be interested in purchasing. IMLS does not assume any liability for missing or inaccurate data. Information provided by IMLS is deemed reliable but not guaranteed.

Listing information last updated on October 11th, 2025 at 2:03pm MDT