

# \$115,000 - 1715 W Flamingo Ave #trlr 91, Nampa

MLS® #98964359

**\$115,000**

2 Bedroom, 2.00 Bathroom, 938 sqft  
Residential

West Pine, Nampa, ID

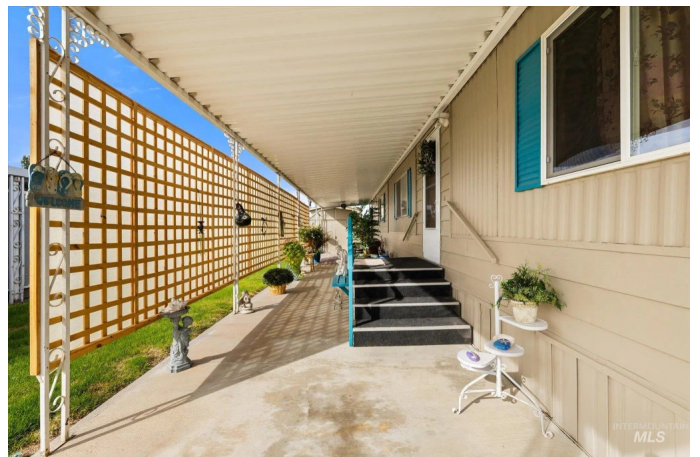
OPEN Sat 10/11 from 1-3pm. Newly remodeled inside and out within the last few months, this comfortable, spacious and super-clean home boasts new interior & exterior paint, new laminate flooring, new furnace and A/C (August 2025) and a completely remodeled primary bathroom. The split bedroom layout provides elbow-room and privacy for everyone with two bedrooms and two bathrooms separated by the common living area, featuring a kitchen with ample cabinetry and newer appliances plus refrigerator included. Tucked away in a quiet corner of this peaceful and cozy 55+ community, there is a large patio with custom privacy screen for secluded outdoor living complete with garden boxes and shed with electricity for additional storage. There are 2 covered parking spaces and RV parking is also available through the park for \$10/month. Monthly lot rent is \$540 and includes water, sewer and trash. Seller willing to convey some furniture items with the sale, including kitchen hutch, dining table, washer/dryer & recliner sofa with full-price offer. Conveniently located close to shopping and amenities.

Built in 1980

## Essential Information

MLS® # 98964359

Price Per SQFT \$123



Bedrooms	2
Bathrooms	2.00
Square Footage	938
Year Built	1980
Type	Residential
Sub-Type	Mobile/Manu Rented Lot
Status	New

### Community Information

Address	1715 W Flamingo Ave #trlr 91
Area	Nampa NW (51) - 1270
Subdivision	West Pine
City	Nampa
County	Canyon
State	ID
Zip Code	83651

### Amenities

Utilities	Sewer Connected
Parking Spaces	2
Parking	Carport
Golf Course	N

### Interior

Interior Features	Bath-Master, Bed-Master Main Level
Appliances	Electric Water Heater, Tank Water Heater, Dishwasher, Disposal, Oven/Range Freestanding, Refrigerator
Heating	Electric, Forced Air
Cooling	Central Air
Stories	One
Primary On Main	Yes

### Exterior

Lot Description	Auto Sprinkler System
Roof	Other

### School Information

District	Vallivue School District #139
Elementary	East Canyon

Middle	Sage Valley
High	Ridgevue

### **Additional Information**

Date Listed	October 10th, 2025
Property Taxes	\$928
Tax Year	2025
Structures	Storage Shed
Office	RE/MAX Capital City
Contact Info	bmayesreo@msn.com

### **Listing Details**

Listing Office	RE/MAX Capital City
----------------	---------------------



IDX information is provided exclusively for consumers' personal, non-commercial use, and may not be used for any purpose other than to identify prospective properties consumers may be interested in purchasing. IMLS does not assume any liability for missing or inaccurate data. Information provided by IMLS is deemed reliable but not guaranteed.

Listing information last updated on October 11th, 2025 at 1:48pm MDT