

\$395,000 - 1629 S Penninger Drive, Boise

MLS® #98964334

\$395,000

3 Bedroom, 1.00 Bathroom, 1,100 sqft

Residential on 0.24 Acres

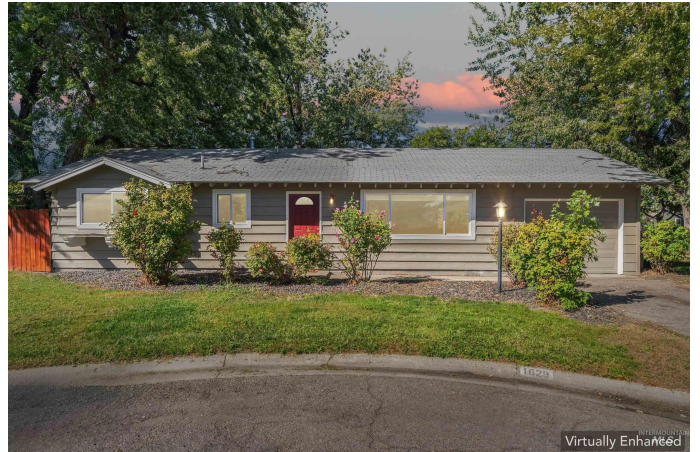
Terra Grande Pa, Boise, ID

Beautiful home in the heart of Boise! Nestled in a quiet cul-de-sac, this charming property sits on a spacious .24-acre lot with mature shade trees, garden space, and RV parking. Enjoy two storage sheds—one oversized with a brand-new roof that could double as a shop. Inside, the home feels fresh and inviting with brand-new carpet, interior and exterior paint, and a newer furnace (only a year old). All appliances are included—refrigerator, stove, washer, and dryer—making this home truly move-in ready! The large backyard is perfect for entertaining, gardening, or simply relaxing under the trees. Located just a short walk to Starbucks, shopping, and restaurants, this home blends comfort, updates, and convenience in one amazing Boise location. Don't miss it!

Built in 1959

Essential Information

MLS® #	98964334
Price Per SQFT	\$359
Bedrooms	3
Bathrooms	1.00
Square Footage	1,100
Acres	0.24
Year Built	1959
Type	Residential
Sub-Type	Single Family Residence



Status New

Community Information

Address 1629 S Penninger Drive
Area Boise South - 0500
Subdivision Terra Grande Pa
City Boise
County Ada
State ID
Zip Code 83709-0000

Amenities

Utilities Sewer Connected, Electricity Connected
Parking Spaces 1
Parking Attached, RV Access/Parking
of Garages 1
RV/Boat Parking Yes
Golf Course N
Virtual Tour <https://www.hommati.com/3DTour-AerialVideo/unbranded/1629-Penninger-Dr-Boise-Id-83709--HPI63251008>

Interior

Interior Features Workbench, Guest Room, Formal Dining, Family Room, Laminate Counters
Appliances Gas Water Heater, Tank Water Heater, Dishwasher, Disposal, Oven/Range Freestanding, Refrigerator
Heating Forced Air, Natural Gas
Cooling Central Air
Stories One
Primary On Main Yes

Exterior

Lot Description 10000 SF - .49 AC, Garden, R.V. Parking, Cul-De-Sac, Auto Sprinkler System, Full Sprinkler System
Roof Composition

School Information

District Boise School District #1
Elementary Maple Grove
Middle Fairmont

High Borah

Additional Information

Date Listed	October 10th, 2025
Property Taxes	\$2,719
Tax Year	2024
Structures	Shop, Storage Shed
Office	Silvercreek Realty Group
Contact Info	broker@silvercreekrealty.com

Listing Details

Listing Office	Silvercreek Realty Group
----------------	--------------------------



IDX information is provided exclusively for consumers' personal, non-commercial use, and may not be used for any purpose other than to identify prospective properties consumers may be interested in purchasing. IMLS does not assume any liability for missing or inaccurate data. Information provided by IMLS is deemed reliable but not guaranteed.

Listing information last updated on October 11th, 2025 at 6:48pm MDT