

\$689,900 - 360 E Sydmor Dr, Boise

MLS® #98964299

\$689,900

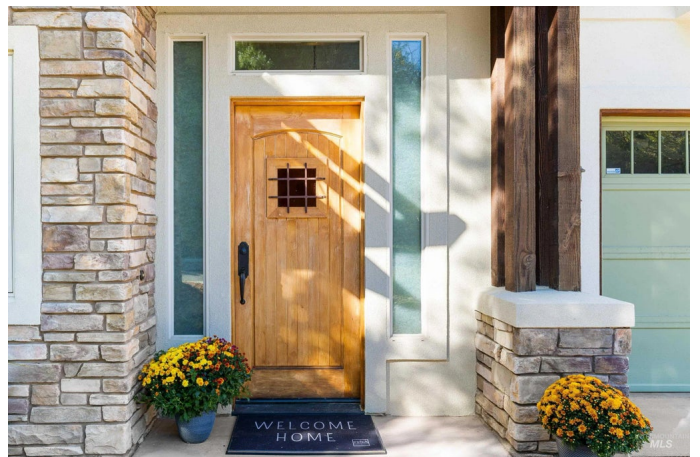
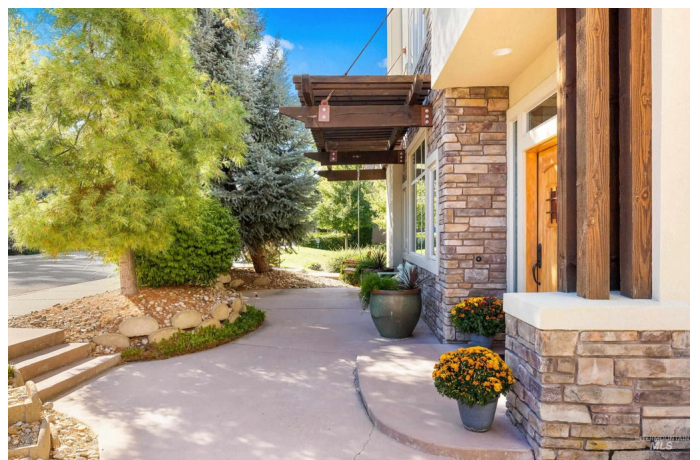
3 Bedroom, 3.00 Bathroom, 2,101 sqft

Residential on 0.08 Acres

Bridgewalk, Boise, ID

This Southeast Boise craftsman perfectly blends timeless character with thoughtful modern design and is anything but cookie cutter. Peacefully tucked within a charming community, this home sits beside a tranquil common area with a water feature and fire pit. Inside, you'll find custom carpentry and authentic woodwork adding warmth and distinction at every turn. The expansive great room soars with two stories of windows, flooding the space with natural light. High-end finishes and rich details including wood accents, built-ins & a corner gas fireplace create an inviting atmosphere. The kitchen offers a newer appliance package, granite counters, a breakfast bar and display cabinets. The split staircase leads to a smartly designed upper level with an oversized primary suite featuring its own private deck with treetop views. The spa-like bath offers an oversized soaking tub, walk-in shower, and generous walk-in closet. Two additional bedrooms, full bath, and a built-in desk nook complete the upstairs. Recent upgrades include a new roof in 2025, new furnace 2023, new water heater 2021, new kitchen appliances, refreshed front stucco, and upgraded Hunter Douglas window coverings. HOA dues include full landscaping and lawn care, making life here as easy as it is beautiful. Located just minutes from downtown, the Greenbelt, and the foothills, this home captures the best of Boise living.

Built in 2007



Essential Information

MLS® #	98964299
Price Per SQFT	\$328
Bedrooms	3
Bathrooms	3.00
Square Footage	2,101
Acres	0.08
Year Built	2007
Type	Residential
Sub-Type	Single Family Residence
Status	New

Community Information

Address	360 E Sydmor Dr
Area	Boise SE - 0300
Subdivision	Bridgewalk
City	Boise
County	Ada
State	ID
Zip Code	83706
Builder	Studio L

Amenities

Utilities	Sewer Connected
Parking Spaces	2
Parking	Attached, Finished Driveway
# of Garages	2
Is Waterfront	Yes
Waterfront	Waterfront
Golf Course	N

Interior

Interior Features	Bath-Master, Guest Room, Den/Office, Great Room, Double Vanity, Walk-In Closet(s), Walk In Shower, Pantry, Granite Counters
Appliances	Gas Water Heater, Tank Water Heater, Dishwasher, Disposal, Double Oven, Microwave, Oven/Range Freestanding, Refrigerator
Heating	Forced Air, Natural Gas
Cooling	Central Air
Fireplace	Yes

Fireplaces	One, Gas
Stories	Two

Exterior

Lot Description	Sm Lot 5999 SF, Bus on City Route, Irrigation Available, Sidewalks, Auto Sprinkler System, Drip Sprinkler System
Roof	Composition

School Information

District	Boise School District #1
Elementary	White Pine - Boise
Middle	East Jr
High	Timberline

Additional Information

Date Listed	October 8th, 2025
Days on Market	1
Zoning	R-1C
HOA Fees	\$1,150
HOA Fees Freq.	Semi-Annually
Property Taxes	\$5,466
Tax Year	2024
Office	Keller Williams Realty Boise
Contact Info	broker@kwboise.com

Listing Details

Listing Office	Keller Williams Realty Boise
----------------	------------------------------



IDX information is provided exclusively for consumers' personal, non-commercial use, and may not be used for any purpose other than to identify prospective properties consumers may be interested in purchasing. IMLS does not assume any liability for missing or inaccurate data. Information provided by IMLS is deemed reliable but not guaranteed.

Listing information last updated on October 11th, 2025 at 8:48pm MDT