

\$669,880 - 6402 E One Tree Place, Eagle

MLS® #98964298

\$669,880

3 Bedroom, 2.00 Bathroom, 1,702 sqft
Residential on 0.12 Acres

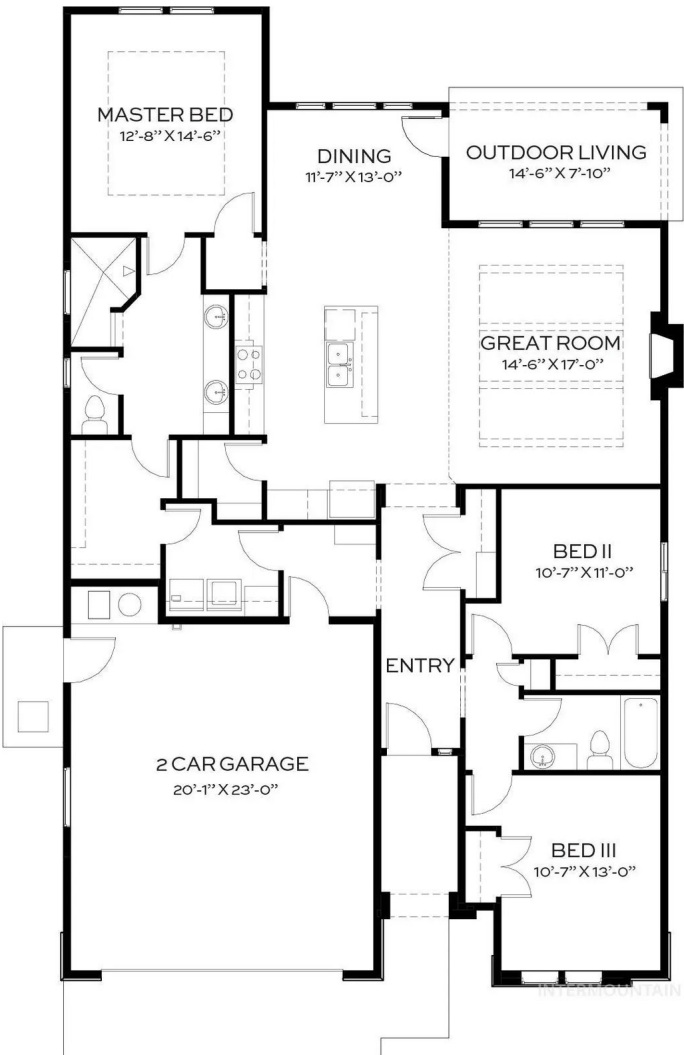
Avimor, Eagle, ID

Welcome home to Tresidio™s Messina in Avimor! Enjoy an elevated foothill view with no back or front neighbors for ultimate privacy! This thoughtfully designed single-story home features sleek black exterior windows & offers a warm, open-concept living area centered around a kitchen straight out of your dreams. Gorgeous stainless steel KitchenAid appliances, beautiful quartz countertops, white oak cabinets, and an oversized island perfect for family gatherings, you™ll fall instantly in love. The great room is flooded with natural light and features stunning white oak beams, creating a perfect space for entertaining. The primary suite offers the perfect retreat with a luxurious bathroom featuring a floor-to-ceiling tiled shower, gorgeous tile flooring, dual vanities with quartz counters, and abundant storage. Oversized secondary bedrooms provide plenty of comfort. Every detail in this home has been designed for style, function, and comfort™welcome to your dream home in Avimor! Avimor is Conservation Community, featuring 100+ miles of trails, indoor and outdoor pools, clubhouse, fitness center, tennis and pickleball courts, stocked ponds, baseball & soccer fields 60% preserved open space and views everywhere you look!

PHOTO SIMILAR

Built in 2026

Essential Information



MLS® #	98964298
Price Per SQFT	\$394
Bedrooms	3
Bathrooms	2.00
Square Footage	1,702
Acres	0.12
Year Built	2026
Type	Residential
Sub-Type	Single Family Residence
Status	New

Community Information

Address	6402 E One Tree Place
Area	Horseshoe Bend - Idaho City - 1400
Subdivision	Avimor
City	Eagle
County	Boise
State	ID
Zip Code	83629
Builder	Tresidio Homes

Amenities

Utilities	Sewer Connected
Parking Spaces	2
Parking	Attached, Finished Driveway
# of Garages	2
Has Pool	Yes
Pool	Community
View	Yes
Golf Course	N

Interior

Interior Features	Bath-Master, Bed-Master Main Level, Great Room, Double Vanity, Walk-In Closet(s), Pantry, Kitchen Island, Quartz Counters
Appliances	Gas Water Heater, Tank Water Heater, Dishwasher, Disposal, Microwave, Oven/Range Built-In, Gas Oven, Gas Range
Heating	Forced Air, Natural Gas
Cooling	Central Air
Fireplace	Yes

Fireplaces	One, Gas
Stories	One
Primary On Main	Yes

Exterior

Lot Description	Sm Lot 5999 SF, Sidewalks, Views, Canyon Rim, Cul-De-Sac, Auto Sprinkler System, Full Sprinkler System
Roof	Composition
Foundation	Crawl Space

School Information

District	Horseshoe Bend School District #73
Elementary	Horseshoe
Middle	Horse Shoe Jr
High	Horseshoe Bend

Additional Information

Date Listed	October 8th, 2025
Days on Market	1
HOA Fees	\$399
HOA Fees Freq.	Quarterly
New Construction	Yes
Tax Year	2024
Office	Homes of Idaho
Contact Info	info@homesofidaho.com

Listing Details

Listing Office	Homes of Idaho
----------------	----------------



IDX information is provided exclusively for consumers' personal, non-commercial use, and may not be used for any purpose other than to identify prospective properties consumers may be interested in purchasing. IMLS does not assume any liability for missing or inaccurate data. Information provided by IMLS is deemed reliable but not guaranteed.

Listing information last updated on October 11th, 2025 at 8:18pm MDT