

\$649,990 - 495 S 3rd East, Mountain Home

MLS® #98964250

\$649,990

6 Bedroom, 4.00 Bathroom, 3,508 sqft

Residential Income on 0.28 Acres

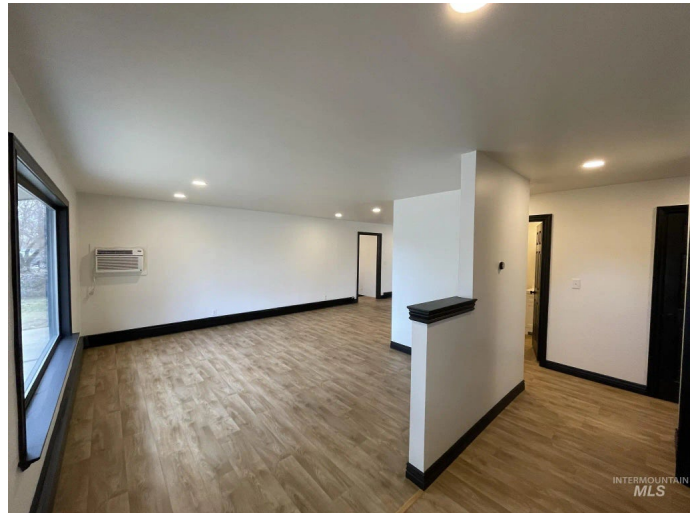
Lintons Add, Mountain Home, ID

Triplex in the heart of Mountain Home walking distance to downtown w/ solid tenant history & upside potential! Units consist of a stacked duplex w/ 3bed/1.5bath up & 3bed/1bath in basement plus a detached spacious 2-story lofted studio unit. All units have been remodeled w/ updated flooring, cabinetry, countertops, appliances, all new baths, a new roof, dedicated outdoor space, parking & more! Large lot with room for expansion w/ an existing foundation to add a garage or storage. Always rented quickly allowing an investor to collect passive income from day one w/ the flexibility to increase rents w/ military base nearby & potential new casino coming to town. Tenants pay gas and electric. Don't let this turnkey investment property pass you by!

Built in 1964

Essential Information

MLS® #	98964250
Price Per SQFT	\$185
Bedrooms	6
Bathrooms	4.00
Square Footage	3,508
Acres	0.28
Year Built	1964
Type	Residential Income
Sub-Type	Triplex
Status	New



Community Information

Address	495 S 3rd East
Area	Mtn Home-Elmore - 1500
Subdivision	Lintons Add
City	Mountain Home
County	Elmore
State	ID
Zip Code	83647

Amenities

Parking Spaces	3
Golf Course	N

Exterior

Lot Description	10000SF - .49
-----------------	---------------

School Information

District	Mountain Home School District #193
Elementary	Mtn Home
Middle	Mtn Home
High	Mountain Home

Additional Information

Date Listed	October 9th, 2025
Property Taxes	\$5,197
Tax Year	2024
Office	Timber and Love Realty, LLC
Contact Info	jclintrobertson@gmail.com

Listing Details

Listing Office	Timber and Love Realty, LLC
----------------	-----------------------------



IDX information is provided exclusively for consumers' personal, non-commercial use, and may not be used for any purpose other than to identify prospective properties consumers may be interested in purchasing. IMLS does not assume any liability for missing or inaccurate data. Information provided by IMLS is deemed reliable but not guaranteed.

Listing information last updated on October 11th, 2025 at 3:03pm MDT