

\$417,000 - 11712 W Annalee, Boise

MLS® #98964243

\$417,000

2 Bedroom, 2.00 Bathroom, 1,292 sqft

Residential on 0.08 Acres

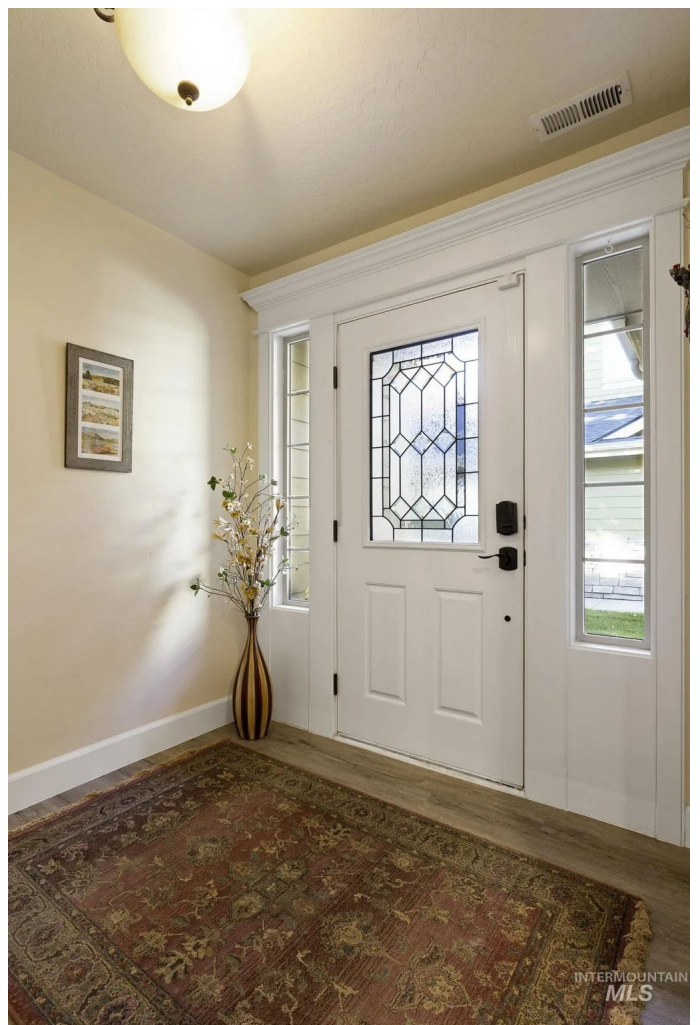
Pepperwood Esta, Boise, ID

Beautifully updated end-unit townhome surrounded by mature landscaping and peaceful green space. This light-filled 2-bedroom, 2-bath home features an oversized primary suite overlooking the trees—your own private oasis with a large ensuite bath, walk-in shower, and massive walk-in closet. The fully remodeled kitchen boasts quartzite countertops, an undermount sink, gas stove, and stylish finishes, opening to a cozy living room with a gas fireplace. Enjoy LVP flooring, ample storage, and a bright, inviting floor plan. Additional highlights include built-in shelving in the garage and a water softener. HOA covers all landscaping, sprinklers (irrigation), and exterior paint—offering the ultimate low-maintenance, lock-and-leave lifestyle or excellent rental potential. Community amenities include an in-ground pool and park-like grounds. Fantastic Boise location close to shopping, medical, and great restaurants.

Built in 2005

Essential Information

MLS® #	98964243
Price Per SQFT	\$323
Bedrooms	2
Bathrooms	2.00
Square Footage	1,292
Acres	0.08



Year Built	2005
Type	Residential
Sub-Type	Townhouse
Status	Active

Community Information

Address	11712 W Annalee
Area	Boise SW-Meridian - 0550
Subdivision	Pepperwood Esta
City	Boise
County	Ada
State	ID
Zip Code	83709

Amenities

Parking Spaces	2
Parking	Attached, Finished Driveway
# of Garages	2
Has Pool	Yes
Pool	Community, In Ground, Pool
Golf Course	N

Interior

Interior Features	Bed-Master Main Level, Double Vanity, Walk-In Closet(s), Walk In Shower, Breakfast Bar, Pantry, Kitchen Island, Quartz Counters
Appliances	Gas Water Heater, Dishwasher, Disposal, Microwave, Oven/Range Freestanding, Refrigerator, Washer, Dryer, Water Softener Owned, Gas Oven
Heating	Forced Air, Natural Gas
Cooling	Central Air
Fireplace	Yes
Fireplaces	One, Gas
Stories	One
Primary On Main	Yes

Exterior

Lot Description	Sm Lot 5999 SF, Sidewalks, Auto Sprinkler System, Drip Sprinkler System, Full Sprinkler System, Pressurized Irrigation Sprinkler System
Roof	Composition

Foundation Slab

School Information

District West Ada School District
Elementary Pepper Ridge
Middle Lewis and Clark
High Mountain View

Additional Information

Date Listed October 9th, 2025
Days on Market 3
HOA Fees \$150
HOA Fees Freq. Monthly
Property Taxes \$1,414
Tax Year 2024
Office Silvercreek Realty Group
Contact Info broker@silvercreekrealty.com

Listing Details

Listing Office Silvercreek Realty Group



IDX information is provided exclusively for consumers' personal, non-commercial use, and may not be used for any purpose other than to identify prospective properties consumers may be interested in purchasing. IMLS does not assume any liability for missing or inaccurate data. Information provided by IMLS is deemed reliable but not guaranteed.

Listing information last updated on October 12th, 2025 at 12:48am MDT