

\$329,000 - 7322 W Bed Mill St, Eagle

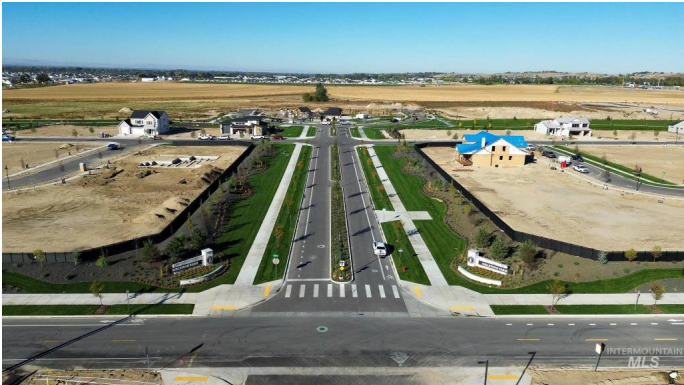
MLS® #98964200

\$329,000

Bedroom, Bathroom,
Land on 0.21 Acres

Millstone Farm, Eagle, ID

Build the home you are dreaming of in Millstone Farm with Solitude Homes. Work with Solitude Homes, an award-winning Treasure Valley builder, to design a home that is perfect for you! Millstone Farm has abundant community amenities including pools, walking paths, dog parks, sand volleyball, pickleball and basketball to name a few. Located off of Palmer Road, between Floating Feather and Beacon Light Road in Eagle, Idaho.



Essential Information

MLS® #	98964200
Price Per Acre	\$1,566,667
Acres	0.21
Type	Land
Sub-Type	Build to Suit Residential
Status	Active

Community Information

Address	7322 W Bed Mill St
Area	Eagle - 0900
Subdivision	Millstone Farm
City	Eagle
County	Ada
State	ID
Zip Code	83616

Amenities

Utilities	Natural Gas Connected, Phone Connected, Cable Connected, Electricity Connected, Sewer Connected
-----------	---

Golf Course	N
-------------	---

Exterior

Lot Description	Standard Lot 6000-9999 SqFt, Level, Surveyed
-----------------	--

School Information

District	West Ada School District
----------	--------------------------

Elementary	Eagle
------------	-------

Middle	Star
--------	------

High	Eagle
------	-------

Additional Information

Date Listed	October 9th, 2025
-------------	-------------------

Days on Market	3
----------------	---

Zoning	R-4-DA
--------	--------

HOA Fees	\$200
----------	-------

HOA Fees Freq.	Quarterly
----------------	-----------

Tax Year	2024
----------	------

Office	Point Realty LLC
--------	------------------

Contact Info	cindypointrealty@gmail.com
--------------	----------------------------

Listing Details

Listing Office	Point Realty LLC
----------------	------------------



IDX information is provided exclusively for consumers' personal, non-commercial use, and may not be used for any purpose other than to identify prospective properties consumers may be interested in purchasing. IMLS does not assume any liability for missing or inaccurate data. Information provided by IMLS is deemed reliable but not guaranteed.

Listing information last updated on October 14th, 2025 at 2:04pm MDT