

\$799,900 - 873 E Joplin Lane, Eagle

MLS® #98964132

\$799,900

3 Bedroom, 3.00 Bathroom, 2,252 sqft

Residential on 0.09 Acres

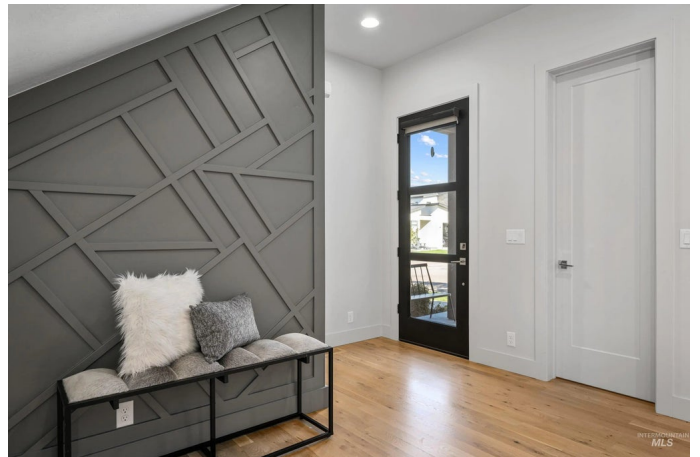
Lakemoor, Eagle, ID

MODERN HOME IN ELEVATION AT LAKEMOOR, A GATED COMMUNITY IN EAGLE! IT OFFERS EVERYTHING - QUALITY, BEAUTY, COMFORT, AND STYLE! Built in 2022 by Syringa Construction, this gorgeous modern home has an open floor plan with beautiful hardwood and tile floors, painted trim, and built-in cabinetry. The Great Room has an impressive tile fireplace and a wall of windows. The Gourmet Kitchen features an island/breakfast bar, granite countertops, Thermador appliances, and a walk-in pantry. The spacious Primary Suite features a luxurious Primary Bathroom with dual vanities, a tile walk-in shower, and a walk-in closet. It features a large Bonus Room that can be used for various purposes. Covered backyard patio. Located in the prestigious gated community, "Elevation at Lakemoor," You can walk to a community pool, pickleball, and tennis courts, fabulous restaurants, the movies, shopping, and the Boise River Greenbelt.

Built in 2022

Essential Information

MLS® #	98964132
Price Per SQFT	\$355
Bedrooms	3
Bathrooms	3.00
Square Footage	2,252



Acres	0.09
Year Built	2022
Type	Residential
Sub-Type	Single Family Residence
Status	Active

Community Information

Address	873 E Joplin Lane
Area	Eagle - 0900
Subdivision	Lakemoor
City	Eagle
County	Ada
State	ID
Zip Code	83616
Builder	Syringa Construction of I

Amenities

Utilities	Sewer Connected, Cable Connected, Broadband Internet
Parking Spaces	2
Parking	Attached, Finished Driveway
# of Garages	2
Has Pool	Yes
Pool	Community
Gated	Yes
Golf Course	N
Virtual Tour	https://tourfactory.com/idxr3227732

Interior

Interior Features	Bath-Master, Bed-Master Main Level, Great Room, Rec/Bonus, Walk-In Closet(s), Walk In Shower, Pantry, Kitchen Island, Quartz Counters
Appliances	Gas Water Heater, Dishwasher, Disposal, Double Oven, Refrigerator, Water Softener Owned
Heating	Forced Air, Natural Gas
Cooling	Central Air
Fireplace	Yes
Fireplaces	One, Gas
Stories	Two
Primary On Main	Yes

Exterior

Lot Description	Sm Lot 5999 SF, Sidewalks, Tennis Court, Cul-De-Sac, Auto Sprinkler System, Drip Sprinkler System, Full Sprinkler System, Pressurized Irrigation Sprinkler System
Roof	Composition, Architectural Style
Foundation	Crawl Space

School Information

District	West Ada School District
Elementary	Andrus
Middle	Eagle Middle
High	Eagle

Additional Information

Date Listed	October 8th, 2025
Days on Market	3
HOA Fees	\$520
HOA Fees Freq.	Quarterly
Property Taxes	\$2,734
Tax Year	2024
Office	The Smack Group
Contact Info	brad@thesmackgroup.com

Listing Details

Listing Office	The Smack Group
----------------	-----------------



IDX information is provided exclusively for consumers' personal, non-commercial use, and may not be used for any purpose other than to identify prospective properties consumers may be interested in purchasing. IMLS does not assume any liability for missing or inaccurate data. Information provided by IMLS is deemed reliable but not guaranteed.

Listing information last updated on October 12th, 2025 at 4:48am MDT