

\$675,000 - 13617 W Wrigley Ct, Boise

MLS® #98964119

\$675,000

5 Bedroom, 3.00 Bathroom, 2,968 sqft

Residential on 0.24 Acres

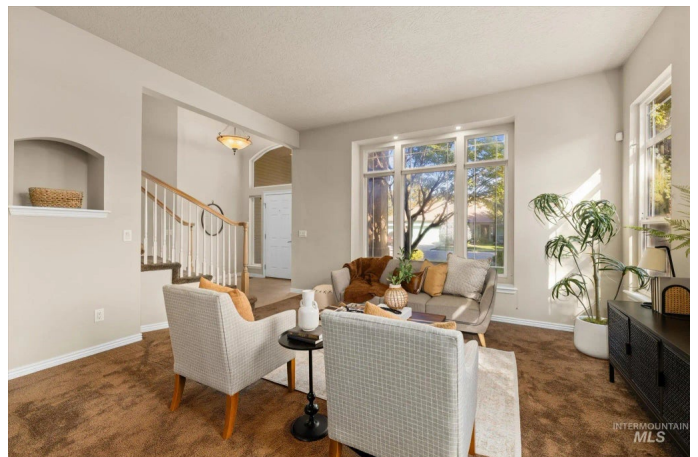
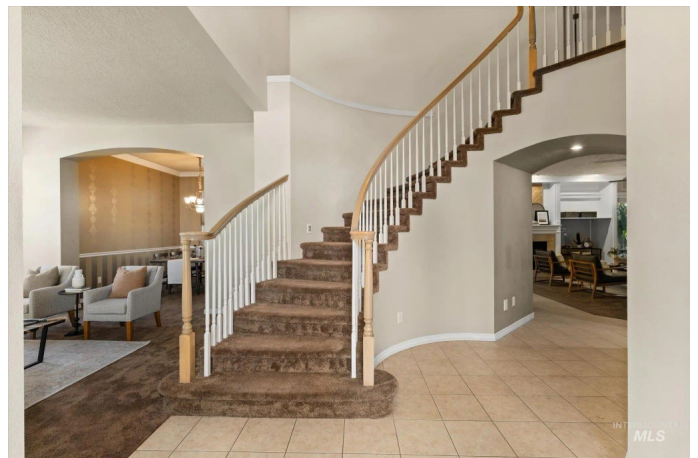
Legends, Boise, ID

Nestled in the desirable Legend neighborhood, this home combines comfort, privacy, and convenience in one inviting package. With a brand new roof and HVAC system, it's ready to provide years of worry-free living. The spacious design features generous living areas on both levels, including an open kitchen and family room that create a natural gathering place for everyday living and entertaining. A private office on the main level offers the ideal setting for work or study, while the upper level provides additional bedrooms and flexible space to fit any lifestyle. Backing to a serene community common area with no rear neighbors, the backyard offers a rare sense of openness and tranquility in such a central Boise location. Just minutes from schools, parks, shopping, and dining, this home delivers the perfect blend of space, function, and accessibility in one of West Boise's most sought-after communities.

Built in 2000

Essential Information

MLS® #	98964119
Price Per SQFT	\$227
Bedrooms	5
Bathrooms	3.00
Square Footage	2,968
Acres	0.24
Year Built	2000



Type	Residential
Sub-Type	Single Family Residence
Status	Active

Community Information

Address	13617 W Wrigley Ct
Area	Boise W-Garden City - 0650
Subdivision	Legends
City	Boise
County	Ada
State	ID
Zip Code	83713

Amenities

Utilities	Sewer Connected, Cable Connected
Parking Spaces	3
Parking	Attached
# of Garages	3
Golf Course	N

Interior

Interior Features	Bath-Master, Den/Office, Formal Dining, Family Room, Rec/Bonus, Double Vanity, Breakfast Bar, Pantry, Kitchen Island
Appliances	Dishwasher, Disposal, Microwave, Oven/Range Freestanding, Refrigerator, Water Softener Owned
Heating	Forced Air, Natural Gas
Cooling	Central Air
Fireplace	Yes
Fireplaces	One, Gas
Stories	Two

Exterior

Lot Description	10000 SF - .49 AC, Garden, Sidewalks, Auto Sprinkler System, Full Sprinkler System, Pressurized Irrigation Sprinkler System
Windows	Skylight(s)
Roof	Architectural Style

School Information

District	West Ada School District
Elementary	Joplin

Middle	Lowell Scott Middle
High	Centennial

Additional Information

Date Listed	October 8th, 2025
Days on Market	3
HOA Fees	\$500
HOA Fees Freq.	Annually
Property Taxes	\$4,108
Tax Year	2024
Office	Jin Corvin Real Estate
Contact Info	jinsagency@gmail.com

Listing Details

Listing Office	Jin Corvin Real Estate
----------------	------------------------



IDX information is provided exclusively for consumers' personal, non-commercial use, and may not be used for any purpose other than to identify prospective properties consumers may be interested in purchasing. IMLS does not assume any liability for missing or inaccurate data. Information provided by IMLS is deemed reliable but not guaranteed.

Listing information last updated on October 12th, 2025 at 5:03am MDT