

\$885,000 - 1513 N 8th, Boise

MLS® #98964105

\$885,000

3 Bedroom, 3.00 Bathroom, 2,143 sqft

Residential on 0.13 Acres

Resseguie Add, Boise, ID

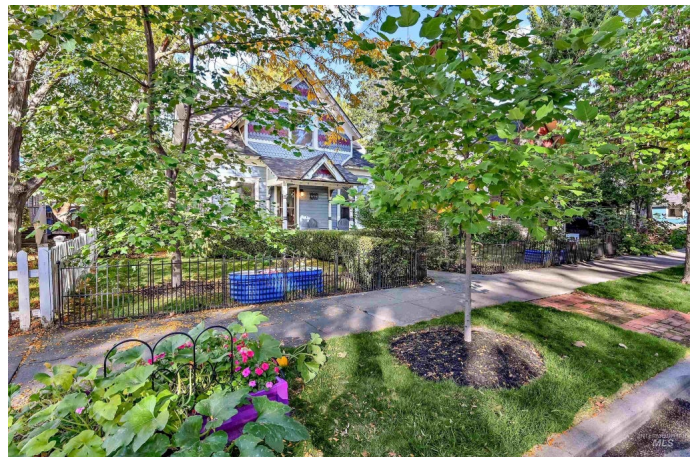
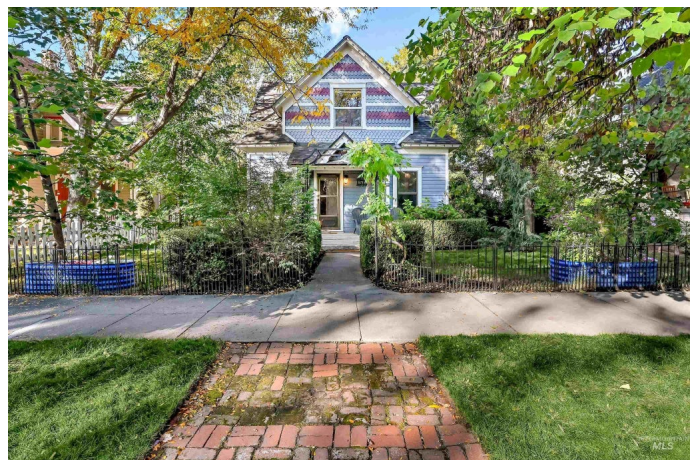
Oh, if walls could talk. Originally built in 1900, and subsequently fully renovated, this historic home in Boise's desirable North End is a Victorian-style beauty. Gorgeous cherry hardwood floors, soaring ceilings, newer kitchen appliances and countertops, updated baths, and a sizable "cottage" for guests or as a rental opportunity. The upstairs primary suite has been fashioned from the original two smaller bedrooms, creating a light & open haven with walk-in closet and private bathroom. Covered back deck, lovely front porch and fully-fenced with mature landscaping--including a beautiful cascade of roses in back. Roof & HVAC are just 10-years old. The cottage includes a living area, spacious bath with soaker tub, and large upstairs bedroom with walk-in closet. A nicely finished garage has plenty of room for one car plus storage, while next to the garage is open parking space for two more cars. Outstanding location just around the corner from Longfellow Elementary and up the street from hiking, Camel's Back Park, Hyde Park, downtown, dining, and all the North End is known and loved for.

Built in 1900

Essential Information

MLS® # 98964105

Price Per SQFT \$413



Bedrooms	3
Bathrooms	3.00
Square Footage	2,143
Acres	0.13
Year Built	1900
Type	Residential
Sub-Type	Single Family Residence
Status	Active

Community Information

Address	1513 N 8th
Area	Boise North - 0100
Subdivision	Resseguie Add
City	Boise
County	Ada
State	ID
Zip Code	83702

Amenities

Utilities	Sewer Connected, Cable Connected, Broadband Internet
Parking Spaces	1
Parking	Detached, Alley Access
# of Garages	1
Golf Course	N

Interior

Interior Features	Bath-Master, Formal Dining, Two Master Bedrooms, Breakfast Bar, Pantry, Granite Counters
Appliances	Gas Water Heater, Dishwasher, Disposal, Microwave, Oven/Range Freestanding, Refrigerator, Gas Range
Heating	Baseboard, Forced Air, Natural Gas, Ductless/Mini Split
Cooling	Central Air, Ductless/Mini Split
Stories	Two Story w/ Below Grade
Two Primary Bedrooms	Yes

Exterior

Lot Description	Sm Lot 5999 SF, Garden, Sidewalks, Chickens, Auto Sprinkler System, Drip Sprinkler System, Full Sprinkler System
Roof	Architectural Style

Foundation Crawl Space

School Information

District Boise School District #1
Elementary Longfellow
Middle North Jr
High Boise

Additional Information

Date Listed October 8th, 2025
Days on Market 3
Zoning R-1C/HD-0
Property Taxes \$5,977
Tax Year 2024
Structures Sep. Detached Dwelling, Separate Living Quarters
Office Silvercreek Realty Group
Contact Info broker@silvercreekrealty.com

Listing Details

Listing Office Silvercreek Realty Group



IDX information is provided exclusively for consumers' personal, non-commercial use, and may not be used for any purpose other than to identify prospective properties consumers may be interested in purchasing. IMLS does not assume any liability for missing or inaccurate data. Information provided by IMLS is deemed reliable but not guaranteed.

Listing information last updated on October 14th, 2025 at 7:48am MDT