

\$539,990 - 3650 W Dover St, Meridian

MLS® #98963994

\$539,990

4 Bedroom, 3.00 Bathroom, 2,332 sqft

Residential on 0.15 Acres

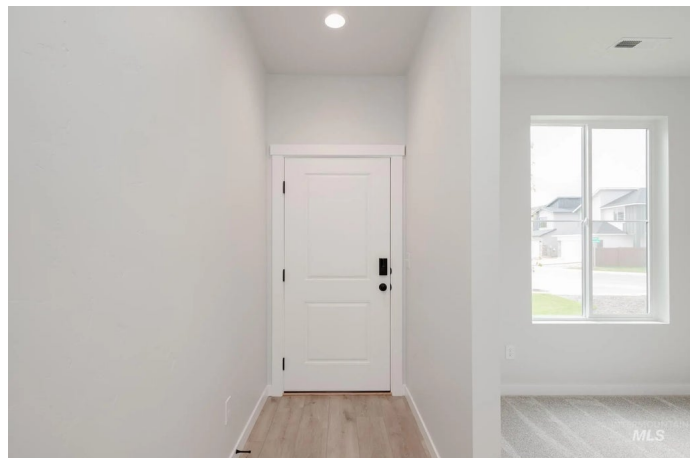
Dutton Place, Meridian, ID

Fall in Love with Low Rates! Promotional rate as low as 2.99%. This new home located in beautiful Meridian, Idaho has all the comforts you need & more! You are mere moments away from calling the Lennox 2332 your dream come true. Inside this two-story beauty, you will find the primary suite, 3 additional bedrooms, and a sunny loft upstairs, your perfect escape at the end of the day. Downstairs, you have all the space you need with the open living room, dining, and kitchen, not to mention a spacious flex room just ready for your library or office. The kitchen comes with stainless steel appliances and stylish solid surface countertops, adding both functionality and aesthetics. Enjoy seamless indoor-outdoor living with easy access to the patio, ideal for entertaining or relaxing. The well-designed laundry area provides convenient storage and organization. With a thoughtfully crafted layout and modern finishes throughout, the Lennox offers both comfort and style in every corner. Photos are of the actual home!

Built in 2025

Essential Information

MLS® #	98963994
Price Per SQFT	\$232
Bedrooms	4
Bathrooms	3.00
Square Footage	2,332



Acres	0.15
Year Built	2025
Type	Residential
Sub-Type	Single Family Residence
Status	Active

Community Information

Address	3650 W Dover St
Area	Meridian NW - 1030
Subdivision	Dutton Place
City	Meridian
County	Ada
State	ID
Zip Code	83646
Builder	CBH Homes

Amenities

Utilities	Sewer Connected
Parking Spaces	2
Parking	Attached
# of Garages	2
Golf Course	N
Virtual Tour	https://my.matterport.com/show/?m=xrfueL1eJWm&mls=1

Interior

Interior Features	Bath-Master, Bed-Master Main Level, Pantry, Kitchen Island, Solid Surface Counters
Appliances	Gas Water Heater, Dishwasher, Disposal, Microwave, Oven/Range Freestanding
Heating	Forced Air, Natural Gas
Cooling	Central Air
Stories	Two

Exterior

Lot Description	Standard Lot 6000-9999 SF, Sidewalks, Auto Sprinkler System, Partial Sprinkler System
Roof	Composition

School Information

District	West Ada School District
----------	--------------------------

Elementary	Chaparral
Middle	Meridian Middle
High	Meridian

Additional Information

Date Listed	October 7th, 2025
Days on Market	3
HOA Fees	\$680
HOA Fees Freq.	Annually
New Construction	Yes
Tax Year	2025
Office	CBH Sales & Marketing Inc
Contact Info	tarak@cbhhomes.com

Listing Details

Listing Office	CBH Sales & Marketing Inc
----------------	---------------------------



IDX information is provided exclusively for consumers' personal, non-commercial use, and may not be used for any purpose other than to identify prospective properties consumers may be interested in purchasing. IMLS does not assume any liability for missing or inaccurate data. Information provided by IMLS is deemed reliable but not guaranteed.

Listing information last updated on October 12th, 2025 at 7:18am MDT