

# \$559,900 - 338 N Sauer River Ln, Eagle

MLS® #98963962

**\$559,900**

3 Bedroom, 3.00 Bathroom, 1,961 sqft  
Residential on 0.09 Acres

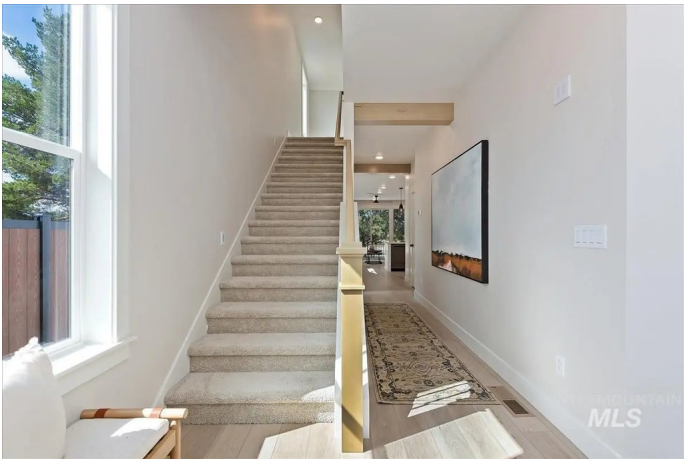
Bellemeade, Eagle, ID

Welcome to "The Henderson" by award winning Biltmore Company LLC. This stunning new home features a grand great room featuring vast windows and a gourmet chef's kitchen with quartz countertops and stainless steel appliances. Upstairs, the primary suite with a spa-like ensuite offers beautiful east facing park and mountain views. Two secondary bedrooms along with a private bathroom provide comfort and space. Bellemeade - the perfect blend of elegance, convenience and recreation. This boutique subdivision in the highly-sought after city of Eagle offers an ideal location with close proximity to outdoor recreation and a variety of amenities. From the gated entrance, private streets and lush landscaped common area to the convenient proximity to dining, shopping and recreation.

Built in 2025

## Essential Information

MLS® #	98963962
Price Per SQFT	\$286
Bedrooms	3
Bathrooms	3.00
Square Footage	1,961
Acres	0.09
Year Built	2025
Type	Residential



Sub-Type	Single Family Residence
Status	Active

### Community Information

Address	338 N Sauer River Ln
Area	Eagle - 0900
Subdivision	Bellemeade
City	Eagle
County	Ada
State	ID
Zip Code	83616
Builder	Biltmore Company LLC

### Amenities

Utilities	Sewer Connected
Parking Spaces	2
Parking	Attached, Finished Driveway
# of Garages	2
Gated	Yes
Golf Course	N

### Interior

Interior Features	Bath-Master, Great Room, Double Vanity, Walk-In Closet(s), Breakfast Bar, Pantry, Quartz Counters
Appliances	Gas Water Heater, ENERGY STAR Qualified Water Heater, Tank Water Heater, Dishwasher, Disposal, Microwave, Oven/Range Freestanding
Heating	Forced Air, Natural Gas
Cooling	Central Air
Fireplace	Yes
Fireplaces	One, Gas
Stories	Two

### Exterior

Lot Description	Sm Lot 5999 SF, Irrigation Available, Sidewalks, Auto Sprinkler System, Drip Sprinkler System, Full Sprinkler System, Pressurized Irrigation Sprinkler System
Roof	Composition, Architectural Style

### School Information

District	West Ada School District
----------	--------------------------

Elementary	Eagle
Middle	Eagle Middle
High	Eagle

**Additional Information**

Date Listed	October 7th, 2025
Days on Market	3
HOA Fees	\$160
HOA Fees Freq.	Monthly
New Construction	Yes
Tax Year	2024
Office	Silvercreek Realty Group
Contact Info	broker@silvercreekrealty.com

**Listing Details**

Listing Office	Silvercreek Realty Group
----------------	--------------------------



IDX information is provided exclusively for consumers' personal, non-commercial use, and may not be used for any purpose other than to identify prospective properties consumers may be interested in purchasing. IMLS does not assume any liability for missing or inaccurate data. Information provided by IMLS is deemed reliable but not guaranteed.

Listing information last updated on October 12th, 2025 at 4:48am MDT