

\$569,900 - 3890 W Spring House Ln, Eagle

MLS® #98963961

\$569,900

3 Bedroom, 3.00 Bathroom, 2,322 sqft
Residential on 0.09 Acres

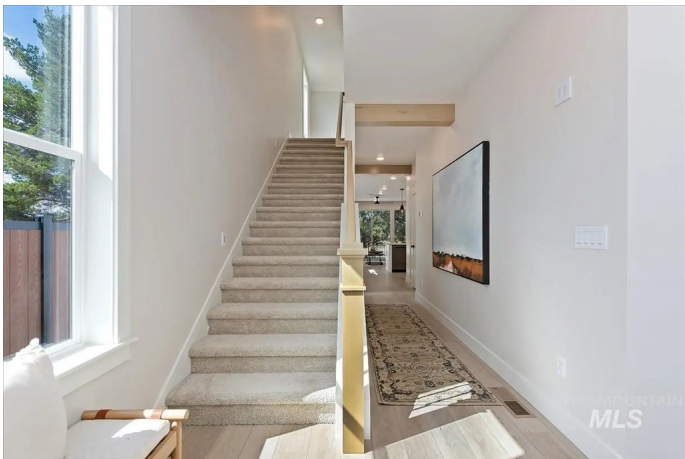
Bellemeade, Eagle, ID

Discover the Westgate, a beautifully designed home by the award-winning Biltmore Company LLC. This exceptional home sits on the picturesque park with open northeast views throughout the entire back of the home. The spacious great room, complete with a gas fireplace, is perfect for cozy evenings and entertaining. The chef's kitchen is a true showpiece, featuring stainless steel appliances, quartz countertops, and a corner pantry for ample storage. A main-level office provides the perfect space for remote work or study, while an upstairs bonus room offers endless possibilities for a media room, playroom, or additional living space. This boutique subdivision in the highly-sought after city of Eagle offers an ideal location with close proximity to outdoor recreation and a variety of amenities. From the gated entrance, private streets and lush landscaped common area to the convenient proximity to dining, shopping and recreation - Bellemeade is the perfect place to call home.

Built in 2025

Essential Information

MLS® #	98963961
Price Per SQFT	\$245
Bedrooms	3
Bathrooms	3.00
Square Footage	2,322



Acres	0.09
Year Built	2025
Type	Residential
Sub-Type	Single Family Residence
Status	Active

Community Information

Address	3890 W Spring House Ln
Area	Eagle - 0900
Subdivision	Bellemeade
City	Eagle
County	Ada
State	ID
Zip Code	83616
Builder	Biltmore Company LLC

Amenities

Utilities	Sewer Connected
Parking Spaces	2
Parking	Attached, Finished Driveway
# of Garages	2
Gated	Yes
Golf Course	N

Interior

Interior Features	Bath-Master, Den/Office, Great Room, Rec/Bonus, Double Vanity, Walk-In Closet(s), Breakfast Bar, Pantry, Kitchen Island, Quartz Counters
Appliances	Gas Water Heater, ENERGY STAR Qualified Water Heater, Tank Water Heater, Dishwasher, Disposal, Microwave, Oven/Range Freestanding
Heating	Forced Air, Natural Gas
Cooling	Central Air
Fireplace	Yes
Fireplaces	One, Gas
Stories	Two

Exterior

Lot Description	Sm Lot 5999 SF, Irrigation Available, Sidewalks, Auto Sprinkler System, Drip Sprinkler System, Full Sprinkler System, Pressurized Irrigation Sprinkler System
-----------------	---

Roof Composition, Architectural Style

School Information

District West Ada School District
Elementary Eagle
Middle Eagle Middle
High Eagle

Additional Information

Date Listed October 7th, 2025
Days on Market 3
HOA Fees \$160
HOA Fees Freq. Monthly
New Construction Yes
Tax Year 2024
Office Silvercreek Realty Group
Contact Info broker@silvercreekrealty.com

Listing Details

Listing Office Silvercreek Realty Group



IDX information is provided exclusively for consumers' personal, non-commercial use, and may not be used for any purpose other than to identify prospective properties consumers may be interested in purchasing. IMLS does not assume any liability for missing or inaccurate data. Information provided by IMLS is deemed reliable but not guaranteed.

Listing information last updated on October 12th, 2025 at 7:03am MDT