

\$449,900 - 1980 S Cactus Lily Way, Meridian

MLS® #98963889

\$449,900

3 Bedroom, 3.00 Bathroom, 1,820 sqft

Residential on 0.08 Acres

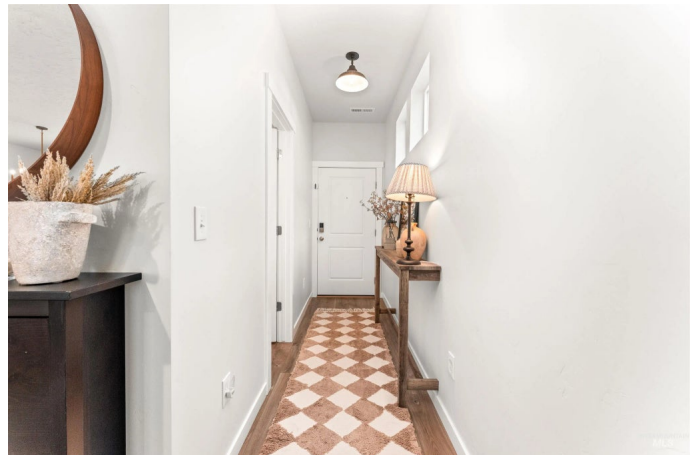
Southridge Meridian, Meridian, ID

Truly a lock & leave, low maintenance lifestyle in a highly sought after location in Meridian. This meticulously maintained home offers an unbeatable location just minutes from freeway access, restaurants, shopping, and more. Incredible, like-new two-story home nestled in one of Meridian's most coveted neighborhoods—Southridge. The spacious and functional layout features 3 bedrooms, 2.5 bathrooms, a bonus/loft area, and a split bedroom design for added privacy. The open-concept kitchen is a showstopper with a large island, ample cabinetry, and beautiful quartz countertops—perfect for entertaining or everyday living. The spacious owner's suite includes dual sinks, quartz counters, and a walk-in closet. You'll also enjoy an oversized two-car garage with additional storage space. Step outside to a beautifully designed backyard with a custom firepit and seating area—ideal for relaxing or entertaining guests.

Built in 2023

Essential Information

MLS® #	98963889
Price Per SQFT	\$247
Bedrooms	3
Bathrooms	3.00
Square Footage	1,820
Acres	0.08



Year Built	2023
Type	Residential
Sub-Type	Single Family Residence
Status	Active

Community Information

Address	1980 S Cactus Lily Way
Area	Meridian SW - 1010
Subdivision	Southridge Meridian
City	Meridian
County	Ada
State	ID
Zip Code	83642

Amenities

Utilities	Sewer Connected
Parking Spaces	2
Parking	Attached, Finished Driveway
# of Garages	2
Golf Course	N

Interior

Interior Features	Bath-Master, Guest Room, Family Room, Rec/Bonus, Double Vanity, Breakfast Bar, Kitchen Island
Appliances	Dishwasher, Disposal, Microwave, Oven/Range Freestanding
Heating	Forced Air, Natural Gas
Cooling	Central Air
Stories	Two

Exterior

Lot Description	Sm Lot 5999 SF, Garden, Irrigation Available, Sidewalks
Roof	Composition

School Information

District	West Ada School District
Elementary	Chaparral
Middle	Victory
High	Meridian

Additional Information

Date Listed	October 6th, 2025
Days on Market	3
HOA Fees	\$520
HOA Fees Freq.	Annually
Property Taxes	\$1,414
Tax Year	2024
Office	Amherst Madison
Contact Info	mike@amherst-madison.com

Listing Details

Listing Office Amherst Madison



IDX information is provided exclusively for consumers' personal, non-commercial use, and may not be used for any purpose other than to identify prospective properties consumers may be interested in purchasing. IMLS does not assume any liability for missing or inaccurate data. Information provided by IMLS is deemed reliable but not guaranteed.

Listing information last updated on October 12th, 2025 at 4:48am MDT