

# \$825,000 - 3758 S Mill Site Lane, Boise

MLS® #98963880

**\$825,000**

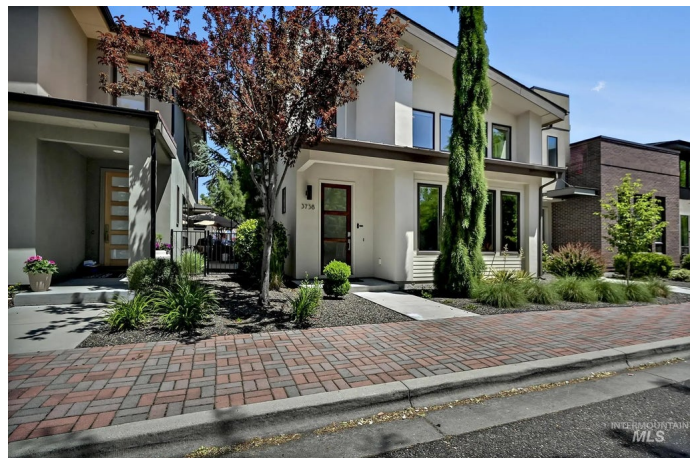
3 Bedroom, 3.00 Bathroom, 2,516 sqft

Residential on 0.08 Acres

Mill Station, Boise, ID

Nestled in Harris Ranch, where a short walk or bike ride delivers you to the Boise River Greenbelt for miles of riverfront pathways or the Ridge to River's foothills trails. This low-maintenance residence embodies the lifestyle for those who relish a peaceful community while still enjoying vibrant restaurants, a neighborhood market, the Idaho Shakespeare Festival just moments down the road, and excellent private and public school options nearby. The two-story property offers a modern aesthetic, from its stylish curb appeal all the way inside, where vaulted ceilings and abundant natural light create a welcoming ambience. On the main level, you'll find an office/den and a beautiful new custom dry bar where your wine collection can be stored in style. The open kitchen features double ovens, a large island, and a walk-in pantry, with a newly installed 3-stage RO water filtration system. Upstairs, the impressive primary suite is very spacious, with a pocket storage area that could be converted to extra closet space or an exercise spot. The carpet, electric blinds & Sonos system are new! Even the garage stands out, with a gleaming new epoxy finish floor and custom cabinets with a built-in tool chest. Complete with a quaint outdoor space for summertime lounging and outdoor cooking, this is truly the perfect lock-and-leave opportunity for anyone with a full calendar and a love of adventure.

Built in 2012



## Essential Information

MLS® #	98963880
Price Per SQFT	\$328
Bedrooms	3
Bathrooms	3.00
Square Footage	2,516
Acres	0.08
Year Built	2012
Type	Residential
Sub-Type	Single Family Residence
Status	Active

## Community Information

Address	3758 S Mill Site Lane
Area	Boise NE - 0200
Subdivision	Mill Station
City	Boise
County	Ada
State	ID
Zip Code	83716

## Amenities

Utilities	Sewer Connected, Cable Connected, Broadband Internet
Parking Spaces	2
Parking	Attached, Alley Access, Finished Driveway
# of Garages	2
Golf Course	N
Virtual Tour	<a href="https://www.tourfactory.com/idxr3210093">https://www.tourfactory.com/idxr3210093</a>

## Interior

Interior Features	Bath-Master, Den/Office, Great Room, Double Vanity, Walk-In Closet(s), Breakfast Bar, Pantry, Kitchen Island, Granite Counters
Appliances	Gas Water Heater, Tank Water Heater, Dishwasher, Disposal, Microwave, Oven/Range Built-In
Heating	Forced Air, Natural Gas
Cooling	Central Air
Fireplace	Yes
Fireplaces	One, Gas
Stories	Two

## Exterior

Lot Description	Sm Lot 5999 SF, Sidewalks, Cul-De-Sac, Drip Sprinkler System
Roof	Composition, Metal

## School Information

District	Boise School District #1
Elementary	Dallas Harris
Middle	East Jr
High	Timberline

## Additional Information

Date Listed	October 6th, 2025
Days on Market	3
Zoning	City of Boise - SP - 01
HOA Fees	\$150
HOA Fees Freq.	Quarterly
Property Taxes	\$4,656
Tax Year	2024
Office	Keller Williams Realty Boise
Contact Info	broker@kwboise.com

## Listing Details

Listing Office	Keller Williams Realty Boise
----------------	------------------------------



IDX information is provided exclusively for consumers' personal, non-commercial use, and may not be used for any purpose other than to identify prospective properties consumers may be interested in purchasing. IMLS does not assume any liability for missing or inaccurate data. Information provided by IMLS is deemed reliable but not guaranteed.

Listing information last updated on October 12th, 2025 at 7:03am MDT