

\$959,900 - 367 N Lost Canyon Way, Eagle

MLS® #98963803

\$959,900

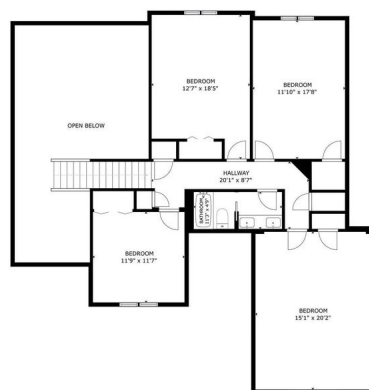
5 Bedroom, 4.00 Bathroom, 3,038 sqft
Residential on 0.39 Acres

Countryside Est, Eagle, ID

Nestled in Eagle's desirable Countryside Estates, this meticulously maintained home offers a picturesque setting, a spacious main-level Owner's Suite beautifully remodeled in 2024, and a newly finished Mother-in-Law Quarters (2025). Fresh interior paint and an updated upstairs bathroom (2025) add a modern touch, joined by generous Quartz and stone surfaces in the kitchen (2025) to complement the kitchen appliances and sink (2019-2023), and a new patio door w/ built-in shades (2025). Other thoughtful updates include plush new carpet and pad (2019), and exterior paint (2017). Major systems bring peace of mind with a brand-new HVAC w/ an electronic air filter and humidifier (2024), water heater (2023), and roof replacement (2014). Smart living is made simple with dual-zone WiFi-enabled temperature controls. Outdoors, enjoy an oversized backyard with a large covered patio, raised garden beds, a charming chicken coop, and a well-kept outbuilding for extra storage. Set on a quiet street with mature landscaping, this home overlooks a large common area with a basketball court in the distance and rolling walking paths, blending timeless character with modern convenience. Some photos have been virtually staged.

Built in 2004

Essential Information



MLS® #	98963803
Price Per SQFT	\$316
Bedrooms	5
Bathrooms	4.00
Square Footage	3,038
Acres	0.39
Year Built	2004
Type	Residential
Sub-Type	Single Family Residence
Status	Active

Community Information

Address	367 N Lost Canyon Way
Area	Eagle - 0900
Subdivision	Countryside Est
City	Eagle
County	Ada
State	ID
Zip Code	83616

Amenities

Utilities	Sewer Connected
Parking Spaces	3
Parking	Attached
# of Garages	3
Golf Course	N
Virtual Tour	https://my.matterport.com/show/?m=Sx73r1NjAQm&mls=1

Interior

Interior Features	Bath-Master, Bed-Master Main Level, Den/Office, Great Room, Double Vanity, Central Vacuum Plumbed, Walk-In Closet(s), Pantry, Laminate Counters
Appliances	Gas Water Heater, Dishwasher, Disposal, Oven/Range Built-In, Refrigerator
Heating	Forced Air, Natural Gas
Cooling	Central Air
Fireplace	Yes
Fireplaces	One, Gas
Stories	Two

Primary On Main Yes

Exterior

Lot Description 10000 SF - .49 AC, Garden, Sidewalks, Chickens, Auto Sprinkler System, Full Sprinkler System, Pressurized Irrigation Sprinkler System

Roof Composition

Foundation Crawl Space

School Information

District West Ada School District

Elementary Eagle

Middle Eagle Middle

High Eagle

Additional Information

Date Listed October 3rd, 2025

Days on Market 5

HOA Fees \$380

HOA Fees Freq. Quarterly

Property Taxes \$2,591

Tax Year 2024

Office Amherst Madison

Contact Info mike@amherst-madison.com

Listing Details

Listing Office Amherst Madison



IDX information is provided exclusively for consumers' personal, non-commercial use, and may not be used for any purpose other than to identify prospective properties consumers may be interested in purchasing. IMLS does not assume any liability for missing or inaccurate data. Information provided by IMLS is deemed reliable but not guaranteed.

Listing information last updated on October 12th, 2025 at 6:33am MDT