

# \$464,900 - 1885 N Justin Ave, Meridian

MLS® #98963762

**\$464,900**

4 Bedroom, 3.00 Bathroom, 1,853 sqft  
Residential on 0.07 Acres

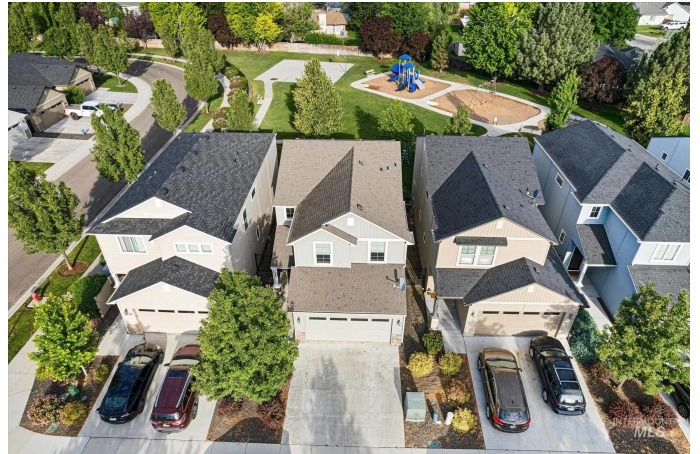
Solterra, Meridian, ID

Rare Opportunity: Seller Financing at a Low 5% Fixed Rate! Welcome to this stylishly updated home backing to a lush greenbelt and park with no rear neighbors. Take advantage of the seller's exclusive financing option at just 5% fixed—an incredible alternative to today's higher interest rates. Call the listing agent for full details. Inside, the open-concept main floor showcases luxury vinyl plank flooring, crisp white cabinetry, granite countertops, and stainless steel appliances—perfect for everyday living or entertaining. Step outside to a fully fenced backyard with a charming pergola-covered patio, string lights, and direct views of the park and playground. Upstairs, the spacious primary suite is filled with natural light and offers serene views of the greenery beyond. Fresh, modern finishes throughout make this home move-in ready—combined with below-market financing, this is a value-packed opportunity you won't want to miss.

Built in 2015

## Essential Information

MLS® #	98963762
Price Per SQFT	\$251
Bedrooms	4
Bathrooms	3.00
Square Footage	1,853
Acres	0.07



Year Built	2015
Type	Residential
Sub-Type	Single Family Residence
Status	Active

### Community Information

Address	1885 N Justin Ave
Area	Meridian NE - Boise NW - 1020
Subdivision	Solterra
City	Meridian
County	Ada
State	ID
Zip Code	83646-6516

### Amenities

Parking Spaces	2
# of Garages	2
Golf Course	N
Virtual Tour	<a href="https://my.matterport.com/show/?m=VW4YgFdooZ4&amp;brand=0">https://my.matterport.com/show/?m=VW4YgFdooZ4&amp;brand=0</a>

### Interior

Stories	Two
---------	-----

### Exterior

Lot Description	Sm Lot 5999 SF
-----------------	----------------

### School Information

District	West Ada School District
Elementary	River Valley
Middle	Lewis and Clark
High	Centennial

### Additional Information

Date Listed	October 3rd, 2025
Days on Market	3
HOA Fees	\$74
HOA Fees Freq.	Monthly
Property Taxes	\$2,155
Tax Year	2024

Office	RE/MAX Advisors
Contact Info	elisad@move-up.com

## Listing Details

Listing Office	RE/MAX Advisors
----------------	-----------------



IDX information is provided exclusively for consumers' personal, non-commercial use, and may not be used for any purpose other than to identify prospective properties consumers may be interested in purchasing. IMLS does not assume any liability for missing or inaccurate data. Information provided by IMLS is deemed reliable but not guaranteed.

Listing information last updated on October 12th, 2025 at 8:03am MDT