

\$475,800 - 7005 S Palatino Ave, Meridian

MLS® #98963620

\$475,800

3 Bedroom, 2.00 Bathroom, 1,589 sqft
Residential on 0.11 Acres

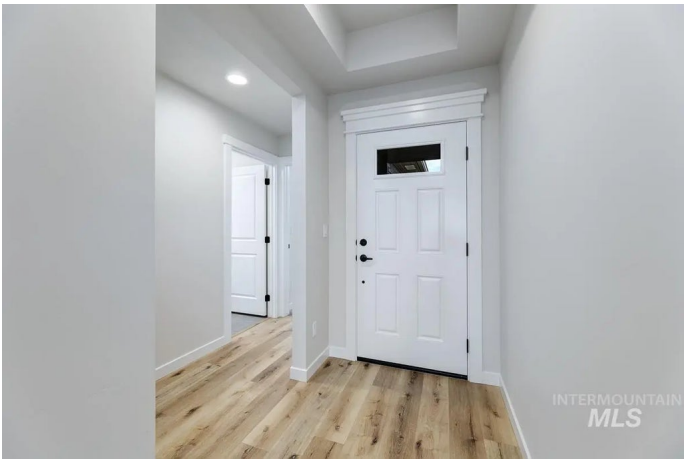
Skybreak, Meridian, ID

The HAVASU MODEL| Blackrock Homes. Introducing the Urban Collection at Skybreak! Enjoy COMMUNITY POOL, pickle ball courts, walking paths, community dog parks & playground. No backyard neighbors! INCLUDES FULL VINYL FENCING & FRONT & REAR YARD SPRINKLERS & LANDSCAPING. All quartz countertops (No cheap laminate), hardwood (lvp), upgraded trim detail, SS appliances including 5 burner backless gas LG range. Vaulted ceilings, spacious great room. Light & airy floor plan w/lots of natural light. Easy access to the interstate, Downtown Meridian, shopping, dining, & entertainment. *photos similar with same floor plan but not interior package. Interior package - Pewter

Built in 2025

Essential Information

MLS® #	98963620
Price Per SQFT	\$299
Bedrooms	3
Bathrooms	2.00
Square Footage	1,589
Acres	0.11
Year Built	2025
Type	Residential
Sub-Type	Single Family Residence
Status	Active



Community Information

Address	7005 S Palatino Ave
Area	Meridian SE - 1000
Subdivision	Skybreak
City	Meridian
County	Ada
State	ID
Zip Code	83642
Builder	Blackrock Homes

Amenities

Parking Spaces	2
# of Garages	2
Golf Course	N
Virtual Tour	https://vimeo.com/786980980

Interior

Stories	One
Primary On Main	Yes

Exterior

Lot Description	Sm Lot 5999 SF
Foundation	Crawl Space

School Information

District	West Ada School District
Elementary	Hillsdale
Middle	Lake Hazel
High	Mountain View

Additional Information

Date Listed	October 2nd, 2025
Days on Market	3
HOA Fees	\$204
HOA Fees Freq.	Quarterly
New Construction	Yes
Tax Year	2025
Office	O2 Real Estate Group
Contact Info	patm@o2marketinggroup.com

Listing Details

Listing Office

O2 Real Estate Group



IDX information is provided exclusively for consumers' personal, non-commercial use, and may not be used for any purpose other than to identify prospective properties consumers may be interested in purchasing. IMLS does not assume any liability for missing or inaccurate data. Information provided by IMLS is deemed reliable but not guaranteed.

Listing information last updated on October 12th, 2025 at 10:18am MDT