

\$754,950 - 5922 N Ulmer Ln, Garden City

MLS® #98963591

\$754,950

2 Bedroom, 2.00 Bathroom, 2,158 sqft

Residential on 0.16 Acres

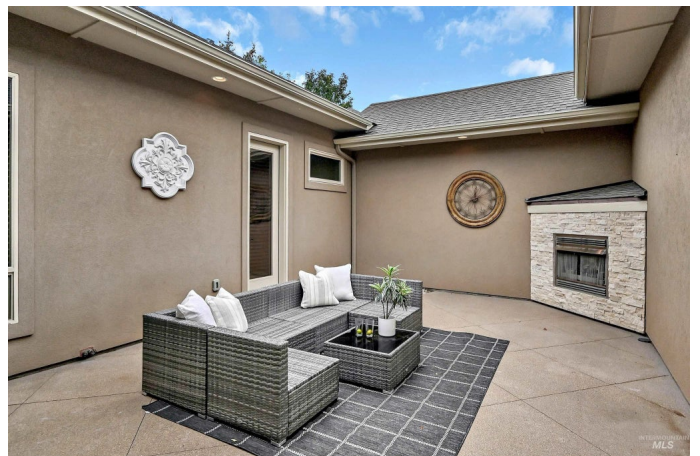
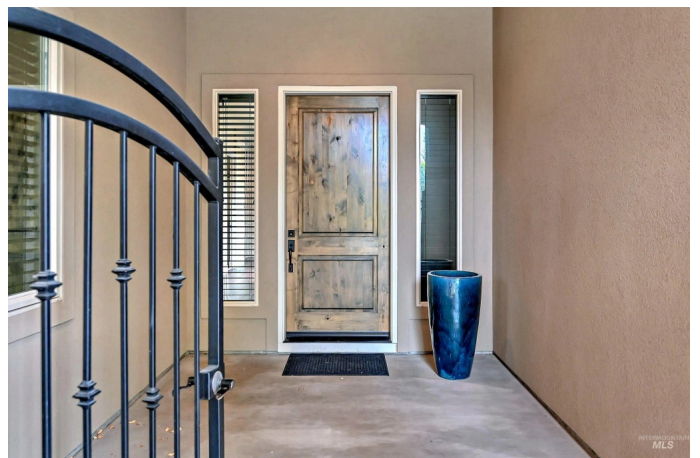
Ulmer Lane Townhome Sub, Garden City, ID

Single-level end-unit in the gated community of Rivers Bend. Enjoy private Greenbelt access, lush landscaping, and tranquil ponds with waterfalls. A central courtyard with a fireplace fills the home with light, while vaulted ceilings, hardwood floors, and custom woodwork create a refined interior. The chef's kitchen offers granite counters, upgraded cabinetry, pantry cabinet with pull-outs, large island, and an extravagant temperature-controlled wine cellar designed to showcase and preserve even the finest collection. The primary suite opens to the courtyard with spa-like bath and walk-in closet. A guest suite, office/den, and covered back patio add flexibility and comfort in the split bedroom layout. Built by Blackstead, this home includes two garages (2-car + oversized 1-car). HOA covers exterior maintenance, landscaping, roof, exterior paint, irrigation, snow removal, and community features. Perfect lock-and-leave living between Boise and Eagle, minutes to shopping, dining, and medical.

Built in 2014

Essential Information

MLS® #	98963591
Price Per SQFT	\$350
Bedrooms	2
Bathrooms	2.00
Square Footage	2,158



Acres	0.16
Year Built	2014
Type	Residential
Sub-Type	Townhouse
Status	Active

Community Information

Address	5922 N Ulmer Ln
Area	Boise NW - 0800
Subdivision	Ulmer Lane Townhome Sub
City	Garden City
County	Ada
State	ID
Zip Code	83714

Amenities

Utilities	Sewer Connected, Broadband Internet
Parking Spaces	3
Parking	Attached, Finished Driveway
# of Garages	3
Gated	Yes
Golf Course	N
Virtual Tour	https://tourfactory.com/idxr3227004

Interior

Interior Features	Bath-Master, Bed-Master Main Level, Den/Office, Great Room, Walk-In Closet(s), Pantry, Kitchen Island, Granite Counters
Appliances	Gas Water Heater, Dishwasher, Disposal, Microwave, Oven/Range Built-In, Refrigerator
Heating	Forced Air, Natural Gas, Ductless/Mini Split
Cooling	Central Air, Ductless/Mini Split
Fireplace	Yes
Fireplaces	Two, Gas
Stories	One
Primary On Main	Yes

Exterior

Lot Description	Standard Lot 6000-9999 SF, Flood Plain, Auto Sprinkler System, Full Sprinkler System, Irrigation Sprinkler System
-----------------	---

Roof	Composition
Foundation	Crawl Space

School Information

District	Boise School District #1
Elementary	Shadow Hills
Middle	River Glen Jr
High	Capital

Additional Information

Date Listed	October 2nd, 2025
Days on Market	9
HOA Fees	\$995
HOA Fees Freq.	Quarterly
Property Taxes	\$5,526
Tax Year	2025
Office	Silvercreek Realty Group
Contact Info	broker@silvercreekrealty.com

Listing Details

Listing Office	Silvercreek Realty Group
----------------	--------------------------



IDX information is provided exclusively for consumers' personal, non-commercial use, and may not be used for any purpose other than to identify prospective properties consumers may be interested in purchasing. IMLS does not assume any liability for missing or inaccurate data. Information provided by IMLS is deemed reliable but not guaranteed.

Listing information last updated on October 14th, 2025 at 10:19am MDT