

# \$425,000 - 4863 N Selway Falls Lane, Meridian

MLS® #98963513

**\$425,000**

3 Bedroom, 2.00 Bathroom, 1,379 sqft  
Residential on 0.10 Acres

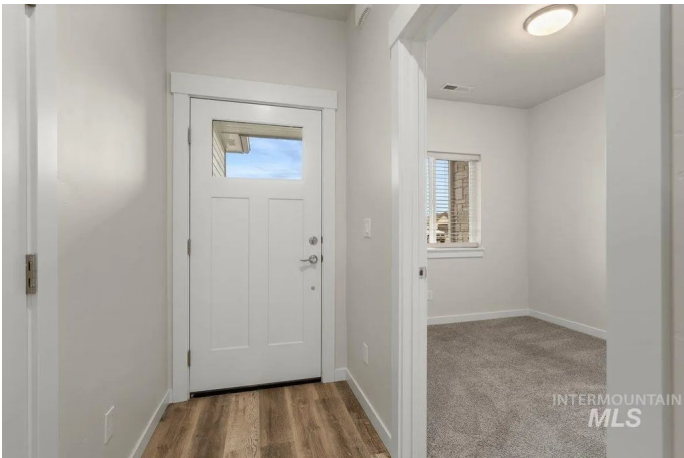
0 Not Applicable, Meridian, ID

This charming single level townhome feels like new! Featuring sleek hard-surface countertops throughout, plus pristine luxury vinyl plank flooring and carpet. Comes complete with a refrigerator, washer, and dryer. You'll love the spacious walk-in pantry and the primary suite, which includes a private bathroom with dual vanities and a generous walk-in closet. Hallways and doorways are nice and wide, too! Relax on the front patio and chat with neighbors as they pass by, or unwind on the covered back patio overlooking your private backyardâ€”with convenient access from both the living room and the primary bedroom. No rear neighbors! Smaller 55+ subdivision with community greenspace in great location near shopping and restaurants. HOA takes care of lawn and snow removal.

Built in 2024

## Essential Information

MLS® #	98963513
Price Per SQFT	\$308
Bedrooms	3
Bathrooms	2.00
Square Footage	1,379
Acres	0.10
Year Built	2024
Type	Residential
Sub-Type	Townhouse



Status	Active
--------	--------

### Community Information

Address	4863 N Selway Falls Lane
Area	Meridian NW - 1030
Subdivision	0 Not Applicable
City	Meridian
County	Ada
State	ID
Zip Code	83646
Builder	SI Construction, LLC

### Amenities

Utilities	Sewer Connected
Parking Spaces	2
Parking	Attached, Finished Driveway
# of Garages	2
Golf Course	N
Virtual Tour	<a href="https://www.homes.com/property/4863-n-selway-falls-ln-meridian-id/yfl7lnnlp9jp8/?dk=vl2dhub65z8s2t&amp;utm_source=sfmc&amp;utm_campaign=Matterport_Now_Live&amp;utm_medium=email&amp;utm_content=cta&amp;tab=1">https://www.homes.com/property/4863-n-selway-falls-ln-meridian-id/yfl7lnnlp9jp8/?dk=vl2dhub65z8s2t&amp;utm_source=sfmc&amp;utm_campaign=Matterport_Now_Live&amp;utm_medium=email&amp;utm_content=cta&amp;tab=1</a>

### Interior

Interior Features	Bath-Master, Bed-Master Main Level, Double Vanity, Walk-In Closet(s), Walk In Shower, Pantry, Kitchen Island, Quartz Counters
Appliances	Gas Water Heater, Tank Water Heater, Dishwasher, Disposal, Microwave, Oven/Range Freestanding, Refrigerator, Washer, Dryer, Gas Range
Heating	Forced Air, Natural Gas
Cooling	Central Air
Stories	One
Primary On Main	Yes

### Exterior

Lot Description	Sm Lot 5999 SF, Auto Sprinkler System, Pressurized Irrigation Sprinkler System
Roof	Composition
Foundation	Crawl Space

### School Information

District	West Ada School District
Elementary	Paramount
Middle	Sawtooth Middle
High	Rocky Mountain

### **Additional Information**

Date Listed	October 2nd, 2025
Days on Market	7
HOA Fees	\$270
HOA Fees Freq.	Quarterly
New Construction	Yes
Property Taxes	\$941
Tax Year	2025
Office	Homes of Idaho
Contact Info	info@homesofidaho.com

### **Listing Details**

Listing Office	Homes of Idaho
----------------	----------------



IDX information is provided exclusively for consumers' personal, non-commercial use, and may not be used for any purpose other than to identify prospective properties consumers may be interested in purchasing. IMLS does not assume any liability for missing or inaccurate data. Information provided by IMLS is deemed reliable but not guaranteed.

Listing information last updated on October 12th, 2025 at 11:48am MDT