

\$939,000 - 5610 W Haughburn Dr, Eagle

MLS® #98963471

\$939,000

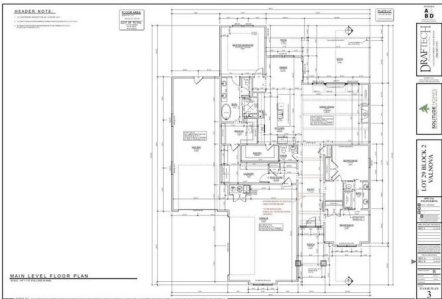
3 Bedroom, 3.00 Bathroom, 2,237 sqft
Residential on 0.26 Acres

Valnova Estates Subdivision, Eagle, ID

Ask about our amazing BUY DOWN options to save you thousands!! The Nash RV offers 3 bedrooms, 2.5 bathrooms, a 2 car garage plus RV bay. This stunning home will sit in in the brand new community of Valnova. The newest master-planned community in the foothills of Eagle! This multi-decade project spans 6,000 acres and includes gorgeous home sites PLUS a community designed for recreation, relaxation, and gracious living for all ages. Plans include a community parks as well as natural open spaces, central clubhouse featuring dining and event space, pools, spas, pickleball and tennis courts, beach-side activities located on the edge of Valnova Lake, Village Center with shops, restaurants, and picnic areas, an amphitheater in the Village Center Park, Greenway Regional Trail Corridor, a lift to take mountain bikes and hikers to the hilltop trails in the summer, ice skating and magic carpet service as a tubing hill in the winter, and an 18-Hole Championship Golf Course. Taxes are TBD, BATVAI.



Interior Finish Selections - Trim Redlines
29-2 Valnova (Model)



Built in 2025

Essential Information

MLS® #	98963471
Price Per SQFT	\$420
Bedrooms	3
Bathrooms	3.00

Square Footage	2,237
Acres	0.26
Year Built	2025
Type	Residential
Sub-Type	Single Family Residence
Status	Active

Community Information

Address	5610 W Haughburn Dr
Area	Eagle - 0900
Subdivision	Valnova Estates Subdivision
City	Eagle
County	Ada
State	ID
Zip Code	83616
Builder	solitude homes

Amenities

Utilities	Sewer Connected
Parking Spaces	3
Parking	Attached, RV Access/Parking
# of Garages	3
RV/Boat Parking	Yes
Golf Course	N
Virtual Tour	https://sunnyskies.media/5610-W-Haughburn-Dr/idx

Interior

Interior Features	Bed-Master Main Level, Double Vanity, Walk-In Closet(s), Pantry
Appliances	Gas Water Heater, Dishwasher, Disposal, Double Oven, Microwave, Oven/Range Built-In, Refrigerator, Gas Oven, Gas Range
Heating	Forced Air, Natural Gas
Cooling	Central Air
Fireplace	Yes
Fireplaces	Gas, Insert
Stories	One
Primary On Main	Yes

Exterior

Lot Description	10000 SF - .49 AC
-----------------	-------------------

Roof	Composition
Foundation	Crawl Space

School Information

District	West Ada School District
Elementary	Star
Middle	Star
High	Eagle

Additional Information

Date Listed	October 1st, 2025
Days on Market	3
HOA Fees	\$240
HOA Fees Freq.	Monthly
New Construction	Yes
Tax Year	2025
Office	Presidio Real Estate Idaho
Contact Info	bmayerseo@msn.com

Listing Details

Listing Office	Presidio Real Estate Idaho
----------------	----------------------------



IDX information is provided exclusively for consumers' personal, non-commercial use, and may not be used for any purpose other than to identify prospective properties consumers may be interested in purchasing. IMLS does not assume any liability for missing or inaccurate data. Information provided by IMLS is deemed reliable but not guaranteed.

Listing information last updated on October 12th, 2025 at 12:03pm MDT