

# \$489,990 - 9299 W Blue Lace St, Nampa

MLS® #98963172

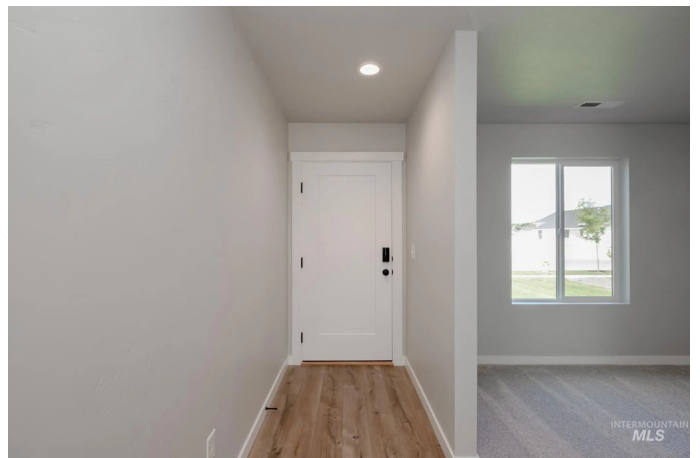
**\$489,990**

4 Bedroom, 3.00 Bathroom, 2,332 sqft

Residential on 0.14 Acres

Solano Place, Nampa, ID

Fall in Love with Low Rates! Promotional rate as low as 2.99%. Ask a Sales Specialist for details! Feel enriched in your brand new home located in Nampa, Idaho! You are mere moments away from calling the Lennox 2332 your dream come true. Inside this two-story beauty, you will find the primary suite, 3 additional bedrooms, and a sunny loft upstairs, your perfect escape at the end of the day. Downstairs, you have all the space you need with the open living room, dining, and kitchen, not to mention a spacious flex room just ready for your library or office. The kitchen comes with stainless steel appliances and stylish solid surface countertops, adding both functionality and aesthetics to the kitchen. Enjoy seamless indoor-outdoor living with easy access to the patio, ideal for entertaining or relaxing. The well-designed laundry area provides convenient storage and organization. With a thoughtfully crafted layout and modern finishes throughout, the Lennox offers both comfort and style in every corner. Photos are similar. All selections are subject to change without notice, please call to verify.



Built in 2025

## Essential Information

MLS® # 98963172

Price Per SQFT \$210

Bedrooms 4

Bathrooms	3.00
Square Footage	2,332
Acres	0.14
Year Built	2025
Type	Residential
Sub-Type	Single Family Residence
Status	Active

### Community Information

Address	9299 W Blue Lace St
Area	Caldwell NW - 1275
Subdivision	Solano Place
City	Nampa
County	Canyon
State	ID
Zip Code	83687
Builder	CBH Homes

### Amenities

Utilities	Sewer Connected
Parking Spaces	3
Parking	Attached
# of Garages	3
Golf Course	N
Virtual Tour	<a href="https://my.matterport.com/show/?m=xrfueL1eJWm&amp;mls=1">https://my.matterport.com/show/?m=xrfueL1eJWm&amp;mls=1</a>

### Interior

Interior Features	Bath-Master, Great Room, Double Vanity, Walk-In Closet(s), Walk In Shower, Breakfast Bar, Pantry, Kitchen Island, Solid Surface Counters
Appliances	Gas Water Heater, Dishwasher, Disposal, Microwave, Oven/Range Freestanding
Heating	Forced Air, Natural Gas
Cooling	Central Air
Stories	Two

### Exterior

Lot Description	Standard Lot 6000-9999 SF, Sidewalks, Auto Sprinkler System, Partial Sprinkler System, Pressurized Irrigation Sprinkler System
Roof	Composition

**School Information**

District	Vallivue School District #139
Elementary	East Canyon
Middle	Sage Valley
High	Ridgevue

**Additional Information**

Date Listed	September 29th, 2025
Days on Market	3
HOA Fees	\$545
HOA Fees Freq.	Annually
New Construction	Yes
Tax Year	2025
Office	CBH Sales & Marketing Inc
Contact Info	tarak@cbhhomes.com

**Listing Details**

Listing Office	CBH Sales & Marketing Inc
----------------	---------------------------



IDX information is provided exclusively for consumers' personal, non-commercial use, and may not be used for any purpose other than to identify prospective properties consumers may be interested in purchasing. IMLS does not assume any liability for missing or inaccurate data. Information provided by IMLS is deemed reliable but not guaranteed.

Listing information last updated on October 14th, 2025 at 9:03am MDT