

\$549,990 - 9271 W Blue Lace St, Nampa

MLS® #98963170

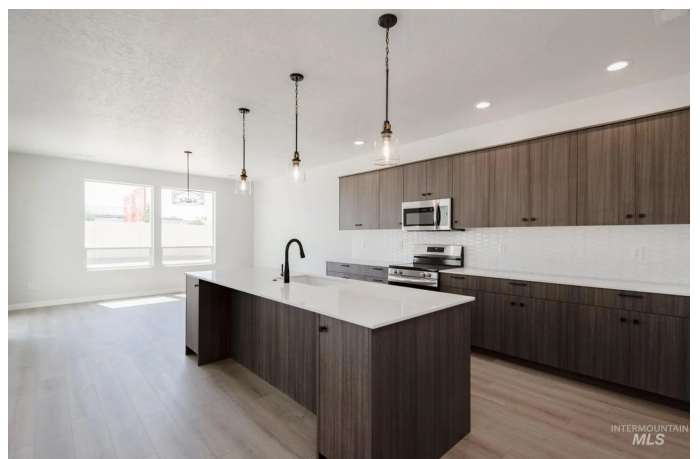
\$549,990

4 Bedroom, 3.00 Bathroom, 2,626 sqft

Residential on 0.19 Acres

Solano Place, Nampa, ID

Fall in Love with Low Rates! Promotional rate as low as 2.99%. Ask a Sales Specialist for details! Enter into a brand new home in Nampa, Idaho and enjoy its benefits and stress free living! The Riverbirch 2626 floorplan is thoughtfully designed for both function and comfort. With four bedrooms and a desirable half bath in addition to two full baths, it offers convenience for families and guests alike. A versatile room off the main living space is ideal as a home office, craft area, reading nook, or homework station. The open-concept layout connects the spacious kitchen, dining area, and great room to the back patio, perfect for entertaining or everyday relaxation. The kitchen comes with stainless steel appliances and stylish solid surface countertops, adding both functionality and aesthetics. The primary suite is tucked away for privacy and features a soaker tub, a generous en suite, and closet. A unique front-facing garage bay is separated from the main garage, offering additional storage, parking, or workspace flexibility. Photos are similar. All selections are subject to change without notice, please call to verify.



Built in 2025

Essential Information

MLS® # 98963170

Price Per SQFT \$209

Bedrooms	4
Bathrooms	3.00
Square Footage	2,626
Acres	0.19
Year Built	2025
Type	Residential
Sub-Type	Single Family Residence
Status	Active

Community Information

Address	9271 W Blue Lace St
Area	Caldwell NW - 1275
Subdivision	Solano Place
City	Nampa
County	Canyon
State	ID
Zip Code	83687
Builder	CBH Homes

Amenities

Utilities	Sewer Connected
Parking Spaces	3
Parking	Attached
# of Garages	3
Golf Course	N

Interior

Interior Features	Bath-Master, Bed-Master Main Level, Split Bedroom, Great Room, Double Vanity, Walk In Shower, Breakfast Bar, Pantry, Kitchen Island, Solid Surface Counters
Appliances	Gas Water Heater, Dishwasher, Disposal, Microwave, Oven/Range Freestanding
Heating	Forced Air, Natural Gas
Cooling	Central Air
Fireplace	Yes
Fireplaces	One, Gas, Insert
Stories	One
Primary On Main	Yes

Exterior

Lot Description	Standard Lot 6000-9999 SF, Irrigation Available, Sidewalks, Auto Sprinkler System, Partial Sprinkler System, Pressurized Irrigation Sprinkler System
Roof	Composition

School Information

District	Vallivue School District #139
Elementary	East Canyon
Middle	Sage Valley
High	Ridgevue

Additional Information

Date Listed	September 29th, 2025
Days on Market	10
HOA Fees	\$545
HOA Fees Freq.	Annually
New Construction	Yes
Tax Year	2025
Office	CBH Sales & Marketing Inc
Contact Info	tarak@cbhhomes.com

Listing Details

Listing Office	CBH Sales & Marketing Inc
----------------	---------------------------



IDX information is provided exclusively for consumers' personal, non-commercial use, and may not be used for any purpose other than to identify prospective properties consumers may be interested in purchasing. IMLS does not assume any liability for missing or inaccurate data. Information provided by IMLS is deemed reliable but not guaranteed.

Listing information last updated on October 14th, 2025 at 9:03am MDT