

\$449,990 - 924 N Mirror Creek Way, Meridian

MLS® #98963165

\$449,990

3 Bedroom, 3.00 Bathroom, 1,775 sqft

Residential on 0.10 Acres

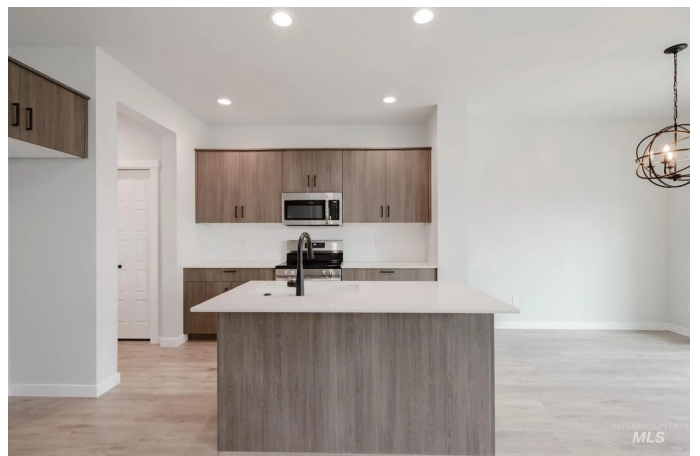
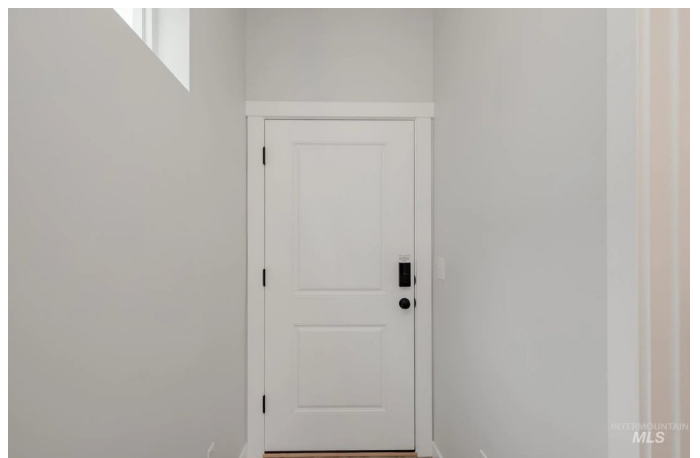
Dutton Place, Meridian, ID

Fall in Love with Low Rates! Promotional rate as low as 2.99%. Ask a Sales Specialist for details! Feel enriched in your brand new home located in Meridian, Idaho! Prioritize comfortable living in the Hailey 1775! The open concept main level is excellent for entertaining or for a cozy night in. The kitchen boasts upgraded finishes, including stainless steel appliances, a gas range, and stylish solid surface countertops. The seamless flow between these spaces makes hosting or relaxing effortless. Upstairs, you are greeted by a sprawling loft space and all three bedrooms. The second-level laundry room is conveniently situated to all the bedrooms, meaning fewer trips up and down the stairs. The primary suite is well-appointed with an en suite bath and walk-in closet. Enjoy privacy and comfort in this thoughtfully designed home. With a smart layout and modern finishes, the Hailey offers the perfect blend of style and function. Unlock your coziest life in the Hailey. Photos are of the actual home!

Built in 2025

Essential Information

MLS® #	98963165
Price Per SQFT	\$254
Bedrooms	3
Bathrooms	3.00
Square Footage	1,775



Acres	0.10
Year Built	2025
Type	Residential
Sub-Type	Single Family Residence
Status	Active

Community Information

Address	924 N Mirror Creek Way
Area	Meridian NW - 1030
Subdivision	Dutton Place
City	Meridian
County	Ada
State	ID
Zip Code	83642
Builder	CBH Homes

Amenities

Utilities	Sewer Connected
Parking Spaces	2
Parking	Attached
# of Garages	2
Golf Course	N
Virtual Tour	https://my.matterport.com/show/?m=Nk8e3D2zn95&mls=1

Interior

Interior Features	Bath-Master, Rec/Bonus, Double Vanity, Walk-In Closet(s), Walk In Shower, Breakfast Bar, Pantry, Kitchen Island, Solid Surface Counters
Appliances	Gas Water Heater, Dishwasher, Disposal, Microwave, Oven/Range Freestanding, Gas Range
Heating	Forced Air, Natural Gas
Cooling	Central Air
Stories	Two

Exterior

Lot Description	Sm Lot 5999 SF, Sidewalks, Auto Sprinkler System, Partial Sprinkler System, Pressurized Irrigation Sprinkler System
Roof	Composition

School Information

District	West Ada School District
----------	--------------------------

Elementary	Chaparral
Middle	Meridian Middle
High	Meridian

Additional Information

Date Listed	September 29th, 2025
Days on Market	7
HOA Fees	\$680
HOA Fees Freq.	Annually
New Construction	Yes
Tax Year	2025
Office	CBH Sales & Marketing Inc
Contact Info	tarak@cbhhomes.com

Listing Details

Listing Office	CBH Sales & Marketing Inc
----------------	---------------------------



IDX information is provided exclusively for consumers' personal, non-commercial use, and may not be used for any purpose other than to identify prospective properties consumers may be interested in purchasing. IMLS does not assume any liability for missing or inaccurate data. Information provided by IMLS is deemed reliable but not guaranteed.

Listing information last updated on October 12th, 2025 at 3:33pm MDT