

\$384,900 - 2941 S Ladera, Boise

MLS® #98963050

\$384,900

3 Bedroom, 2.00 Bathroom, 1,124 sqft
Residential on 0.09 Acres

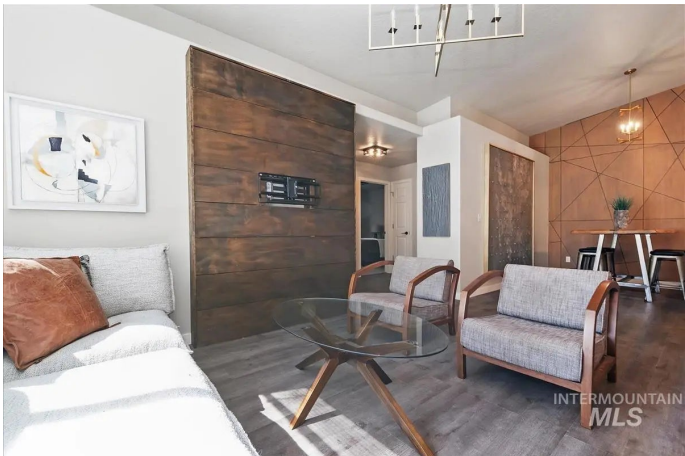
Sierra Vista, Boise, ID

Completely renovated town home on the Boise Bench with modern style and thoughtful updates throughout. The kitchen showcases concrete countertops, stainless steel appliances, and updated fixtures. Custom accent walls and modern 5-panel doors bring architectural character, while durable luxury vinyl plank flooring adds warmth and function. Bathrooms refreshed with new finishes, and all lighting and hardware replaced for a fresh, move-in ready feel. A new roof adds peace of mind for years to come. The open layout offers seamless flow for entertaining or everyday living. Enjoy low-maintenance living with the HOA handling all yard work. Located minutes from the airport, downtown, schools, parks, and freeway access, this home combines convenience, design, and quality in one of Boise’s most desirable neighborhoods.

Built in 2000

Essential Information

| | |
|----------------|-------------|
| MLS® # | 98963050 |
| Price Per SQFT | \$342 |
| Bedrooms | 3 |
| Bathrooms | 2.00 |
| Square Footage | 1,124 |
| Acres | 0.09 |
| Year Built | 2000 |
| Type | Residential |



| | |
|----------|-----------|
| Sub-Type | Townhouse |
| Status | Active |

Community Information

| | |
|-------------|--------------------|
| Address | 2941 S Ladera |
| Area | Boise Bench - 0400 |
| Subdivision | Sierra Vista |
| City | Boise |
| County | Ada |
| State | ID |
| Zip Code | 83705 |

Amenities

| | |
|----------------|-----------------|
| Utilities | Sewer Connected |
| Parking Spaces | 2 |
| Parking | Attached |
| # of Garages | 2 |
| Golf Course | N |

Interior

| | |
|-------------------|--|
| Interior Features | Bath-Master, Bed-Master Main Level |
| Appliances | Gas Water Heater, Dishwasher, Disposal |
| Heating | Forced Air, Natural Gas |
| Cooling | Central Air |
| Stories | One |
| Primary On Main | Yes |

Exterior

| | |
|-----------------|--|
| Lot Description | Sm Lot 5999 SF, Auto Sprinkler System, Pressurized Irrigation Sprinkler System |
|-----------------|--|

School Information

| | |
|------------|--------------------------|
| District | Boise School District #1 |
| Elementary | Whitney |
| Middle | South (Boise) |
| High | Borah |

Additional Information

| | |
|----------------|----------------------|
| Date Listed | September 26th, 2025 |
| Days on Market | 14 |

| | |
|----------------|------------------------------|
| Zoning | City of Boise-R-3 |
| HOA Fees | \$125 |
| HOA Fees Freq. | Monthly |
| Property Taxes | \$1,524 |
| Tax Year | 2024 |
| Office | Keller Williams Realty Boise |
| Contact Info | broker@kwboise.com |

Listing Details

Listing Office Keller Williams Realty Boise



IDX information is provided exclusively for consumers' personal, non-commercial use, and may not be used for any purpose other than to identify prospective properties consumers may be interested in purchasing. IMLS does not assume any liability for missing or inaccurate data. Information provided by IMLS is deemed reliable but not guaranteed.

Listing information last updated on October 15th, 2025 at 9:03am MDT