

\$418,000 - 2409 S Phillippi St., Boise

MLS® #98962901

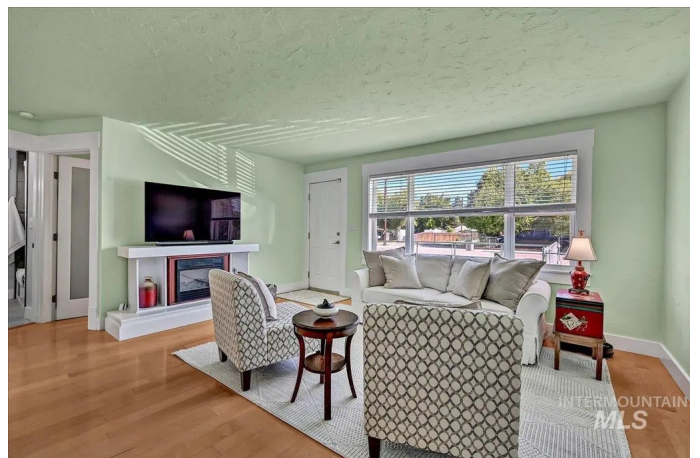
\$418,000

2 Bedroom, 1.00 Bathroom, 1,074 sqft

Residential on 0.23 Acres

Elmcrest Sub, Boise, ID

Beautifully renovated home on the Boise Bench near Phillippi Park! This large corner lot property has been thoughtfully updated from top to bottom, offering peace of mind with major improvements throughout. Inside youâ€™ll find new subflooring and hardwood flooring, a full kitchen remodel with pantry and laundry off the breezeway, and a luxurious bathroom remodel with heated tile floors. Fresh texture, trim, new windows, new doors, and hardware make the home feel modern and welcoming. Extensive system upgrades include new plumbing and fixtures, tankless water heater, updated electrical with added outlets, newer HVAC (furnace + AC 2017), new roof and sheathing (2017), carport membrane, and gutters. Exterior improvements feature HardiePlank siding, new fencing, and a 400+ sq. ft. concrete patio with stamped edging perfect for outdoor entertaining. One of the standout features is the detached office (144 sf lower + 114 sf upper) which has been fully rebuilt with new siding, roof, and interior finishes. Ideal for a home office, gym, studio, or private hangout space. Additional storage includes a new 10x16 shed, 8x8 HardiePlank shed. Yard is fully sprinklered and recently serviced (June 2025). This home is on a private well and has irrigation rights. A rare combination of modern updates, flexible living spaces, and a prime Boise Bench location this move-in ready home is a true gem!



Built in 1948

Essential Information

MLS® #	98962901
Price Per SQFT	\$389
Bedrooms	2
Bathrooms	1.00
Square Footage	1,074
Acres	0.23
Year Built	1948
Type	Residential
Sub-Type	Single Family Residence
Status	Active

Community Information

Address	2409 S Phillippi St.
Area	Boise Bench - 0400
Subdivision	Elmcrest Sub
City	Boise
County	Ada
State	ID
Zip Code	83705-3767

Amenities

Utilities	Sewer Connected, Cable Connected
Parking Spaces	1
Parking	Carport, RV Access/Parking
RV/Boat Parking	Yes
Golf Course	N
Virtual Tour	https://moodyimages.hd.pics/2409-S-Phillippi-St/idx

Interior

Interior Features	Den/Office, Family Room, Loft, Breakfast Bar, Quartz Counters, Solid Surface Counters
Appliances	Gas Water Heater, Tankless Water Heater, Dishwasher, Washer, Dryer, Gas Oven, Gas Range
Heating	Forced Air, Natural Gas
Cooling	Central Air, Wall/Window Unit(s)
Stories	One

Primary On Main Yes

Exterior

Lot Description Standard Lot 6000-9999 SF, Bus on City Route, Garden, Irrigation Available, R.V. Parking, Sidewalks, Corner Lot, Auto Sprinkler System, Drip Sprinkler System, Full Sprinkler System

Roof Architectural Style

School Information

District Boise School District #1

Elementary Hillcrest

Middle South (Boise)

High Borah

Additional Information

Date Listed September 25th, 2025

Days on Market 10

Zoning City of Boise-R-1C

Property Taxes \$2,552

Tax Year 2024

Structures Storage Shed

Office Keller Williams Realty Boise

Contact Info broker@kwboise.com

Listing Details

Listing Office Keller Williams Realty Boise



IDX information is provided exclusively for consumers' personal, non-commercial use, and may not be used for any purpose other than to identify prospective properties consumers may be interested in purchasing. IMLS does not assume any liability for missing or inaccurate data. Information provided by IMLS is deemed reliable but not guaranteed.

Listing information last updated on October 14th, 2025 at 2:34pm MDT