

\$774,900 - 56 E Jarvis St, Meridian

MLS® #98962880

\$774,900

4 Bedroom, 3.00 Bathroom, 2,959 sqft

Residential on 0.23 Acres

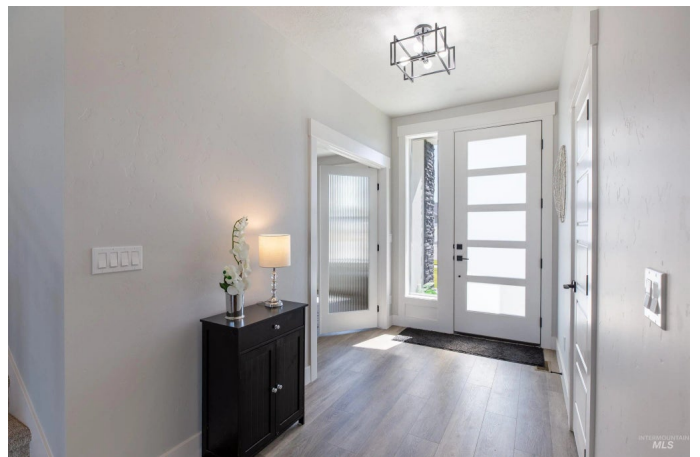
Shafer View Terrace, Meridian, ID

The Katera floor plan by All Star Custom Homes offers a beautiful modern design. 4 bedrms, 2.5 bathrms+office & 4th bedrm could be bonus. Kitchen boasts a beautiful quartz island & breakfast bar, full tile backsplash, farm sink, walk-in pantry w/appliance shelf, double ovens & lots of crisp white cabinetry. Great room style w/cozy electric, tiled fireplace flanked w/decor shelving & more cabinetry for great storage. Main level, luxurious primary w/quartz counters, gorgeous tiled shower, dual vanities & relax in the soaker tub. Walk-in closet connecting to laundry room w/deep sink, folding table & more storage. Upgraded lighting & hard surfaces throughout. Main level office w/nice light & mud bench drop zone rounds out the main level. Upstairs find a homework station & good sized bedrooms + HUGE 2nd living space/bonus room w/so many possibilities-hang out, binge watch your fave shows or guest room. 2 HVAC units for added comfort. N facing backyard, fully landscaped & fenced. 4 Car Garage including RV/Boat bay.

Built in 2025

Essential Information

MLS® #	98962880
Price Per SQFT	\$262
Bedrooms	4
Bathrooms	3.00



Square Footage	2,959
Acres	0.23
Year Built	2025
Type	Residential
Sub-Type	Single Family Residence
Status	Active

Community Information

Address	56 E Jarvis St
Area	Meridian SE - 1000
Subdivision	Shafer View Terrace
City	Meridian
County	Ada
State	ID
Zip Code	83642
Builder	All Star Custom Homes

Amenities

Utilities	Sewer Connected, Broadband Internet
Parking Spaces	4
Parking	Attached, Finished Driveway
# of Garages	4
Golf Course	N
Virtual Tour	https://tourfactory.com/idxr3179535

Interior

Interior Features	Bath-Master, Bed-Master Main Level, Split Bedroom, Den/Office, Great Room, Rec/Bonus, Double Vanity, Walk-In Closet(s), Breakfast Bar, Pantry, Kitchen Island, Quartz Counters
Appliances	Tankless Water Heater, Dishwasher, Disposal, Double Oven, Microwave, Gas Range
Heating	Forced Air, Natural Gas
Cooling	Central Air
Fireplace	Yes
Fireplaces	One
Stories	Two
Primary On Main	Yes

Exterior

Lot Description	10000 SF - .49 AC, Sidewalks, Auto Sprinkler System, Full Sprinkler System, Pressurized Irrigation Sprinkler System
Roof	Architectural Style
Foundation	Crawl Space

School Information

District	West Ada School District
Elementary	Mary McPherson
Middle	Victory
High	Mountain View

Additional Information

Date Listed	September 25th, 2025
Days on Market	17
HOA Fees	\$800
HOA Fees Freq.	Annually
New Construction	Yes
Tax Year	2024
Office	Coldwell Banker Tomlinson
Contact Info	bvanallen@cbboise.com

Listing Details

Listing Office	Coldwell Banker Tomlinson
----------------	---------------------------



IDX information is provided exclusively for consumers' personal, non-commercial use, and may not be used for any purpose other than to identify prospective properties consumers may be interested in purchasing. IMLS does not assume any liability for missing or inaccurate data. Information provided by IMLS is deemed reliable but not guaranteed.

Listing information last updated on October 14th, 2025 at 11:48pm MDT