

# \$865,000 - 2843 E Murchison St, Meridian

MLS® #98962860

**\$865,000**

4 Bedroom, 3.00 Bathroom, 3,129 sqft

Residential on 0.18 Acres

Sky Mesa, Meridian, ID

Beautiful home in Sky Mesa, close to the two community pool. Solar system to reduce and possibly eliminate power bills. 4 bedrooms plus and office, plantation shutters, remote controlled patio shades. 32 foot RV bay that includes a fully insulated garage. Primary suite has walk in shower and separate soaker tub, dual vanities, large walk in closet with built in organizers. Gas cook top and built in oven and microwave. Gas fireplace with tile surround floor to ceiling. Second bath has dual vanities as well. Utility sink in laundry room that also has tile floors and cabinets.

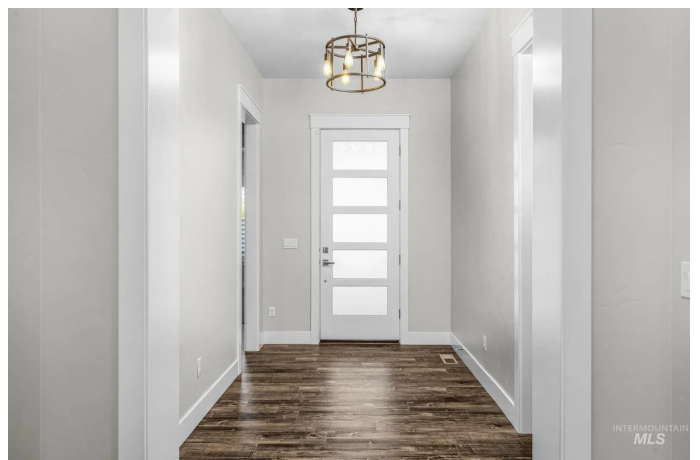
Built in 2019

## Essential Information

MLS® #	98962860
Price Per SQFT	\$276
Bedrooms	4
Bathrooms	3.00
Square Footage	3,129
Acres	0.18
Year Built	2019
Type	Residential
Sub-Type	Single Family Residence
Status	Active

## Community Information

Address	2843 E Murchison St
Area	Meridian SE - 1000



Subdivision	Sky Mesa
City	Meridian
County	Ada
State	ID
Zip Code	83642-5277
Builder	Zenith Homes, LLC

### Amenities

Utilities	Sewer Connected, Cable Connected
Parking Spaces	3
Parking	Attached, RV Access/Parking, Finished Driveway
# of Garages	3
Has Pool	Yes
Pool	Community, In Ground, Pool
RV/Boat Parking	Yes
Golf Course	N
Virtual Tour	<a href="https://my.matterport.com/show/?m=23LHTEMzgzy&amp;brand=0">https://my.matterport.com/show/?m=23LHTEMzgzy&amp;brand=0</a>

### Interior

Interior Features	Bath-Master, Bed-Master Main Level, Split Bedroom, Den/Office, Great Room, Double Vanity, Walk-In Closet(s), Breakfast Bar, Pantry, Kitchen Island, Granite Counters
Appliances	Gas Water Heater, Dishwasher, Disposal, Microwave, Oven/Range Built-In, Refrigerator, Washer, Dryer, Gas Range
Heating	Forced Air, Natural Gas
Cooling	Central Air
Fireplace	Yes
Fireplaces	One, Gas
Stories	One
Primary On Main	Yes

### Exterior

Lot Description	Standard Lot 6000-9999 SF, Irrigation Available, R.V. Parking, Sidewalks, Auto Sprinkler System, Full Sprinkler System, Pressurized Irrigation Sprinkler System
Roof	Architectural Style
Foundation	Crawl Space

### School Information

District	West Ada School District
----------	--------------------------

Elementary	Hillsdale
Middle	Victory
High	Mountain View

### **Additional Information**

Date Listed	September 25th, 2025
Days on Market	17
Zoning	R-8
HOA Fees	\$1,000
HOA Fees Freq.	Annually
Property Taxes	\$3,015
Tax Year	2024
Office	Keller Williams Realty Boise
Contact Info	broker@kwboise.com

### **Listing Details**

Listing Office	Keller Williams Realty Boise
----------------	------------------------------



IDX information is provided exclusively for consumers' personal, non-commercial use, and may not be used for any purpose other than to identify prospective properties consumers may be interested in purchasing. IMLS does not assume any liability for missing or inaccurate data. Information provided by IMLS is deemed reliable but not guaranteed.

Listing information last updated on October 12th, 2025 at 5:33am MDT