

\$749,000 - 2215 E Shady Glade Dr, Meridian

MLS® #98962842

\$749,000

3 Bedroom, 2.00 Bathroom, 2,343 sqft
Residential on 0.47 Acres

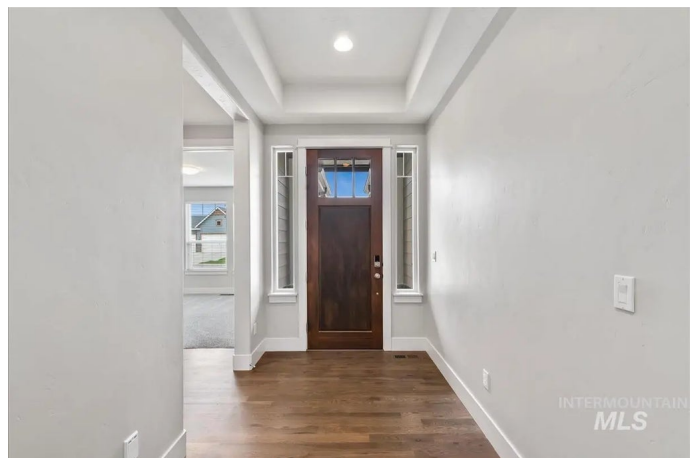
Sky Mesa, Meridian, ID

Beautiful single-level home on nearly a half-acre in highly desirable Sky Mesa! Incredibly spacious, this residence offers 3 bedrooms, 2 bathrooms, and a dedicated office with an open floor plan designed for seamless living and entertaining. The great room boasts gorgeous solid oak floors, two walls of windows framing the backyard, and a cozy gas fireplace, filling the space with natural light and warmth. The gourmet kitchen showcases white cabinetry, quartz countertops, and soaring 10' ceilings that create a bright, airy feel. Step outside to a massive backyard featuring a fully landscaped setting, an expansive covered patio, and plenty of room to design your dream outdoor oasis. A spacious 3-car garage and paved side parking provide ample space for a trailer or boat. Enjoy the unmatched lifestyle of Sky Mesa with two infinity-edge pools, a stylish clubhouse, sports courts and fields, neighborhood parks, scenic walking paths, and expansive open spaces designed for connection and relaxation.

Built in 2016

Essential Information

MLS® #	98962842
Price Per SQFT	\$320
Bedrooms	3
Bathrooms	2.00



Square Footage	2,343
Acres	0.47
Year Built	2016
Type	Residential
Sub-Type	Single Family Residence
Status	Active

Community Information

Address	2215 E Shady Glade Dr
Area	Meridian SE - 1000
Subdivision	Sky Mesa
City	Meridian
County	Ada
State	ID
Zip Code	83642

Amenities

Utilities	Sewer Connected, Cable Connected, Broadband Internet
Parking Spaces	3
Parking	Attached, Finished Driveway
# of Garages	3
Has Pool	Yes
Pool	Community, In Ground, Pool
Golf Course	N
Virtual Tour	https://sunnyskies.media/2215-E-Shady-Glade-Dr/idx

Interior

Interior Features	Bath-Master, Bed-Master Main Level, Split Bedroom, Den/Office, Great Room, Double Vanity, Central Vacuum Plumbed, Walk-In Closet(s), Breakfast Bar, Pantry, Kitchen Island, Quartz Counters
Appliances	Gas Water Heater, Tank Water Heater, Dishwasher, Disposal, Double Oven, Microwave, Oven/Range Built-In
Heating	Forced Air, Natural Gas
Cooling	Central Air
Fireplace	Yes
Fireplaces	One, Gas
Stories	One
Primary On Main	Yes

Exterior

Lot Description	10000 SF - .49 AC, Irrigation Available, Sidewalks, Auto Sprinkler System, Drip Sprinkler System, Full Sprinkler System, Pressurized Irrigation Sprinkler System
Roof	Composition

School Information

District	West Ada School District
Elementary	Hillsdale
Middle	Victory
High	Mountain View

Additional Information

Date Listed	September 25th, 2025
Days on Market	3
HOA Fees	\$1,000
HOA Fees Freq.	Annually
Property Taxes	\$3,369
Tax Year	2024
Office	Silvercreek Realty Group
Contact Info	broker@silvercreekrealty.com

Listing Details

Listing Office	Silvercreek Realty Group
----------------	--------------------------



IDX information is provided exclusively for consumers' personal, non-commercial use, and may not be used for any purpose other than to identify prospective properties consumers may be interested in purchasing. IMLS does not assume any liability for missing or inaccurate data. Information provided by IMLS is deemed reliable but not guaranteed.

Listing information last updated on October 12th, 2025 at 8:03am MDT