

# \$640,000 - 329 E Lombard Ln #naples, Eagle

MLS® #98962827

**\$640,000**

3 Bedroom, 3.00 Bathroom, 1,981 sqft

Residential on 0.07 Acres

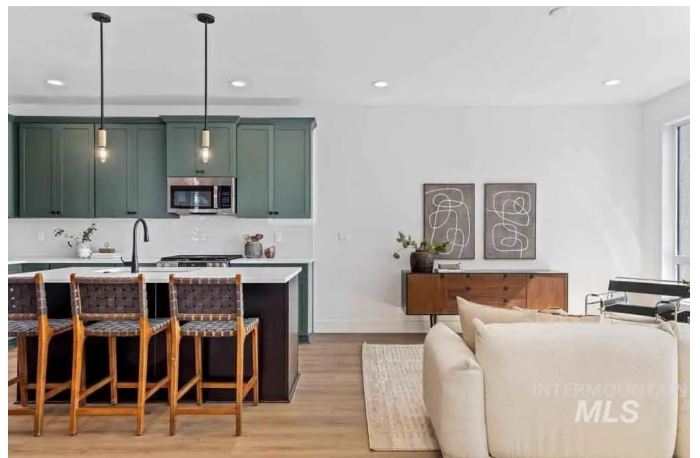
Molinari Park, Eagle, ID

Introducing Molinari Park - Luxury Townhomes Redefined. The very last Naples floorplan in Phase 1 features a sought-after main-level master suite with a spa-inspired bath, dual vanities, walk-in shower, and spacious closet. A gourmet kitchen with stainless steel appliances opens seamlessly to the living room and covered patio, while durable LVP flooring adds style and function. The main level also offers laundry hookups for added everyday convenience. Upstairs, enjoy a generous bonus room with oversized balcony, two bedrooms, a full laundry room, and a private office perfect for remote work. Abundant windows bring light into every corner of this open-concept design. Beyond your door, Molinari Park offers a lock-and-leave lifestyle with future on-site dining, coffee shops, lush landscaping, walking paths, a dog park, and an unbeatable downtown Eagle location.

Built in 2025

## Essential Information

MLS® #	98962827
Price Per SQFT	\$323
Bedrooms	3
Bathrooms	3.00
Square Footage	1,981
Acres	0.07
Year Built	2025



Type	Residential
Sub-Type	Townhouse
Status	Active

### Community Information

Address	329 E Lombard Ln #naples
Area	Eagle - 0900
Subdivision	Molinari Park
City	Eagle
County	Ada
State	ID
Zip Code	83616
Builder	Holmes Homes

### Amenities

Utilities	Sewer Connected
Parking Spaces	2
Parking	Attached, Finished Driveway
# of Garages	2
Golf Course	N

### Interior

Interior Features	Bath-Master, Guest Room, Great Room, Rec/Bonus, Two Master Bedrooms, Walk-In Closet(s), Pantry, Kitchen Island		
Appliances	Gas Water Heater, Tankless Water Heater, Dishwasher, Disposal, Oven/Range Freestanding		
Heating	Forced Air, Natural Gas		
Cooling	Central Air		
Stories	Two		
Primary On Main	Yes		
Two Primary Bedrooms	Yes		

### Exterior

Lot Description	Sm Lot 5999 SF, Sidewalks
Roof	Composition

### School Information

District	West Ada School District
Elementary	Eagle Hills

Middle	Eagle Middle
High	Eagle

### Additional Information

Date Listed	September 25th, 2025
Days on Market	3
Zoning	CBD
HOA Fees	\$150
HOA Fees Freq.	Monthly
New Construction	Yes
Property Taxes	\$534
Tax Year	2024
Office	Amherst Madison
Contact Info	mike@amherst-madison.com

### Listing Details

Listing Office	Amherst Madison
----------------	-----------------



IDX information is provided exclusively for consumers' personal, non-commercial use, and may not be used for any purpose other than to identify prospective properties consumers may be interested in purchasing. IMLS does not assume any liability for missing or inaccurate data. Information provided by IMLS is deemed reliable but not guaranteed.

Listing information last updated on October 12th, 2025 at 7:33pm MDT