

\$2,249,000 - 3402 N Mayberry Way, Eagle

MLS® #98962722

\$2,249,000

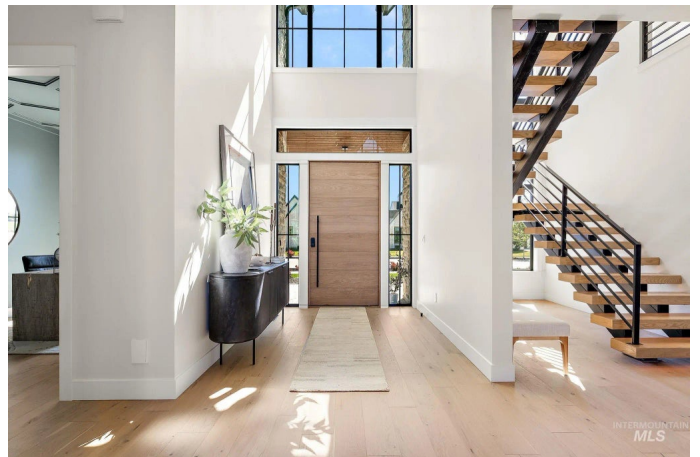
5 Bedroom, 4.00 Bathroom, 5,507 sqft

Residential on 0.32 Acres

Terra View, Eagle, ID

Discover this stunning custom home where modern elegance meets refined functionality. Nestled in one of Eagle's most exclusive neighborhoods, this architectural masterpiece offers soaring ceilings, a breathtaking floating staircase, flawless floors, and custom cabinetry with exquisite quartz finishes throughout. The chef's kitchen is a true showstopper- featuring a dramatic quartz island, WiFi-enabled appliances, and a sleek butler's pantry designed for both beauty and function. Whether entertaining or relaxing, the open-concept design flows effortlessly into spacious living areas filled with natural light. Retreat to a spa-like primary suite, complete with heated stone floors, a steam shower, luxurious soaking tub, private patio access, and expansive his & hers walk-in closets. Designed with versatility in mind, this home includes a private office, an upstairs secondary laundry, a spacious game room, and a hidden 623sq ft bonus room-ideal for a home gym, studio, theater, or even a 5th bedroom. Innovative smart-home features elevate daily living, including light switches with integrated camera intercoms and motion-activated under-cabinet lighting. The oversized 3-car garage is finished with durable epoxy flooring for a clean, high-end look. Step outside to your private oasis with tranquil pond views, built-in patio speakers, and seamless access to your own exclusive beach retreat.

Built in 2025



Essential Information

MLS® #	98962722
Price Per SQFT	\$408
Bedrooms	5
Bathrooms	4.00
Square Footage	5,507
Acres	0.32
Year Built	2025
Type	Residential
Sub-Type	Single Family Residence
Status	Active

Community Information

Address	3402 N Mayberry Way
Area	Eagle - 0900
Subdivision	Terra View
City	Eagle
County	Ada
State	ID
Zip Code	83616
Builder	Class Act Homes

Amenities

Utilities	Sewer Connected, Cable Connected, Broadband Internet
Parking Spaces	3
Parking	Attached, Finished Driveway
# of Garages	3
Is Waterfront	Yes
Waterfront	Waterfront, Pond Community
Has Pool	Yes
Pool	Community, In Ground, Pool
View	Yes
Golf Course	N
Virtual Tour	https://my.matterport.com/show/?m=xYRXcmoMGwn&brand=0&mls=1&

Interior

Interior Features	Bath-Master, Bed-Master Main Level, Guest Room, Split Bedroom, Den/Office, Great Room, Sauna/Steam Room, Rec/Bonus, Double Vanity, Walk-In Closet(s), Breakfast Bar, Pantry, Kitchen Island, Quartz
-------------------	---

	Counters
Appliances	Gas Water Heater, Dishwasher, Disposal, Double Oven, Microwave, Oven/Range Built-In, Refrigerator, Gas Range
Heating	Forced Air, Natural Gas
Cooling	Central Air
Fireplace	Yes
Fireplaces	One, Gas, Insert
Stories	Two
Primary On Main	Yes

Exterior

Lot Description	10000 SF - .49 AC, Garden, Sidewalks, Views, Auto Sprinkler System, Drip Sprinkler System, Full Sprinkler System, Pressurized Irrigation Sprinkler System
Roof	Composition
Foundation	Crawl Space

School Information

District	West Ada School District
Elementary	Star
Middle	Star
High	Eagle

Additional Information

Date Listed	September 25th, 2025
Days on Market	19
Zoning	MU-DA
HOA Fees	\$2,800
HOA Fees Freq.	Annually
New Construction	Yes
Property Taxes	\$722
Tax Year	2024
Structures	Storage Shed
Office	Silvercreek Realty Group
Contact Info	broker@silvercreekrealty.com

Listing Details

Listing Office	Silvercreek Realty Group
----------------	--------------------------



IDX information is provided exclusively for consumers' personal, non-commercial use, and may not be

used for any purpose other than to identify prospective properties consumers may be interested in purchasing. IMLS does not assume any liability for missing or inaccurate data. Information provided by IMLS is deemed reliable but not guaranteed.

Listing information last updated on October 14th, 2025 at 12:04pm MDT