

\$0 - 591 N Pembina Place, Eagle

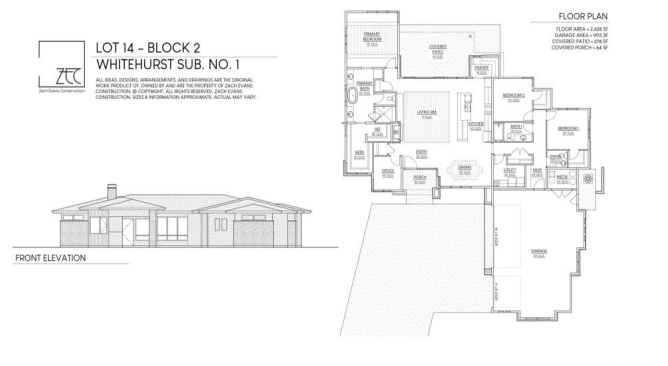
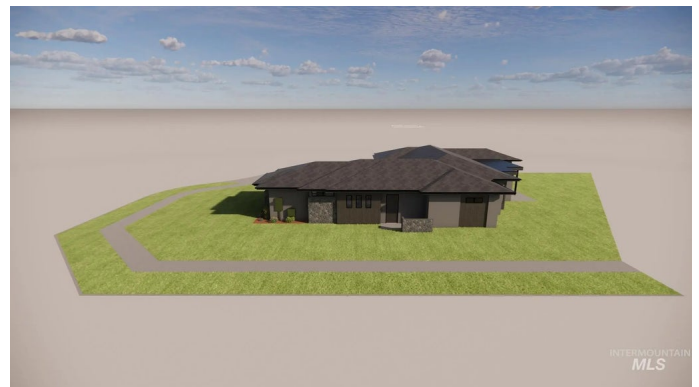
MLS® #98962656

\$0

3 Bedroom, 3.00 Bathroom, 2,428 sqft
Residential on 0.31 Acres

Whitehurst, Eagle, ID

3/17/26 Completion! Exquisite single-level residence in Whitehurst Neighborhood offers the perfect blend of modern luxury and serene suburban living. Situated on nearly a third of an acre in a peaceful cul-de-sac, this home provides ample space for outdoor enjoyment while maintaining tranquility. Step inside this 2,428 square foot haven, where an open-concept layout seamlessly connects the spacious living, dining, and kitchen areas—ideal for entertaining or everyday family life. The gourmet kitchen boasts top-of-the-line appliances, sleek quartz countertops, and a generous pantry, all complemented by elegant hardwood floors that flow throughout the main living spaces. The primary suite is a private retreat, complete with his-and-hers closets and a luxurious bath. Two additional bedrooms share a well-appointed bath, while a dedicated office provides the perfect spot for remote work or a quiet study. Practical features like a mudroom, utility area, and mechanical room add convenience without compromising on aesthetics. The home's modern front elevation with stone accents and a welcoming porch sets a sophisticated tone. The oversized 995 square foot garage offers side-entry access and plenty of room for vehicles, storage, or a workshop. Relax on the expansive 279 square foot covered patio, perfect for al fresco dining or enjoying Idaho's evenings. Built by Zach Evans Construction.



Built in 2026

Essential Information

MLS® #	98962656
Bedrooms	3
Bathrooms	3.00
Square Footage	2,428
Acres	0.31
Year Built	2026
Type	Residential
Sub-Type	Single Family Residence
Status	No Price New Construction

Community Information

Address	591 N Pembina Place
Area	Eagle - 0900
Subdivision	Whitehurst
City	Eagle
County	Ada
State	ID
Zip Code	83616
Builder	Zach Evans Construction

Amenities

Utilities	Sewer Connected, Cable Connected, Broadband Internet
Parking Spaces	3
Parking	Attached, Electric Vehicle Charging Station(s), Finished Driveway
# of Garages	3
Golf Course	N

Interior

Interior Features	Bath-Master, Bed-Master Main Level, Split Bedroom, Den/Office, Great Room, Double Vanity, Walk-In Closet(s), Breakfast Bar, Pantry, Kitchen Island, Quartz Counters
Appliances	Gas Water Heater, Dishwasher, Disposal, Double Oven, Microwave, Oven/Range Built-In, Refrigerator
Heating	Forced Air, Natural Gas
Cooling	Central Air
Fireplace	Yes

Fireplaces	One, Gas
Stories	One
Primary On Main	Yes

Exterior

Lot Description	10000 SF - .49 AC, Sidewalks, Auto Sprinkler System, Drip Sprinkler System, Full Sprinkler System, Pressurized Irrigation Sprinkler System
Roof	Composition
Foundation	Crawl Space

School Information

District	West Ada School District
Elementary	Eagle
Middle	Eagle Middle
High	Eagle

Additional Information

Date Listed	September 24th, 2025
HOA Fees	\$950
HOA Fees Freq.	Annually
New Construction	Yes
Tax Year	2025
Office	Better Homes & Gardens 43North
Contact Info	jeff@43re.com

Listing Details

Listing Office	Better Homes & Gardens 43North
----------------	--------------------------------



IDX information is provided exclusively for consumers' personal, non-commercial use, and may not be used for any purpose other than to identify prospective properties consumers may be interested in purchasing. IMLS does not assume any liability for missing or inaccurate data. Information provided by IMLS is deemed reliable but not guaranteed.

Listing information last updated on October 12th, 2025 at 7:33pm MDT