

\$449,900 - 10306 Fallow Field St., Nampa

MLS® #98962586

\$449,900

3 Bedroom, 2.00 Bathroom, 1,740 sqft
Residential on 0.17 Acres

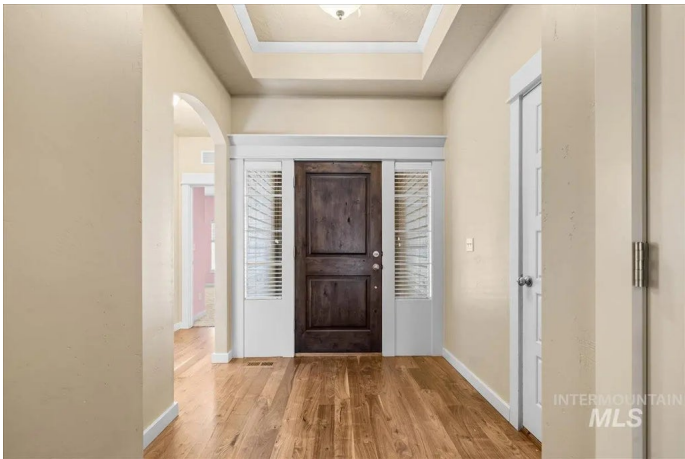
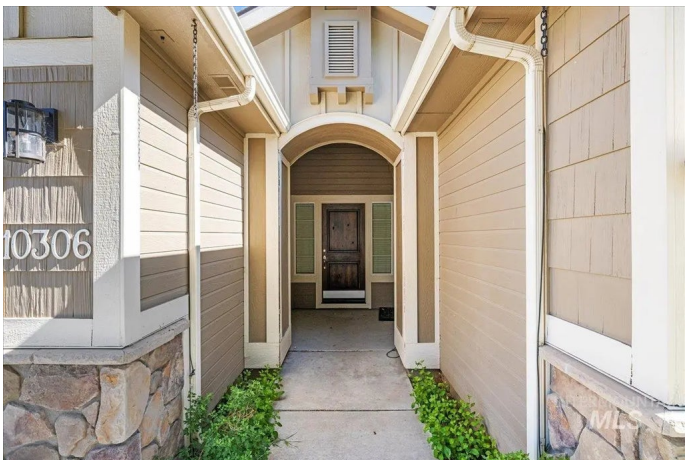
Castle Peak, Nampa, ID

Welcome to this thoughtfully updated 3-bedroom, 2-bathroom home offering 1,740 square feet of comfortable living space in a super convenient location, just 7 minutes to the freeway and 5 minutes to St. Luke’s Hospital in Nampa. Inside, you'll find fresh new carpet and refinished hard flooring throughout, giving the entire home a clean, updated feel. The exterior was professionally painted in June 2020 for great curb appeal, and a shed was added in February 2023 for extra storage. Key upgrades include a newer washer and dryer (July 2022), stove (January 2021), microwave (July 2020), and a brand-new furnace installed in December 2024. The spacious primary suite features Hunter blackout blinds, perfect for relaxing and getting a great night’s sleep. This home has been well cared for and is truly move-in ready, come see it for yourself!

Built in 2010

Essential Information

MLS® #	98962586
Price Per SQFT	\$259
Bedrooms	3
Bathrooms	2.00
Square Footage	1,740
Acres	0.17
Year Built	2010
Type	Residential



Sub-Type	Single Family Residence
Status	Active

Community Information

Address	10306 Fallow Field St.
Area	Nampa NE (87) - 1250
Subdivision	Castle Peak
City	Nampa
County	Canyon
State	ID
Zip Code	83687

Amenities

Utilities	Sewer Connected
Parking Spaces	3
Parking	Attached, RV Access/Parking, Finished Driveway
# of Garages	3
Has Pool	Yes
Pool	Community
RV/Boat Parking	Yes
Golf Course	N

Interior

Interior Features	Bath-Master, Bed-Master Main Level, Guest Room, Great Room, Walk-In Closet(s), Breakfast Bar, Pantry, Kitchen Island
Appliances	Gas Water Heater, Dishwasher, Disposal, Microwave, Oven/Range Freestanding
Heating	Forced Air
Cooling	Central Air
Fireplace	Yes
Fireplaces	One
Stories	One
Primary On Main	Yes

Exterior

Lot Description	Standard Lot 6000-9999 SF, Irrigation Available, R.V. Parking, Sidewalks
Roof	Composition

School Information

District	Vallivue School District #139
Elementary	Desert Springs
Middle	Sage Valley
High	Ridgevue

Additional Information

Date Listed	September 23rd, 2025
Days on Market	3
HOA Fees	\$550
HOA Fees Freq.	Annually
Property Taxes	\$3,343
Tax Year	2024
Office	Aspire Realty Group
Contact Info	jamesonshaw1@gmail.com

Listing Details

Listing Office	Aspire Realty Group
----------------	---------------------



IDX information is provided exclusively for consumers' personal, non-commercial use, and may not be used for any purpose other than to identify prospective properties consumers may be interested in purchasing. IMLS does not assume any liability for missing or inaccurate data. Information provided by IMLS is deemed reliable but not guaranteed.

Listing information last updated on October 14th, 2025 at 6:18pm MDT