

# \$312,000 - 105 E Waterbury Ln, Meridian

MLS® #98962472

**\$312,000**

2 Bedroom, 2.00 Bathroom, 936 sqft

Residential on 0.04 Acres

Heron Brook, Meridian, ID

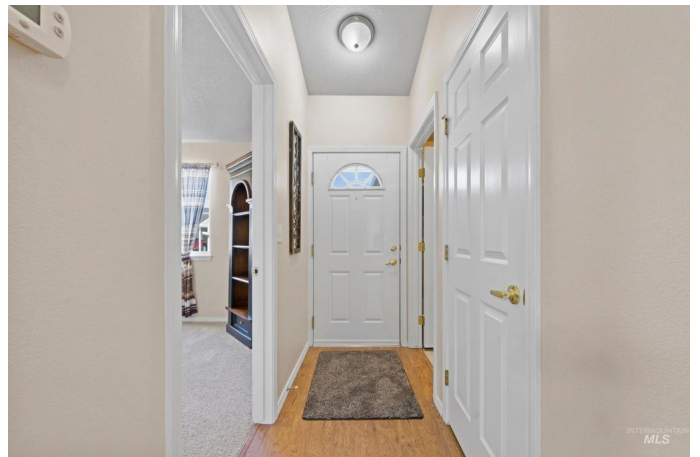
Welcome to this charming single-level townhouse located in a desirable 55+ community. Recently updated with fresh paint, new carpet, and brand-new appliances, this home is move-in ready. The kitchen features modern finishes, including a stainless-steel Bosch dishwasher, adding both style and function. Enjoy low maintenance living with the HOA taking care of landscaping and snow removal year-round. The community clubhouse offers the perfect space for social gatherings, events, and connecting with neighbors. This is an ideal opportunity to enjoy comfort, convenience, and community in a beautifully maintained setting.

Built in 2002

## Essential Information

MLS® #	98962472
Price Per SQFT	\$333
Bedrooms	2
Bathrooms	2.00
Square Footage	936
Acres	0.04
Year Built	2002
Type	Residential
Sub-Type	Townhouse
Status	Active

## Community Information



Address	105 E Waterbury Ln
Area	Meridian NW - 1030
Subdivision	Heron Brook
City	Meridian
County	Ada
State	ID
Zip Code	83646

### **Amenities**

Utilities	Cable Connected, Broadband Internet
Parking Spaces	1
Parking	Carport
Golf Course	N
Virtual Tour	<a href="https://view.spiro.media/order/01e638c5-f4a3-474b-2b28-08ddf68a5122?branding=false">https://view.spiro.media/order/01e638c5-f4a3-474b-2b28-08ddf68a5122?branding=false</a>

### **Interior**

Interior Features	Bath-Master, Bed-Master Main Level, Walk-In Closet(s), Breakfast Bar, Laminate Counters
Appliances	Gas Water Heater, Dishwasher, Microwave, Oven/Range Freestanding, Refrigerator
Heating	Forced Air, Natural Gas
Cooling	Central Air
Fireplace	Yes
Fireplaces	Gas
Stories	One
Primary On Main	Yes

### **Exterior**

Lot Description	Sm Lot 5999 SF, Auto Sprinkler System, Drip Sprinkler System, Full Sprinkler System, Irrigation Sprinkler System
Roof	Composition

### **School Information**

District	West Ada School District
Elementary	River Valley
Middle	Meridian Middle
High	Meridian

### **Additional Information**

Date Listed	September 22nd, 2025
Days on Market	3
Zoning	r-40
HOA Fees	\$350
HOA Fees Freq.	Quarterly
Property Taxes	\$609
Tax Year	2024
Office	Keller Williams Realty Boise
Contact Info	broker@kwboise.com

## **Listing Details**

Listing Office      Keller Williams Realty Boise



IDX information is provided exclusively for consumers' personal, non-commercial use, and may not be used for any purpose other than to identify prospective properties consumers may be interested in purchasing. IMLS does not assume any liability for missing or inaccurate data. Information provided by IMLS is deemed reliable but not guaranteed.

Listing information last updated on October 12th, 2025 at 9:33pm MDT