

# \$457,400 - 2022 S Latah St, Boise

MLS® #98962446

**\$457,400**

3 Bedroom, 2.00 Bathroom, 1,520 sqft

Residential on 0.15 Acres

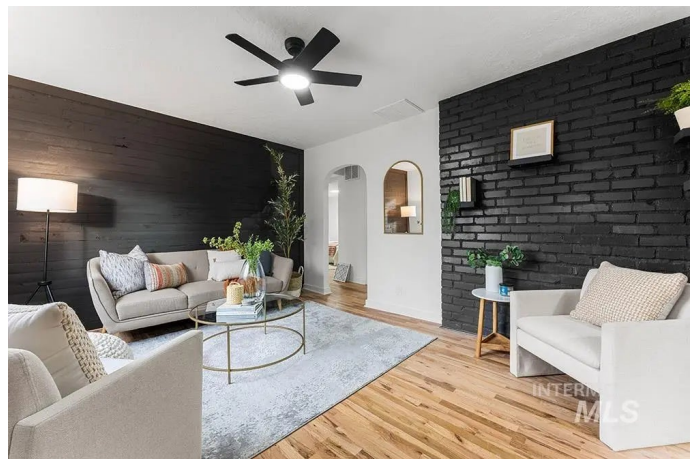
Steins Add, Boise, ID

Beautifully remodeled single-level home set in the heart of the Bench! Originally built in the 1950s, this charming residence has been revitalized creating a stylish, move-in-ready home in a fabulous location. The floorplan features original hardwood floors, large picture windows, and bold black accent walls. The remodel includes a stunning kitchen transformation w/ quartz countertops, stylish backsplash, and new stainless steel appliances. Bathrooms have been fully modernized, while new trim, doors, light fixtures, paint, and updated utilities bring a fresh feel to every corner of the home. The large bonus room offers incredible versatility, perfect as a flex space to suit your lifestyle or opportunity to use as a grand primary suite or potential ADU, complete with two exterior access points and a nearby bathroom. The backyard provides ample space to create your dream outdoor setting with no HOA restrictions. Located just minutes from the Hillcrest Country Club and downtown!

Built in 1948

## Essential Information

MLS® #	98962446
Price Per SQFT	\$301
Bedrooms	3
Bathrooms	2.00
Square Footage	1,520



Acres	0.15
Year Built	1948
Type	Residential
Sub-Type	Single Family Residence
Status	Active

### **Community Information**

Address	2022 S Latah St
Area	Boise Bench - 0400
Subdivision	Steins Add
City	Boise
County	Ada
State	ID
Zip Code	83705

### **Amenities**

Utilities	Sewer Connected, Cable Connected, Broadband Internet
Parking Spaces	1
Parking	Attached, Alley Access
# of Garages	1
Golf Course	N

### **Interior**

Interior Features	Bed-Master Main Level, Family Room, Rec/Bonus, Quartz Counters
Appliances	Gas Water Heater, Tank Water Heater, Disposal, Microwave, Oven/Range Freestanding
Heating	Forced Air, Natural Gas, Wood
Cooling	Central Air, Ductless/Mini Split
Fireplace	Yes
Fireplaces	Wood Burning Stove
Stories	One
Primary On Main	Yes

### **Exterior**

Lot Description	Standard Lot 6000-9999 SF, Sidewalks
Roof	Composition

### **School Information**

District	Boise School District #1
----------	--------------------------

Elementary	Whitney
Middle	South (Boise)
High	Borah

### **Additional Information**

Date Listed	September 22nd, 2025
Days on Market	3
Zoning	R-1C
Property Taxes	\$2,080
Tax Year	2024
Office	Amherst Madison
Contact Info	mike@amherst-madison.com

### **Listing Details**

Listing Office	Amherst Madison
----------------	-----------------



IDX information is provided exclusively for consumers' personal, non-commercial use, and may not be used for any purpose other than to identify prospective properties consumers may be interested in purchasing. IMLS does not assume any liability for missing or inaccurate data. Information provided by IMLS is deemed reliable but not guaranteed.

Listing information last updated on October 12th, 2025 at 9:33pm MDT