

\$409,990 - 3860 E Syracuse St, Nampa

MLS® #98962435

\$409,990

3 Bedroom, 2.00 Bathroom, 1,447 sqft

Residential on 0.14 Acres

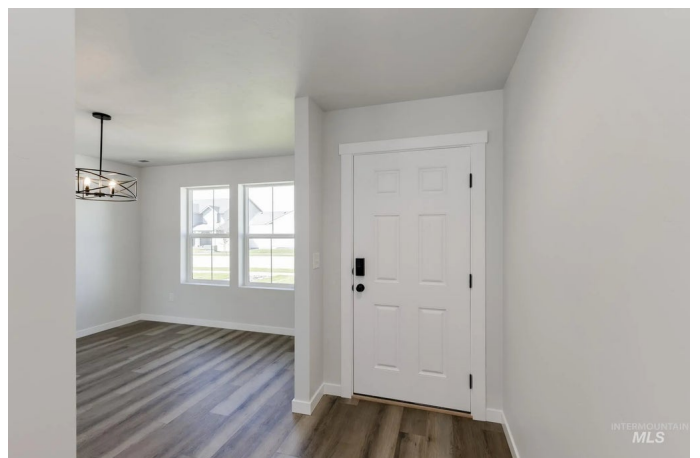
New York Landing, Nampa, ID

Fall in Love with Low Rates! Promotional rate as low as 2.99%. This brand new home located in vibrant Nampa, Idaho welcomes you with open arms. The Chandler 1447 is the perfect house for anyone who is looking for a cozy, comfortable atmosphere. The primary suite is situated at the rear of the home and contains an en suite bathroom and walk-in closet, perfect for a good night's sleep or a lazy weekend morning. The highlight of the house, however, is the large living/entertaining space. With an open floor plan, you'll have plenty of room to curl up with a book, watch a movie, host a dinner party, or just relax. The kitchen is equipped with all the modern amenities to rediscover the joy of cooking. The outdoor spaces are perfect for hosting barbeques on warm summer days or just enjoying a morning cup of coffee in the fresh air. Photos are similar. All selections are subject to change without notice, please call to verify.

Built in 2025

Essential Information

MLS® #	98962435
Price Per SQFT	\$283
Bedrooms	3
Bathrooms	2.00
Square Footage	1,447
Acres	0.14
Year Built	2025



Type	Residential
Sub-Type	Single Family Residence
Status	Active

Community Information

Address	3860 E Syracuse St
Area	Nampa South (86) - 1260
Subdivision	New York Landing
City	Nampa
County	Canyon
State	ID
Zip Code	83686
Builder	CBH Homes

Amenities

Utilities	Sewer Connected
Parking Spaces	2
Parking	Attached
# of Garages	2
Golf Course	N
Virtual Tour	https://my.matterport.com/show/?m=YCaScGA3VyU&brand=0

Interior

Interior Features	Bath-Master, Bed-Master Main Level, Great Room, Double Vanity, Breakfast Bar, Pantry, Kitchen Island
Appliances	Gas Water Heater, Dishwasher, Disposal, Microwave, Oven/Range Freestanding
Heating	Forced Air, Natural Gas
Cooling	Central Air
Stories	One
Primary On Main	Yes

Exterior

Lot Description	Standard Lot 6000-9999 SF, Sidewalks, Pressurized Irrigation Sprinkler System
Roof	Composition

School Information

District	Nampa School District #131
Elementary	Ronald Reagan

Middle	East Valley Mid
High	Columbia

Additional Information

Date Listed	September 22nd, 2025
Days on Market	3
HOA Fees	\$700
HOA Fees Freq.	Annually
New Construction	Yes
Tax Year	2025
Office	CBH Sales & Marketing Inc
Contact Info	tarak@cbhhomes.com

Listing Details

Listing Office	CBH Sales & Marketing Inc
----------------	---------------------------



IDX information is provided exclusively for consumers' personal, non-commercial use, and may not be used for any purpose other than to identify prospective properties consumers may be interested in purchasing. IMLS does not assume any liability for missing or inaccurate data. Information provided by IMLS is deemed reliable but not guaranteed.

Listing information last updated on October 14th, 2025 at 10:03pm MDT