

# \$399,990 - 18346 N Trumpet Lily Ave, Nampa

MLS® #98962406

**\$399,990**

3 Bedroom, 2.00 Bathroom, 1,120 sqft

Residential on 0.16 Acres

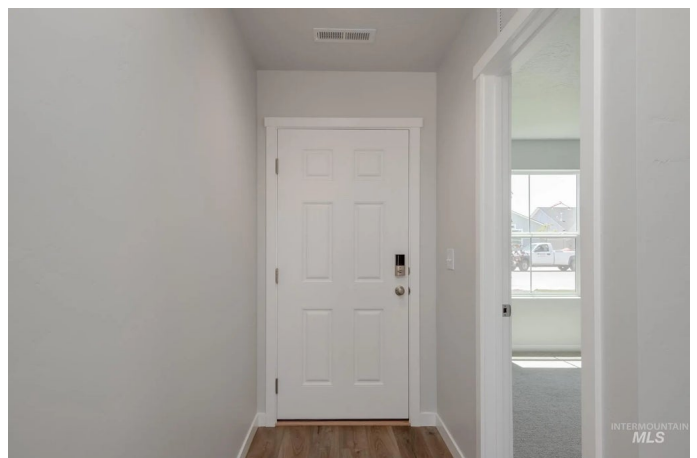
Solano Place, Nampa, ID

Fall in Love with Low Rates! Promotional rate as low as 2.99%. Feel enriched in your brand new home located in Nampa, Idaho! The Lily 1120 is adorable and bursting with charm! This thoughtful floor plan flows seamlessly through the home to deliver a cozy living experience. Three bedrooms situated around the home are designed to provide a secluded getaway to everyone. The centrally located living room, kitchen, and dining room are the heart of the home for lounging or entertaining. The spacious kitchen boasts ample counter space and modern appliances, making meal prep a breeze. The primary suite provides an en suite bathroom and large closet. Enjoy easy access to the back patio from the dining room and make the most of the pleasant Idaho weather. With its efficient design and inviting spaces, the Lily 1120 offers both comfort and functionality. It's the perfect place to call home. Potential RV parking available. Photos are similar. All selections are subject to change without notice, please call to verify.

Built in 2025

## Essential Information

MLS® #	98962406
Price Per SQFT	\$357
Bedrooms	3
Bathrooms	2.00
Square Footage	1,120



Acres	0.16
Year Built	2025
Type	Residential
Sub-Type	Single Family Residence
Status	Active

### Community Information

Address	18346 N Trumpet Lily Ave
Area	Caldwell NW - 1275
Subdivision	Solano Place
City	Nampa
County	Canyon
State	ID
Zip Code	83687
Builder	CBH Homes

### Amenities

Utilities	Sewer Connected
Parking Spaces	2
Parking	Attached
# of Garages	2
Golf Course	N
Virtual Tour	<a href="https://my.matterport.com/show/?m=SPSVoo9Bwxq&amp;mls=1">https://my.matterport.com/show/?m=SPSVoo9Bwxq&amp;mls=1</a>

### Interior

Interior Features	Bath-Master, Bed-Master Main Level, Split Bedroom, Great Room, Walk-In Closet(s), Breakfast Bar, Pantry
Appliances	Gas Water Heater, Dishwasher, Disposal, Microwave, Oven/Range Freestanding
Heating	Forced Air, Natural Gas
Cooling	Central Air
Stories	One
Primary On Main	Yes

### Exterior

Lot Description	Standard Lot 6000-9999 SF, Sidewalks, Auto Sprinkler System, Partial Sprinkler System, Pressurized Irrigation Sprinkler System
Roof	Composition

### School Information

District	Vallivue School District #139
Elementary	East Canyon
Middle	Sage Valley
High	Ridgevue

### **Additional Information**

Date Listed	September 22nd, 2025
Days on Market	3
HOA Fees	\$545
HOA Fees Freq.	Annually
New Construction	Yes
Tax Year	2025
Office	CBH Sales & Marketing Inc
Contact Info	tarak@cbhhomes.com

### **Listing Details**

Listing Office	CBH Sales & Marketing Inc
----------------	---------------------------



IDX information is provided exclusively for consumers' personal, non-commercial use, and may not be used for any purpose other than to identify prospective properties consumers may be interested in purchasing. IMLS does not assume any liability for missing or inaccurate data. Information provided by IMLS is deemed reliable but not guaranteed.

Listing information last updated on October 14th, 2025 at 12:33pm MDT