

\$494,990 - 898 N Mirror Creek Way, Meridian

MLS® #98962402

\$494,990

4 Bedroom, 3.00 Bathroom, 2,110 sqft

Residential on 0.10 Acres

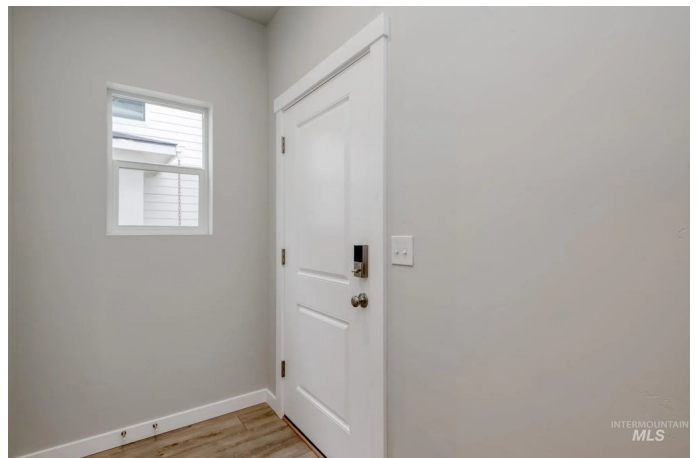
Dutton Place, Meridian, ID

Fall in Love with Low Rates! Promotional rate as low as 2.99%. Enter into a brand new home in Meridian, Idaho and enjoy its benefits and stress free living! A home with all the comforts you could need awaits you at the Atwood 2110! An open concept layout on the main level, complete with a chef's kitchen that includes stainless steel appliances and stylish solid surface countertops, adding both functionality and aesthetics to the kitchen. A welcoming main-level bedroom awaits, perfect for visiting family, a playroom, or creative space. Upstairs, you will find 3 bedrooms and an additional centralized loft space - perfect for creating your own retreat. The primary suite includes an ample walk-in closet and a grand en suite bath with a dual vanity. The home features expansive windows that let in natural light, creating a bright and welcoming atmosphere throughout. Photos are similar. All selections are subject to change without notice, please call to verify.

Built in 2025

Essential Information

MLS® #	98962402
Price Per SQFT	\$235
Bedrooms	4
Bathrooms	3.00
Square Footage	2,110
Acres	0.10



Year Built	2025
Type	Residential
Sub-Type	Single Family Residence
Status	Active

Community Information

Address	898 N Mirror Creek Way
Area	Meridian NW - 1030
Subdivision	Dutton Place
City	Meridian
County	Ada
State	ID
Zip Code	83642
Builder	CBH Homes

Amenities

Utilities	Sewer Connected
Parking Spaces	2
Parking	Attached
# of Garages	2
Golf Course	N
Virtual Tour	https://my.matterport.com/show/?m=497kga3tG6L&mls=1

Interior

Interior Features	Bath-Master, Rec/Bonus, Double Vanity, Walk-In Closet(s), Pantry, Kitchen Island, Solid Surface Counters
Appliances	Gas Water Heater, Dishwasher, Disposal, Microwave, Oven/Range Freestanding
Heating	Forced Air, Natural Gas
Cooling	Central Air
Stories	Two

Exterior

Lot Description	Sm Lot 5999 SF, Sidewalks, Auto Sprinkler System, Partial Sprinkler System, Pressurized Irrigation Sprinkler System
Roof	Composition

School Information

District	West Ada School District
Elementary	Chaparral

Middle	Meridian Middle
High	Meridian

Additional Information

Date Listed	September 22nd, 2025
Days on Market	3
HOA Fees	\$680
HOA Fees Freq.	Annually
New Construction	Yes
Tax Year	2025
Office	CBH Sales & Marketing Inc
Contact Info	tarak@cbhhomes.com

Listing Details

Listing Office	CBH Sales & Marketing Inc
----------------	---------------------------



IDX information is provided exclusively for consumers' personal, non-commercial use, and may not be used for any purpose other than to identify prospective properties consumers may be interested in purchasing. IMLS does not assume any liability for missing or inaccurate data. Information provided by IMLS is deemed reliable but not guaranteed.

Listing information last updated on October 12th, 2025 at 9:33pm MDT