

\$995,000 - 6141 E Toon Ln, Kuna

MLS® #98962281

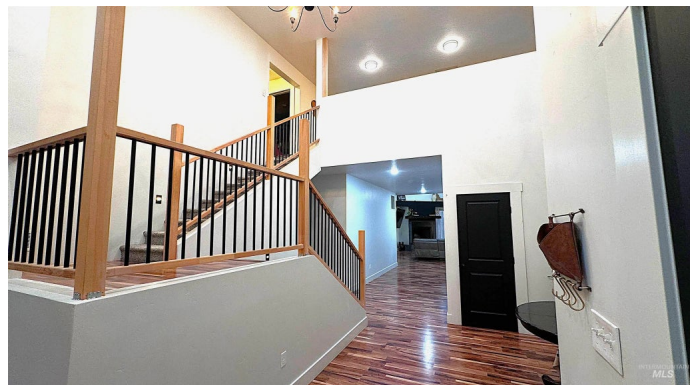
\$995,000

7 Bedroom, 5.00 Bathroom, 4,216 sqft

Residential on 5.09 Acres

Cloverdale Ridg, Kuna, ID

This incredible home sits on 5.09 acres. Features an open floor plan with vaulted ceilings, a great kitchen with a large walk-in pantry, a loft area, solar panels to help with heating costs, dual HVAC systems, and a drive-thru garage. Corner fireplaces in the living room and the master bedroom. Beautiful en suite with a walk-in closet. Dog room with 3-bed areas, bathing area, and access door to the side yard. 2 additional rooms upstairs include a full bath and walk-in closets, they can be used as bedrooms, bonus rooms, playrooms, mancaves, or offices. Build an ADU or shop on the rear 2.5 acres, or use it as a storage area for RVs, travel trailers, or boats, for additional income. Lots of possibilities. Tons of firewood that you can either sell or keep for personal use for at least 3 to 4 winters. Pictures do not do this home justice. Call to set up your appointment to see this beauty today!



Built in 2022

Essential Information

MLS® #	98962281
Price Per SQFT	\$236
Bedrooms	7
Bathrooms	5.00
Square Footage	4,216
Acres	5.09
Year Built	2022

Type	Residential
Sub-Type	Single Family w/ Acreage
Status	Active

Community Information

Address	6141 E Toon Ln
Area	Kuna - 1100
Subdivision	Cloverdale Ridg
City	Kuna
County	Ada
State	ID
Zip Code	83634

Amenities

Utilities	Cable Connected
Parking Spaces	6
Parking	Attached, Garage (Drive Through Doors), RV Access/Parking
# of Garages	6
RV/Boat Parking	Yes
Horses	Yes
Golf Course	N

Interior

Interior Features	Bed-Master Main Level, Split Bedroom, Double Vanity, Walk-In Closet(s), Breakfast Bar, Pantry, Laminate Counters, Wood/Butcher Block Counters
Appliances	Electric Water Heater, Dishwasher, Disposal, Microwave, Oven/Range Built-In, Refrigerator
Heating	Forced Air
Cooling	Central Air
Fireplace	Yes
Fireplaces	Wood Burning Stove
Stories	Two
Primary On Main	Yes

Exterior

Lot Description	5 - 9.9 Acres, Garden, Horses, R.V. Parking, Chickens, Manual Sprinkler System
Roof	Composition

School Information

District	Kuna School District #3
Elementary	Hubbard
Middle	Kuna
High	Kuna

Additional Information

Date Listed	September 19th, 2025
Days on Market	3
Property Taxes	\$3,907
Tax Year	2023
Structures	Corral(s), Storage Shed
Office	LPT Realty
Contact Info	greg.wolf@lpt.com

Listing Details

Listing Office	LPT Realty
----------------	------------



IDX information is provided exclusively for consumers' personal, non-commercial use, and may not be used for any purpose other than to identify prospective properties consumers may be interested in purchasing. IMLS does not assume any liability for missing or inaccurate data. Information provided by IMLS is deemed reliable but not guaranteed.

Listing information last updated on October 12th, 2025 at 11:48pm MDT