

\$1,150,000 - 909 E Joplin Lane, Eagle

MLS® #98962280

\$1,150,000

3 Bedroom, 4.00 Bathroom, 2,862 sqft

Residential on 0.08 Acres

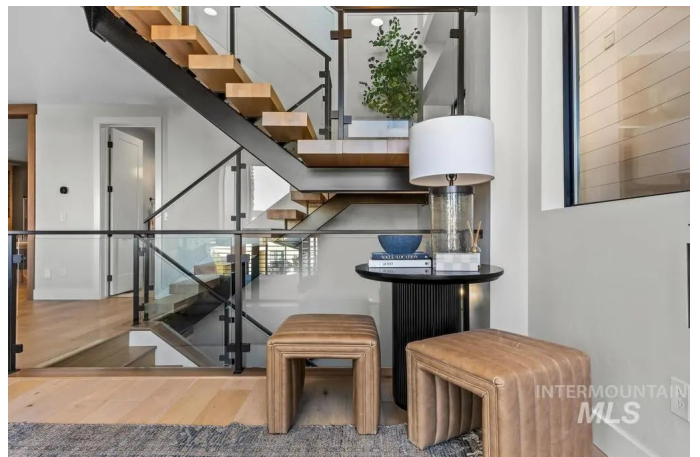
Lakemoor, Eagle, ID

Experience luxury living in the gated Lakemoor community with this 2,862 sq ft modern masterpiece showcasing sleek design, designer finishes, and over 450 sq ft of outdoor space with stunning Boise River and foothill views. The gourmet kitchen impresses with a Thermador appliance package, custom cabinetry, white oak beam casing, handmade Moroccan tile backsplash, and quartz countertops, while the baths feature tile flooring, fully tiled showers, and high-end fixtures. Interior highlights include engineered hardwood floors, a solid oak floating staircase, 8â€™™ doors, Visual Comfort designer lighting, a 40â€™• linear fireplace wrapped in stacked stone & WiFi/audio systems. Marvin black-framed windows and multi-point sliding glass doors bring in abundant natural light, complemented by Montana Timber soffits with balcony heaters, contemporary railings, and full landscaping. The oversized garage offers an 18â€™™ Amarr modern door, epoxy floors, and 877 sq ft of parking and storage.

Built in 2023

Essential Information

MLS® #	98962280
Price Per SQFT	\$402
Bedrooms	3
Bathrooms	4.00
Square Footage	2,862



Acres	0.08
Year Built	2023
Type	Residential
Sub-Type	Single Family Residence
Status	Active

Community Information

Address	909 E Joplin Lane
Area	Eagle - 0900
Subdivision	Lakemoor
City	Eagle
County	Ada
State	ID
Zip Code	83616
Builder	Ironhaven

Amenities

Utilities	Sewer Connected
Parking Spaces	2
Parking	Attached, Finished Driveway
# of Garages	2
Waterfront	Pond Community
Gated	Yes
View	Yes
Golf Course	N

Interior

Interior Features	Bath-Master, Den/Office, Double Vanity, Central Vacuum Plumbed, Walk-In Closet(s), Pantry, Kitchen Island, Quartz Counters
Appliances	Gas Water Heater, Dishwasher, Microwave, Oven/Range Built-In, Refrigerator, Gas Range
Heating	Forced Air, Natural Gas
Cooling	Central Air
Fireplace	Yes
Fireplaces	One, Gas
Stories	Two

Exterior

Lot Description	Sm Lot 5999 SF, Sidewalks, Views, Cul-De-Sac, Drip Sprinkler System,
-----------------	--

Partial Sprinkler System, Pressurized Irrigation Sprinkler System

Roof

Tile, Architectural Style

School Information

District West Ada School District

Elementary Andrus

Middle Eagle Middle

High Eagle

Additional Information

Date Listed September 19th, 2025

Days on Market 7

HOA Fees \$520

HOA Fees Freq. Quarterly

Property Taxes \$4,665

Tax Year 2025

Office Amherst Madison

Contact Info mike@amherst-madison.com

Listing Details

Listing Office Amherst Madison



IDX information is provided exclusively for consumers' personal, non-commercial use, and may not be used for any purpose other than to identify prospective properties consumers may be interested in purchasing. IMLS does not assume any liability for missing or inaccurate data. Information provided by IMLS is deemed reliable but not guaranteed.

Listing information last updated on October 12th, 2025 at 11:48pm MDT