

\$834,900 - 5308 S Hill Farm Avenue, Meridian

MLS® #98962153

\$834,900

5 Bedroom, 3.00 Bathroom, 3,028 sqft

Residential on 0.20 Acres

Century Farm, Meridian, ID

Custom designed modern farmhouse built by Todd Campbell Custom Homes. Large 42 Ft RV Bay with 12 Ft door. Magazine worthy design and details throughout. Gourmet Kitchen with double ovens, custom ceiling height cabinetry, full wall tile backsplash and open shelving. Main level master suite features large tile walk in shower, freestanding tub, and separate vanities. Large covered patio with East facing backyard. Located in Century Farm Community with elementary school, YMCA, 10 acre park, pools & more!

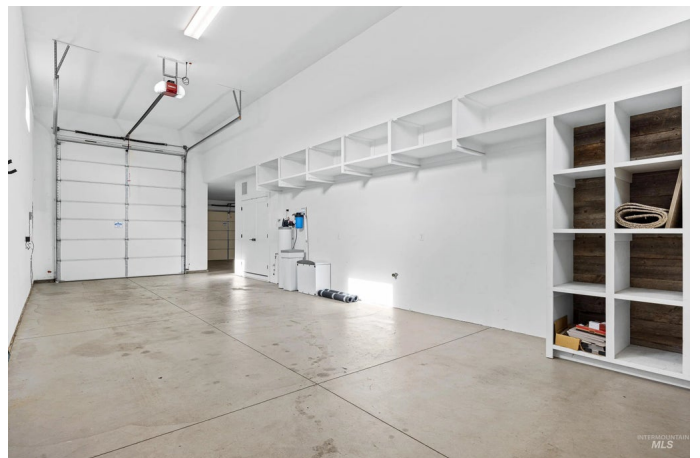
Built in 2016

Essential Information

MLS® #	98962153
Price Per SQFT	\$276
Bedrooms	5
Bathrooms	3.00
Square Footage	3,028
Acres	0.20
Year Built	2016
Type	Residential
Sub-Type	Single Family Residence
Status	Active

Community Information

Address	5308 S Hill Farm Avenue
Area	Meridian SE - 1000
Subdivision	Century Farm



City	Meridian
County	Ada
State	ID
Zip Code	83642
Builder	Todd Campbell

Amenities

Utilities	Sewer Connected, Cable Connected, Broadband Internet
Parking Spaces	4
Parking	Attached, RV Access/Parking, Finished Driveway
# of Garages	4
Has Pool	Yes
Pool	Community, In Ground, Pool
RV/Boat Parking	Yes
Golf Course	N
Virtual Tour	https://my.matterport.com/show/?m=YtoyZiqfrBy&brand=0

Interior

Interior Features	Bath-Master, Bed-Master Main Level, Split Bedroom, Den/Office, Great Room, Rec/Bonus, Double Vanity, Central Vacuum Plumbed, Walk-In Closet(s), Loft, Breakfast Bar, Pantry, Kitchen Island, Quartz Counters
Appliances	Gas Water Heater, Dishwasher, Disposal, Double Oven, Microwave, Water Softener Owned, Gas Range
Heating	Forced Air, Natural Gas
Cooling	Central Air
Fireplace	Yes
Fireplaces	One, Gas
Stories	Two
Primary On Main	Yes

Exterior

Lot Description	Standard Lot 6000-9999 SF, Garden, Irrigation Available, R.V. Parking, Sidewalks, Auto Sprinkler System, Full Sprinkler System, Pressurized Irrigation Sprinkler System
Windows	Skylight(s)
Roof	Composition
Foundation	Crawl Space

School Information

District	West Ada School District
----------	--------------------------

Elementary	Hillsdale
Middle	Lake Hazel
High	Mountain View

Additional Information

Date Listed	September 19th, 2025
Days on Market	21
Zoning	R-8
HOA Fees	\$600
HOA Fees Freq.	Annually
Property Taxes	\$2,787
Tax Year	2024
Structures	Storage Shed
Office	John L Scott Downtown
Contact Info	craiggroves@johnlscott.com

Listing Details

Listing Office	John L Scott Downtown
----------------	-----------------------



IDX information is provided exclusively for consumers' personal, non-commercial use, and may not be used for any purpose other than to identify prospective properties consumers may be interested in purchasing. IMLS does not assume any liability for missing or inaccurate data. Information provided by IMLS is deemed reliable but not guaranteed.

Listing information last updated on October 14th, 2025 at 11:34am MDT